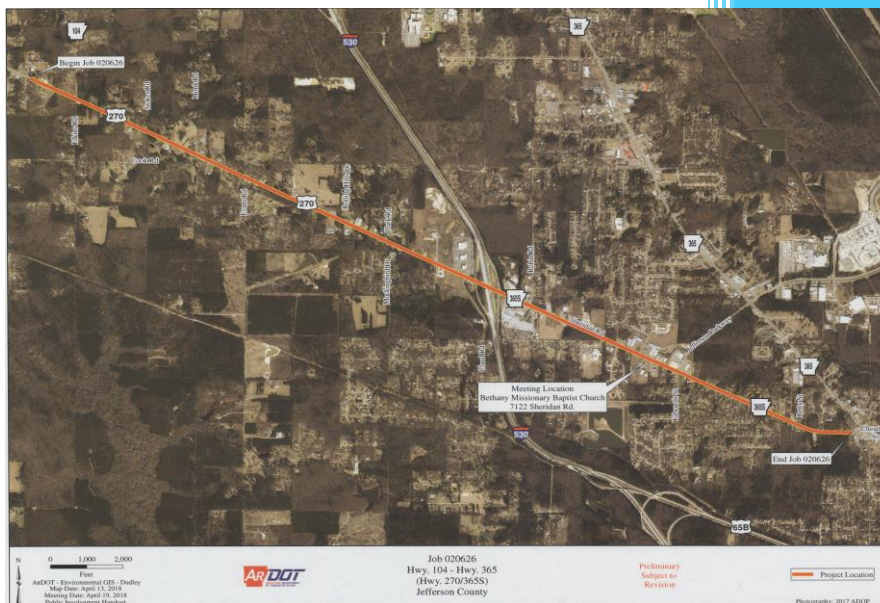


2021

Annual List of Obligated Projects (ALOP)



A summary of Federal transportation obligations in the Pine Bluff-White Hall Metropolitan Planning Area between October 1, 2020 and September 30, 2021

Pine Bluff-White Hall Metropolitan Planning Organization (MPO)
Southeast Arkansas Regional Planning
12/30/2021

FY 2021 ANNUAL LISTING OF FEDERALLY OBLIGATED PROJECTS

Prepared by:

The Pine Bluff – White Hall Metropolitan Planning Organization (MPO)
Southeast Arkansas Regional Planning Commission

Prepared in cooperation with:
The Cities of Pine Bluff and White Hall
Jefferson County
Pine Bluff Transit
Arkansas Department of Transportation (ArDOT)
Federal Highway Administration (FHWA)
Federal Transit Administration (FTA)

SOUTHEAST ARKANSAS REGIONAL PLANNING COMMISSION
AND
PINE BLUFF AREA TRANSPORTATION STUDY
(PBATS)

NOTICE OF NONDISCRIMINATION:

The Southeast Arkansas Regional Planning Commission (SARPC) serving as the Pine Bluff Metropolitan Planning Organization (MPO) complies with the Disabilities Act of 1990, Section 504 of the Rehabilitation Act of 1973, Title VI of the Civil Rights Act of 1964 all other federal equal opportunity laws and therefore does not discriminate on the basis of race, sex, color, age, national origin, religion, or disability in the admission or access to and treatment in SARPC and MPO programs and activities, as well as SARPC's hiring or employment practices. Complaints of any alleged discrimination and inquiries regarding SARPC's nondiscrimination policies may be directed to Larry Reynolds, Executive Director/MPO Study Director (ADA, 504, Title VI coordinator), 1300 Ohio, Suite B, Pine Bluff, AR 71601, telephone number (870) 534-4247 or the following email address: sarpc1@cabelynx.com.

This notice will be made available from the SARPC office in large print, on audiotape and in braille upon request. Free language assistance for Limited English Proficiency individuals is available upon request. For TTY assistance please call 870-461-0441.

The preparation and publication of this document was financed in part by funds provided by the United States Department of Transportation, Federal Highway Administration, Federal Transit Administration. The provisions of Federal financial assistance should not be construed as denoting U.S. Governmental approval of plans, policies, programs or projects contained herein.

FY 2020 ANNUAL LISTING OF FEDERALLY OBLIGATED PROJECTS

Table of Contents

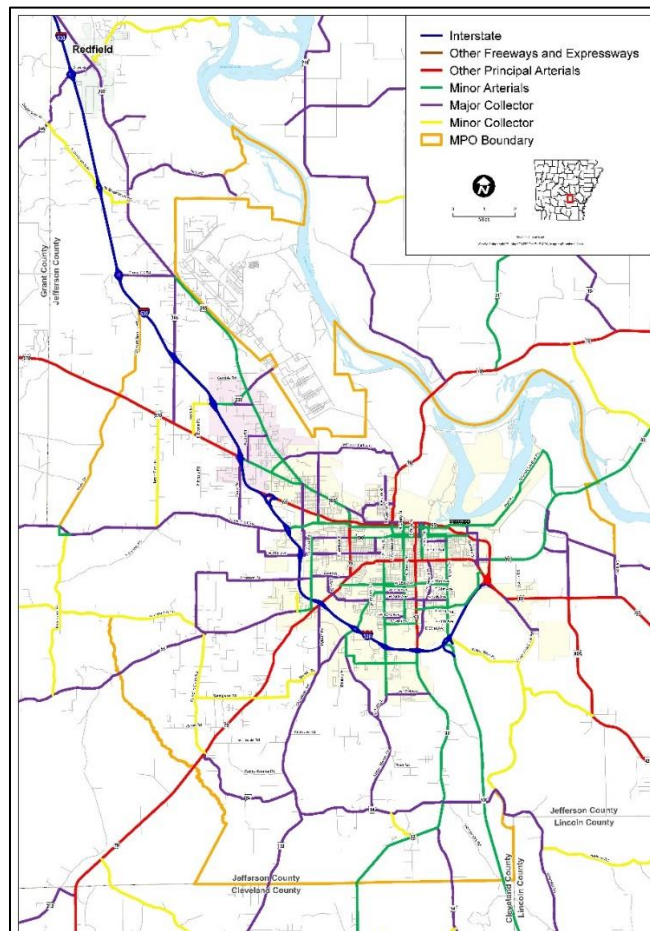
Acronyms	1
What is the Pine Bluff – White Hall Metropolitan Planning Organization	2
Report Objective	3
Summary of Federal Transportation Obligations in FY 2021	3
Listing of Federal Highway Administration Obligated Projects FFY 2021	4
Listing of Federal Transit Administration Obligated Projects FFY 2021	5
Graphical Representations	6
Appendix A: 2021-2024 TIP Project Status	8

ACRONYMS

ALOP	Annual Listing of Federally Obligated Projects
ArDOT	Arkansas Department of Transportation
CFR	Code of Federal Regulations
Const	Construction
FHWA	Federal Highway Administration
FTA	Federal Transit Administration
FY	Fiscal Year (July 1 – June 30)
FFY	Federal Fiscal Year (October 1 – September 30)
MPO	Metropolitan Planning Organization
NHPP	National Highway Performance Program
PBATS	Pine Bluff Area Transportation Study
PBT	Pine Bluff Transit
PE	Preliminary Engineering
RTP	Recreational Trails Program
SEARPC	Southeast Arkansas Regional Planning Commission
SEAT	Southeast Arkansas Transportation
STIP	State Transportation Improvement Program
STP	Surface Transportation Program
TAP	Transportation Alternatives Program
TIP	Transportation Improvement Program
U.S.C.	United States Code

What is the Pine Bluff – White Hall Metropolitan Planning Organization

In 1974, SARPC was designated by the Governor as the Metropolitan Planning Organization (MPO) for transportation planning for the Pine Bluff Metropolitan Statistical Area. The formal name of the transportation planning program is the Pine Bluff Area Transportation Study (PBATS). The PBATS program was established in accordance with the Federal Highway Act of 1962, which required urban areas of more than 50,000 populations to create and maintain a **continuing comprehensive** transportation planning process carried on **cooperatively** by state and local communities in order to meet the transportation needs of public while complying with local, state, and federal rules and guidelines. The PBATS area encompasses the cities of Pine Bluff, White Hall, and portions of the unincorporated areas of Jefferson County that make up the Metropolitan Urbanized area as defined by the U.S. Census.



Report Objective

This report identifies projects in the Pine Bluff – White Hall Metropolitan Planning Area for which Federal funds were obligated between October 1, 2020 and September 30, 2021 (2021 Federal Fiscal Year). Obligation of funds reflects the Federal government’s commitment to pay or reimburse the State of Arkansas and/or local entities for the federal share of a project’s eligible costs. Obligation of funds does not necessarily imply that work on a project began in the year of obligation. Additionally, the amount of Federal funds obligated may not be equal to the total cost of a project, which may also include commitments from the State of Arkansas and local entities.

This report is published pursuant to 23 U.S.C. Section 134, 49 U.S.C. Section 5304, 23 CFR Section 450 and 49 CFR Section 613, which require the preparation of an annual list of projects for which Federal funds were obligated in the previous federal fiscal year. The list of FHWA obligated projects includes highway projects described by location, phase and the amount of Federal funds obligated; and the list of FTA obligated projects includes transit projects described by recipient, the type of assistance received, and the amount of Federal funds obligated.

Transportation projects undertaken without the use of federal funds are not identified in either list.

Summary of Federal Transportation Obligations in FY 2021

As indicated in Table 1, between October 1, 2020 and September 30, 2021, the Federal government obligated approximately \$ 89,946,032 for highway projects within the Pine Bluff – White Hall MPO area. Transportation Alternative Program funding received \$ 500,000 for the Pine Bluff Streetscape Project . The remaining amount went toward engineering, consulting and utility relocation on other listed projects as shown in the table.

Table 2 shows Federal obligation to local transit operations for FFY 2021. Total obligations for the Pine Bluff – White Hall MPO area amounted to \$ 2,687,431. This total represents an investment in capital equipment purchases of \$ 1,118,431 with the remaining portion of \$ 1,569,000 allocated to transit operations, maintenance, and paratransit service.

Listing of Federal Highway Administration Obligated Projects FFY 2021

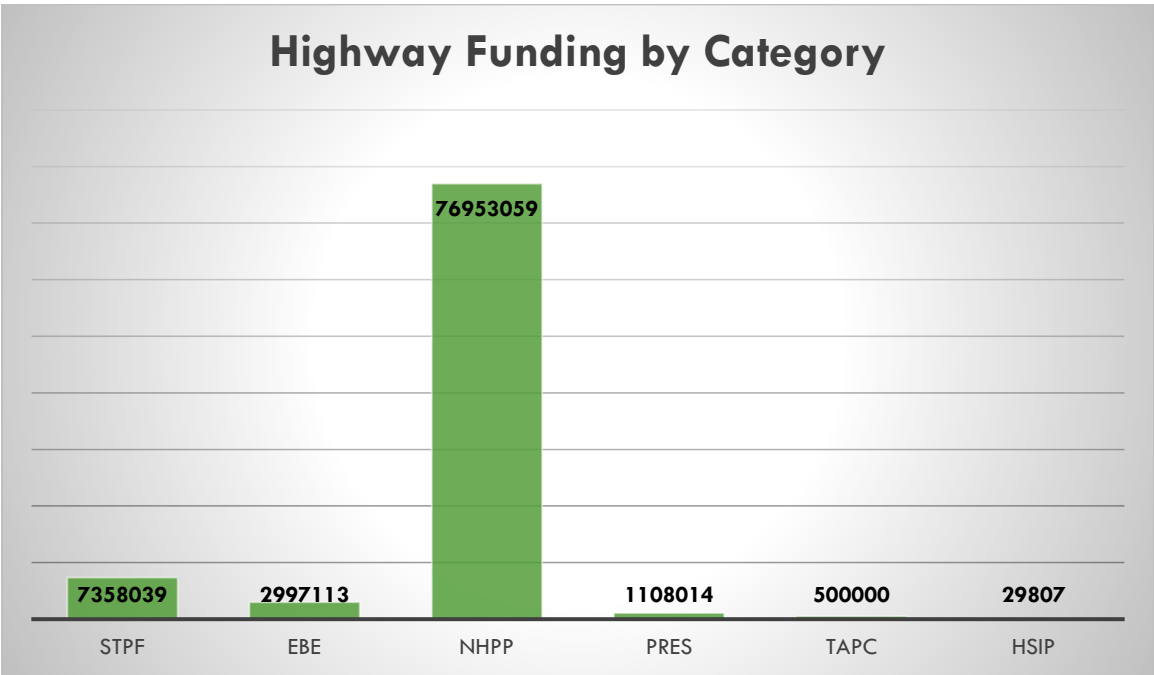
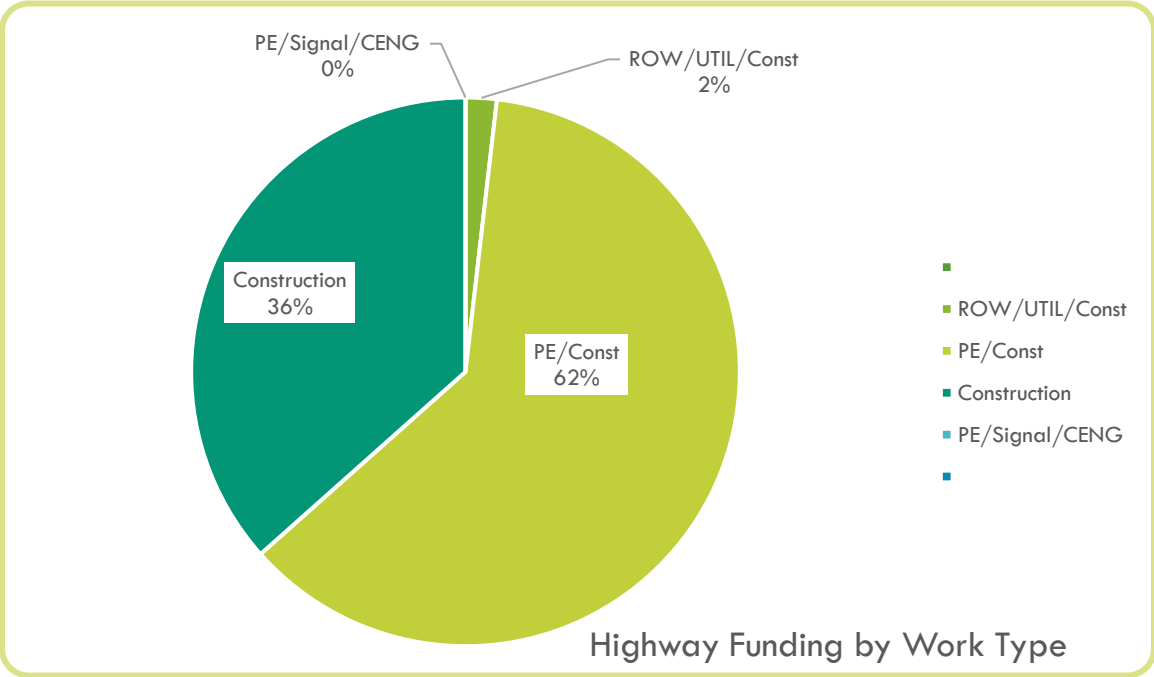
JOB #	OBLIGATED UNDER STIP JOB #	COUNTY	ROUTE	JOB NAME OR TERMINI	LENGTH (MILES)	TYPE OF WORK	TYPE OF FEDERAL FUNDING	FEDERAL FUNDS IN TIP/STIP	FEDERAL FUNDS PREVIOUSLY OBLIGATED	FEDERAL FUNDS OBLIGATED (DEOBLIGATED) IN FFY 2021	TOTAL FEDERAL FUNDS OBLIGATED	FEDERAL FUNDS REMAINING TO BE OBLIGATED	AGENCY RESPONSIBLE FOR PROVIDING MATCHING FUNDS	MPO AREA	DOES PROJECT INCLUDE BICYCLE OR PEDESTRIAN FACILITIES?
012359	XX2021-16	Craighead, Dallas, Grant, Jefferson	18, 63, 167	Hwys. 18, 63 & 167 (SEL. SECS.) (S)	34.755	CONST	STPF		0.00	3,667,047.97	3,667,047.97		State	PBATS, JATS	
020070	02X0070	Jefferson	79	Hwy. 65B-North (Hwy. 79B) Major widening	1.616	CONST	EBE		3,069,929.00	-72,816.00	2,997,113.00		State	PBATS	
020608	XX2018-08	Jefferson		UAPB Pedestrian Crossing (TAP-15) (S)		CONST	TAPF	383,186.00	383,186.00	-383,186.00	0.00		UAPB	PBATS	Yes
020615	XX2021-10	Jefferson	79	Pine Bluff - South	2.363	PE	NHPP		153,323.00	0.20	153,323.20		State	PBATS	
020624	02X014	Jefferson, Lincoln	65	Hwy. 425 - Grady (Sel. Secs.) (S)	29.315	CONST	NHPP		5,112,051.00	-403,303.00	4,708,748.00		State	PBATS	
020628	XX2021-10	Jefferson	270, 365	Hwy. 104 - Hwy. 365 (S)	4.562	PEUTIL	NHPP		362,258.00	159,999.60	522,257.60		State	PBATS	
020628	XX2021-10	Jefferson	270, 365	Hwy. 104 - Hwy. 365 (S)	4.562	ROW/UTIL	RPE		0.00	1,108,014.00	1,108,014.00		State	PBATS	
020647	02X037	Jefferson	65	Bryant St. - Convention Center Dr. (Pine Bluff)	6.49	CONST	NHPP		4,462,185.00	-48,817.00	4,433,368.00		State	PBATS	
020660	02X053	Grant, Jefferson	365	Pulaski Co. Line - Pine Bluff (Sel. Secs.) (S)	19.24	CONST	STPF		3,696,891.00	-5,899.74	3,690,991.26		State	PBATS	
020701	XX2021-16	Jefferson	79	Couch Ln. - Burnett St. (Pine Bluff) (S)	0.74	CONST	NHPP		0.00	1,337,970.90	1,337,970.90		State	PBATS	
020705	XX2021-06	Jefferson		Pine Bluff Downtown Streetscape Ph. 3 (TAP-18) (S)		CONST	TAPC	500,000.00	0.00	500,000.00	500,000.00		City	PBATS	Yes
BB0202	XX2021-01	Jefferson	I-530	Hwy. 104 - Hwy. 65B (I-530)	10.071	CONST	NHPP		450,000.00	10,710,091.91	11,160,091.91		State	PBATS	
BB0203	BB0203	Jefferson	I-530	Hwy. 65B-Hwy. 65	22.642	PE/CONST	NHPP		49,615,209.00	5,022,090.03	54,637,299.03		State	PBATS	
BB0203	BB0203	Jefferson	I-530	Hwy. 65B-Hwy. 65	22.642	CONST	HSIP		9,000.00	20,807.21	29,807.21		State	PBATS	

Note: STIP item numbers beginning with "XX" are generic references that fund multiple projects in the STIP.

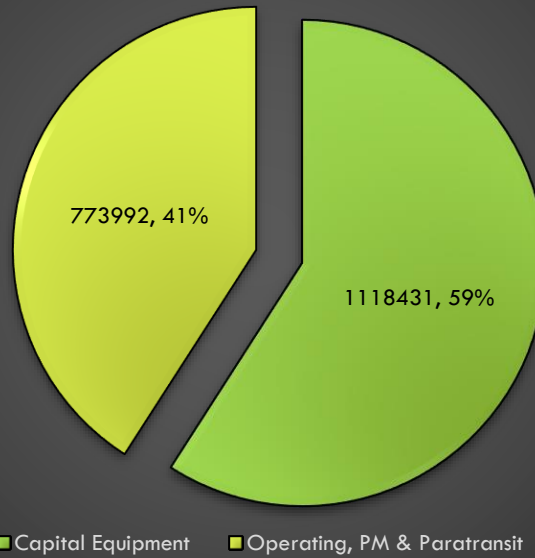
Listing of Federal Transit Administration Obligated Projects FFY 2021

JOB / ITEM # PBT001-007 Urbanized Area Formula Funds (Section 5307)	MPO Area	Subrecipient	City	Project Description	FTA FAIN Number	FTA PO Number	Total Cost	Federal / State Amount	Local Match
	Pine Bluff MPO	Pine Bluff Transit	Pine Bluff	Operating Assistance	AR-2022-001-00		\$840,000	\$440,000	\$440,000
	Pine Bluff MPO	Pine Bluff Transit	Pine Bluff	Preventative Maintenance	AR-2022-001-00		\$263,000	\$210,000	\$53,000
	Pine Bluff MPO	Pine Bluff Transit	Pine Bluff	Paratransit Service	AR-2022-001-00		\$156,000	\$125,000	\$31,000
	Pine Bluff MPO	Pine Bluff Transit	Pine Bluff	Capital - Rolling Stock/Support Equipment	AR-2022-001-00		\$126,000	\$101,000	\$25,000
	Pine Bluff MPO	Pine Bluff Transit	Pine Bluff	Capital Planning	AR-2022-001-00		\$26,000	\$21,000	\$5,000
	Pine Bluff MPO	Pine Bluff Transit	Pine Bluff	Consolidated Planning Grant (MPO)	AR-2020-017	890	\$134,000	\$107,000	\$27,000
	Pine Bluff MPO	Pine Bluff Transit	Pine Bluff	Capital - Rolling Stock - Conway Funds	AR-2020-003-01		\$175,000	\$145,000	\$30,000
JOB / ITEM # 110FTA Seniors and Individuals with Disabilities (Section 5310)	MPO Area	Subrecipient	City	Project Description	FTA FAIN Number	FTA PO Number	Total Cost	Federal / State Amount	Local Match
JOB / ITEM # 111FTA Rural Areas (Section 5311)	MPO Area	Subrecipient	City	Project Description	FTA FAIN Number	FTA PO Number	Total Cost	Federal / State Amount	Local Match
	Pine Bluff MPO	Southeast Arkansas Transportation(SEAT)	Pine Bluff	Preventative Maintenance	AR-2020-014-00	AR-18-X03	\$150,000	\$150,000	\$0
	Pine Bluff MPO	Southeast Arkansas Transportation(SEAT)	Pine Bluff	Auto Scanner & Fuel Mgmt System	AR-2020-014-00	AR-18-X03	\$15,000	\$15,000	\$0
	Pine Bluff MPO	Southeast Arkansas Transportation(SEAT)	Pine Bluff	Server & Desktop Computers	AR-2020-014-00	AR-18-X03	\$29,755	\$29,755	\$0
	Pine Bluff MPO	Southeast Arkansas Transportation(SEAT)	Pine Bluff	Angel Trax Cameras (13)	AR-2020-014-00	AR-18-X03	\$22,100	\$22,100	\$0
	Pine Bluff MPO	Southeast Arkansas Transportation(SEAT)	Pine Bluff	Generator (1)	AR-2020-014-00	AR-18-X03	\$7,145	\$7,145	\$0
	Pine Bluff MPO	Southeast Arkansas Transportation(SEAT)	Pine Bluff	#08 22' Ford Transit Conversion High-Roof Extended Van w/Rear Lift (7-Pass. or 1/2 WC)	AR-2020-014-00	AR-18-X03	\$55,237	\$55,237	\$0
	Pine Bluff MPO	Southeast Arkansas Transportation(SEAT)	Pine Bluff	#08 22' Ford Transit Conversion High-Roof Extended Van w/Rear Lift (7-Pass. or 1/2 WC)	AR-2020-014-00	AR-18-X03	\$55,237	\$55,237	\$0
	Pine Bluff MPO	Southeast Arkansas Transportation(SEAT)	Pine Bluff	#08 22' Ford Transit Conversion High-Roof Extended Van w/Rear Lift (7-Pass. or 1/2 WC)	AR-2020-014-00	AR-18-X03	\$55,237	\$55,237	\$0
	Pine Bluff MPO	Southeast Arkansas Transportation(SEAT)	Pine Bluff	#08 22' Ford Transit Conversion High-Roof Extended Van w/Rear Lift (7-Pass. or 1/2 WC)	AR-2020-014-00	AR-18-X03	\$55,237	\$55,237	\$0
	Pine Bluff MPO	Southeast Arkansas Transportation(SEAT)	Pine Bluff	#08 22' Ford Transit Conversion High-Roof Extended Van w/Rear Lift (7-Pass. or 1/2 WC)	AR-2020-014-00	AR-18-X03	\$55,237	\$55,237	\$0
	Pine Bluff MPO	Southeast Arkansas Transportation(SEAT)	Pine Bluff	#08 22' Ford Transit Conversion High-Roof Extended Van w/Rear Lift (7-Pass. or 1/2 WC)	AR-2020-014-00	AR-18-X03	\$55,237	\$55,237	\$0
	Pine Bluff MPO	Southeast Arkansas Transportation(SEAT)	Pine Bluff	#16 23' Ford Medium Cutaway Bus w/Lift (13/2 wc)	AR-2020-014-00	AR-18-X03	\$59,462	\$59,462	\$0
	Pine Bluff MPO	Southeast Arkansas Transportation(SEAT)	Pine Bluff	#09 22' Ford Transit Conversion High Roof Extended Van w/Rear Lift (4/2 wc)	AR-2020-014-00	AR-18-X03	\$59,462	\$59,462	\$0
	Pine Bluff MPO	Southeast Arkansas Transportation(SEAT)	Pine Bluff	#09 22' Ford Transit Conversion High Roof Extended Van w/Rear Lift (4/2 wc)	AR-2020-014-00	AR-18-X03	\$59,462	\$59,462	\$0
	Pine Bluff MPO	Southeast Arkansas Transportation(SEAT)	Pine Bluff	#09 22' Ford Transit Conversion High Roof Extended Van w/Rear Lift (4/2 wc)	AR-2020-014-00	AR-18-X03	\$59,462	\$59,462	\$0
	Pine Bluff MPO	Southeast Arkansas Transportation(SEAT)	Pine Bluff	#09 22' Ford Transit Conversion High Roof Extended Van w/Rear Lift (4/2 wc)	AR-2020-014-00	AR-18-X03	\$59,462	\$59,462	\$0
	Pine Bluff MPO	Southeast Arkansas Transportation(SEAT)	Pine Bluff	#09 22' Ford Transit Conversion High Roof Extended Van w/Rear Lift (4/2 wc)	AR-2020-014-00	AR-18-X03	\$59,462	\$59,462	\$0
	Pine Bluff MPO	Southeast Arkansas Transportation(SEAT)	Pine Bluff	#09 22' Ford Transit Conversion High Roof Extended Van w/Rear Lift (4/2 wc)	AR-2020-014-00	AR-18-X03	\$59,462	\$59,462	\$0
JOB / ITEM # 114FTA Bus & Bus Facilities (Section 5339 - Rural)	MPO Area	Subrecipient	City	Project Description	FTA FAIN Number	FTA PO Number	Total Cost	Federal / State Amount	Local Match
JOB / ITEM # 201TLS Translease / Insurance	MPO Area	Subrecipient	City	Project Description	State Award	State Job Number	Total Cost	Federal / State Amount	Local Match

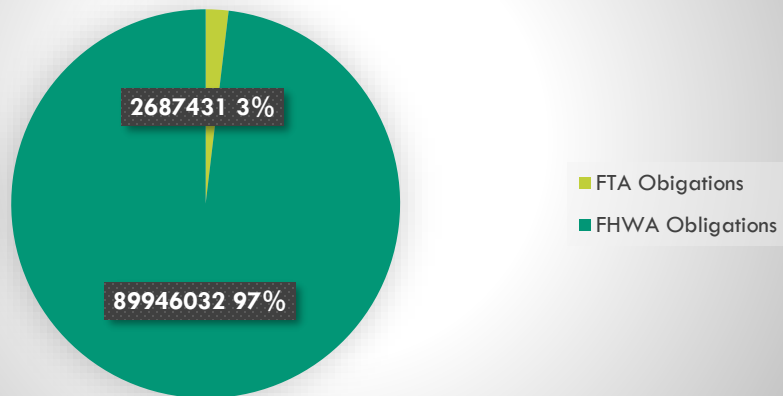
Graphical Representations



FTA Funding Obligations FFY 2021



Federal Transportation Funding Obligations FFY 2021



APPENIX A: 2021-2024 TIP/STIP PROJECT STATUS

FY 2021-2024 Transportation Improvement Program (TIP) Project Status				
Job #	County	Route	Name	Status
020751	Jefferson	54	Hwy 79 – Nevins Creek	Scheduled 2024
A20012	Jefferson	463	Harding Ave. – I-530	Scheduled 2-2022
020702	Jefferson	63 & 65B	I-53- to I-530	Scheduled 2022
020716	Jefferson	65	I-530 – Hwy 425 (Minor Widening)	Scheduled 4-2023
020615	Jefferson	79	Pine Bluff South	Scheduled 11-2022
020701	Jefferson	79 & 79B	Couch Ln – Burnett St	Sub-completed 10-2021
020588	Jefferson	190	11th Ave.- Harding Ave	Scheduled 4-2022
020628	Jefferson	190	I-530 -Hwy 79B (Franklin & 6th)	Scheduled 9-2022
02X119	Jefferson	256	I-530 - Baldwin Rd (White Hall)	Scheduled 2023
020748	Grant & Jefferson	270	Hurricane Creek – Hwy 104 (Sel. Secs.)	Scheduled 2024
020626	Jefferson	270 / 365 Spur	Hwy 104 – Hwy 365	Scheduled 8-2022
020661	Jefferson	I-530	I-530 Access Improvement	Scheduled 2022
012359*	Jefferson	63	Hwys. 18, 63, & 167 (Sel. Sec.)	Sub-completed 10-2021
020721	Jefferson	90	Pine Bluff Grant St Multi-use Trail	Programmed
R20078	Jefferson	79	Hwy 79 – Pine Bluff City Limits Pine Bluff Downtown Streetscape	Programmed
020705	Jefferson		Phase 3 (TAP)	Programmed

- Indicates projects had multiple locations with portions in Jefferson County