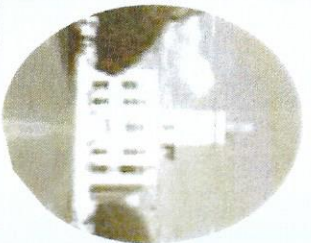


# City of Pine Bluff Downtown Main Street Master Plan and Design Guidelines

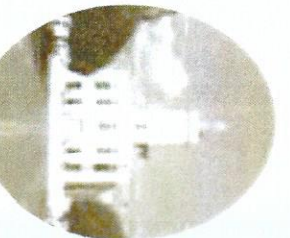
McClelland Consulting Engineers - Ritchie Smith Associates - Landscape Architecture Inc. - Reed Architectural Firm



## Streetscape Design Guidelines:

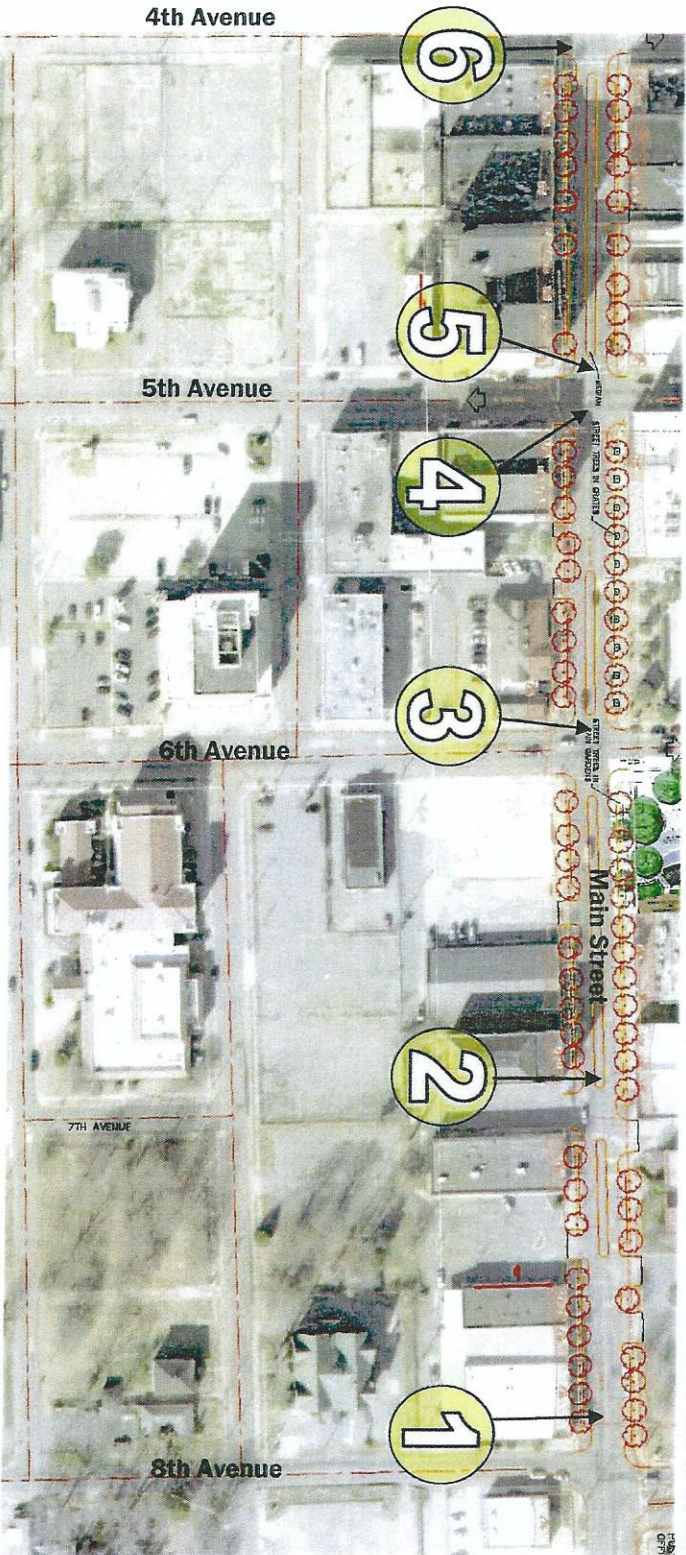
- Existing Streetscape
- Sidewalk Zone
- Sidewalk Paving
- Planting Infrastructure
- Plant Material
- Lighting & Electrical
- Site Furnishing & Amenities
- Environmental Graphics
- Street Design
- Parking Lot Enhancement
- Vacant Lot Enhancement
- Project Team





# City of Pine Bluff Downtown Main Street Master Plan and Design Guidelines

McLelland Consulting Engineers - Richie Smith Associates - Landscape Architecture Inc. - Reed Architectural Firm

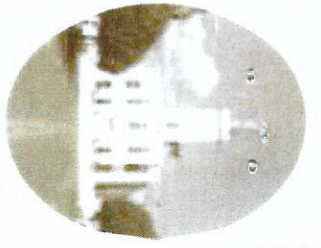


NUMBERS ARE REFERENCE KEYS OF THE LOCATIONS FOR THE PICTURES OF "EXISTING STREETSCAPE". (REFER TO PAGES 4 - 9)

THE STREETSCAPE GUIDELINES PROVIDE VARIOUS DESIGN ELEMENTS THAT CAN BE CONSIDERED FOR THE TWELVE BLOCK PROJECT AREA SHOWN ABOVE.

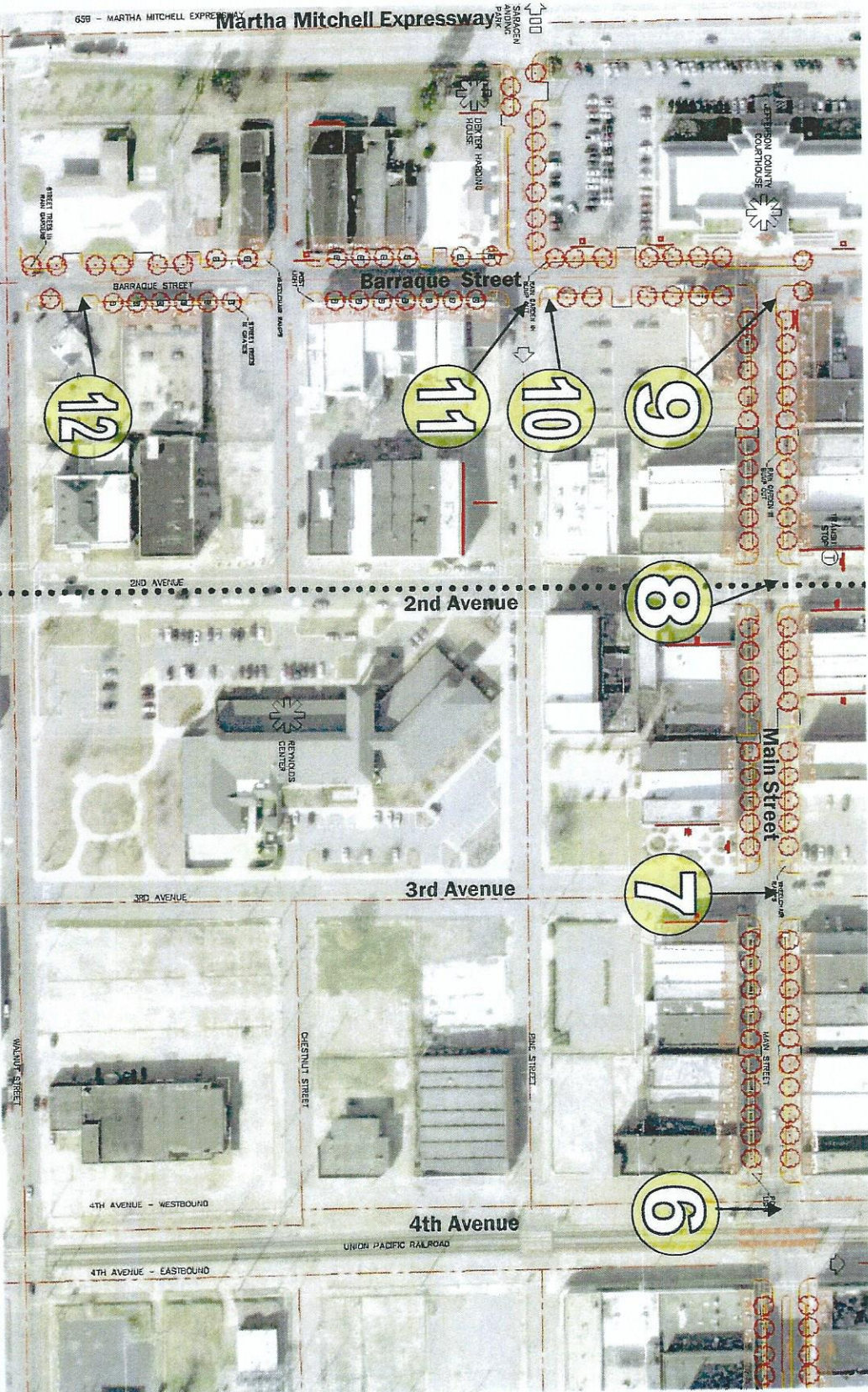
## Streetscape Design Guidelines:

- Existing Streetscape
- Sidewalk Zone
- Sidewalk Paving
- Planting Infrastructure
- Plant Material
- Lighting & Electrical
- Site Furnishing & Amenities
- Environmental Graphics
- Street Design
- Parking Lot Enhancement
- Vacant Lot Enhancement
- Project Team

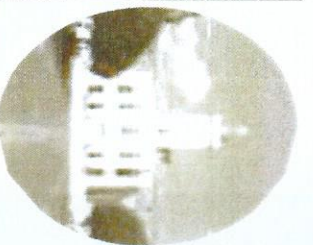


**Streetscape Design Guidelines:**

- Existing Streetscape
- Sidewalk Zone
- Sidewalk Paving
- Planting Infrastructure
- Plant Material
- Lighting & Electrical
- Site Furnishing & Amenities
- Environmental Graphics
- Street Design
- Parking Lot Enhancement
- Vacant Lot Enhancement
- Project Team

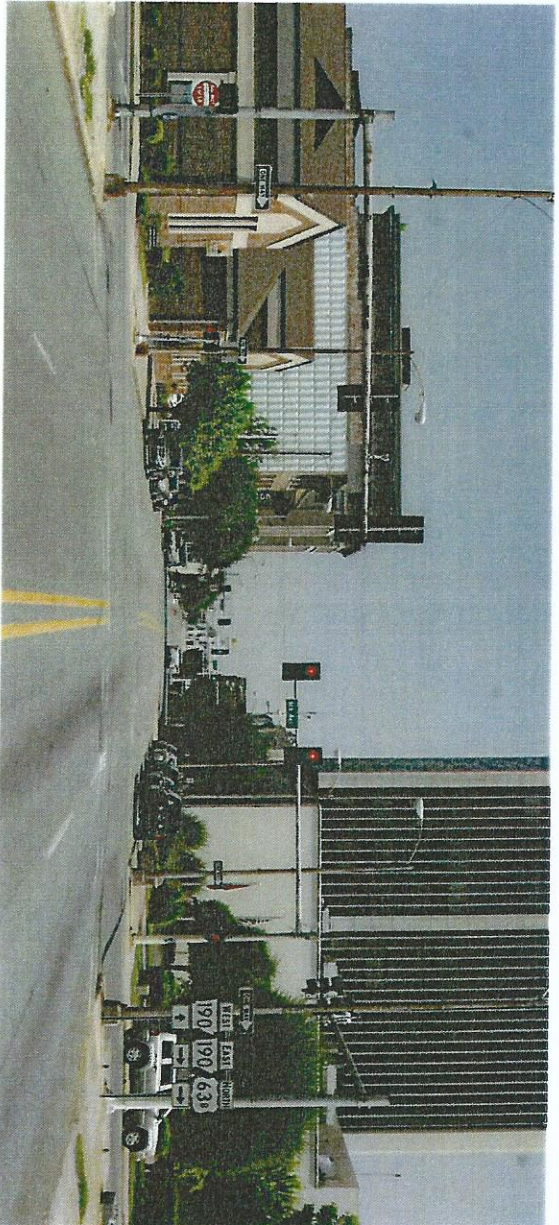


# EXISTING STREETSCAPE



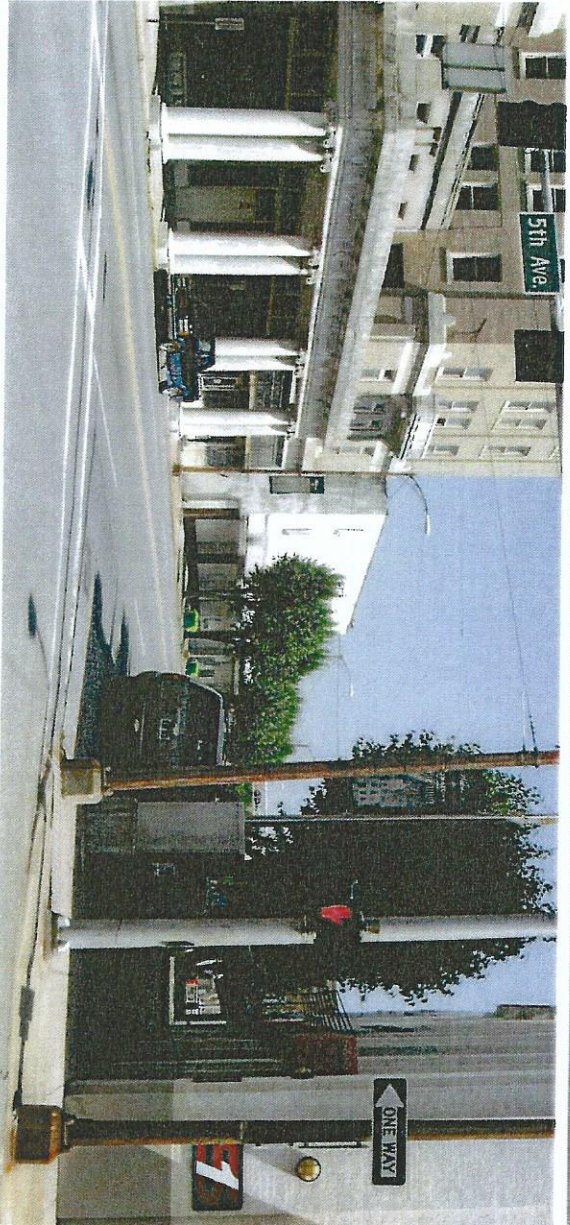
## Intersection of South Main Street and 6th Avenue

3

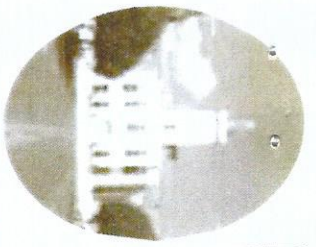


## Intersection of South Main Street and 5th Avenue

4



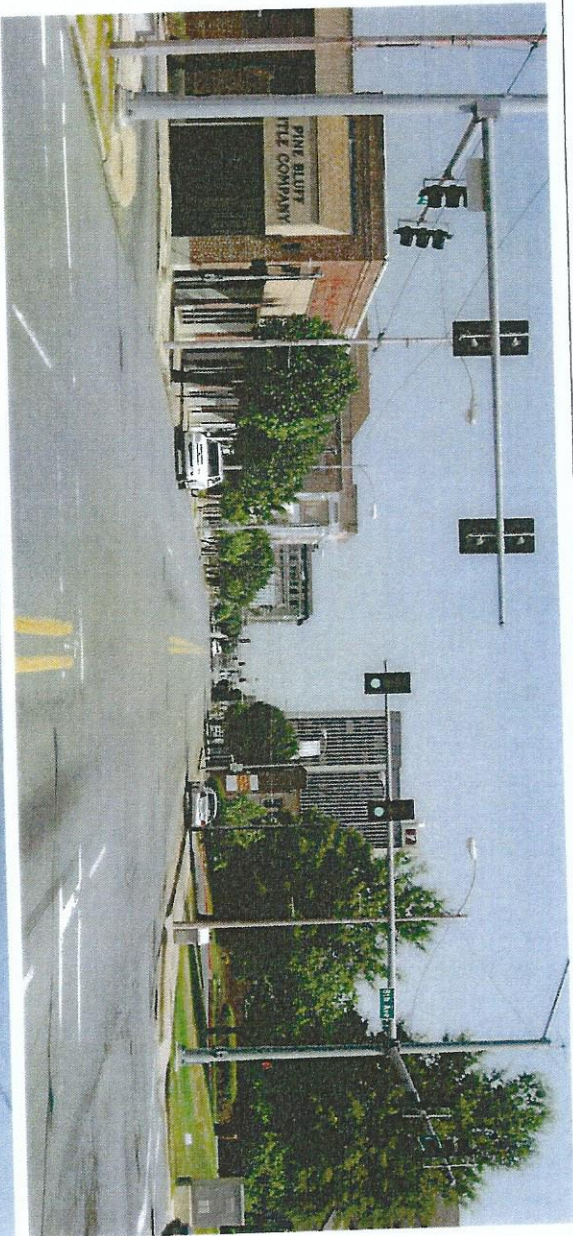
- Streetscape  
Design Guidelines:**
- Existing Streetscape
  - Sidewalk Zone
  - Sidewalk Paving
  - Planting  
Infrastructure
  - Plant Material
  - Lighting & Electrical
  - Site Furnishing &  
Amenities
  - Environmental  
Graphics
  - Street Design
  - Parking Lot  
Enhancement
  - Vacant Lot  
Enhancement
  - Project Team



# EXISTING STREETSCAPE

## Streetscape Design Guidelines:

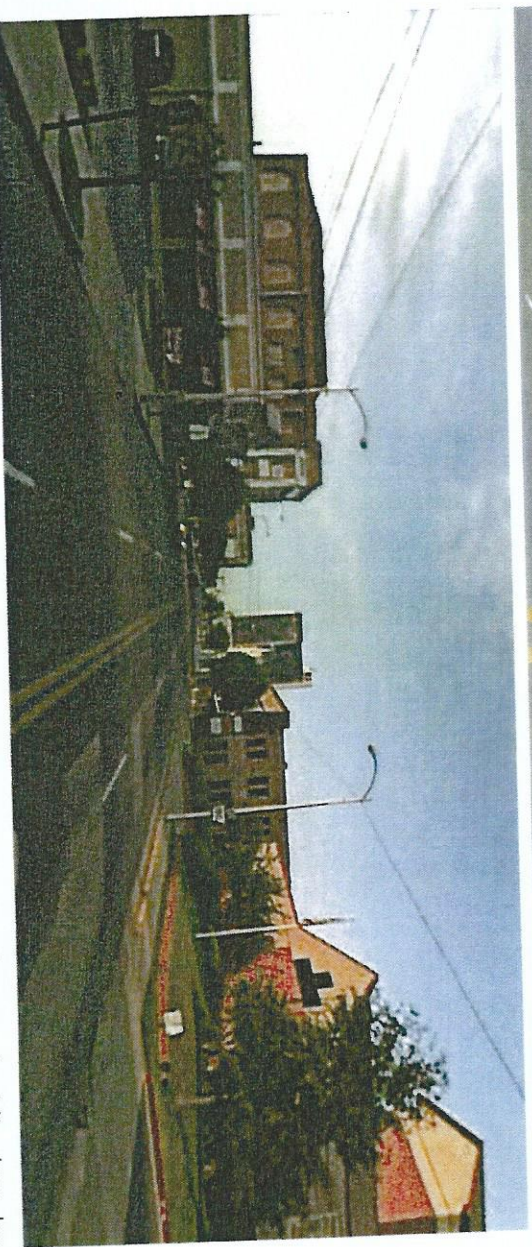
- Existing Streetscape
- Sidewalk Zone
- Sidewalk Paving
- Planting Infrastructure
- Plant Material
- Lighting & Electrical
- Site Furnishing & Amenities
- Environmental Graphics
- Street Design
- Parking Lot Enhancement
- Vacant Lot Enhancement
- Project Team



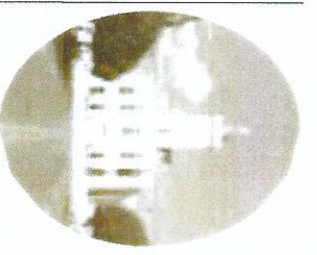
Intersection of South Main Street and 8th Avenue



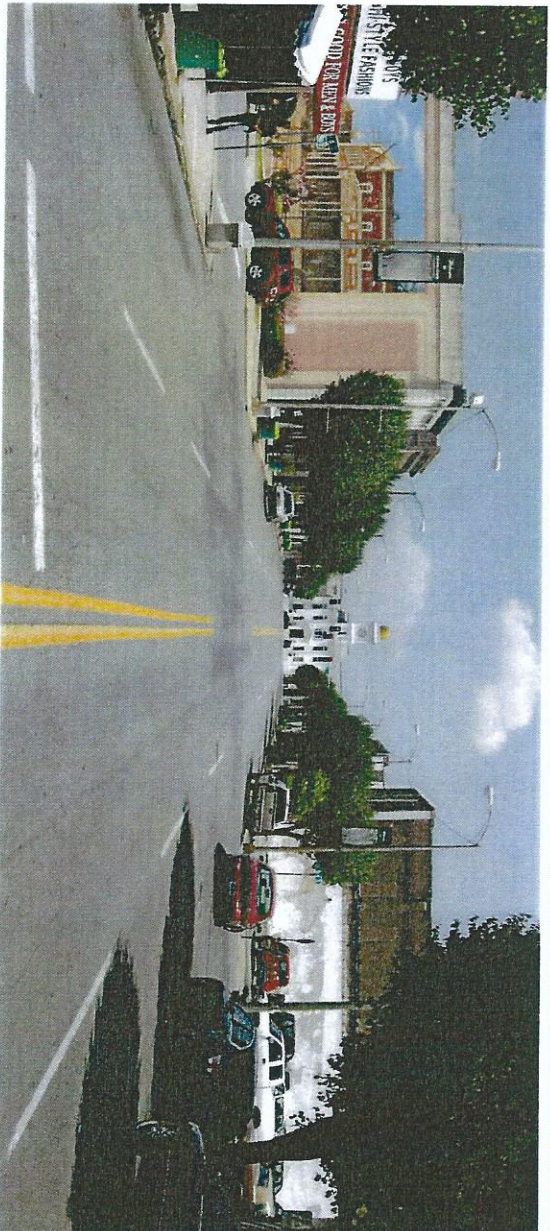
7th block of South Main Street



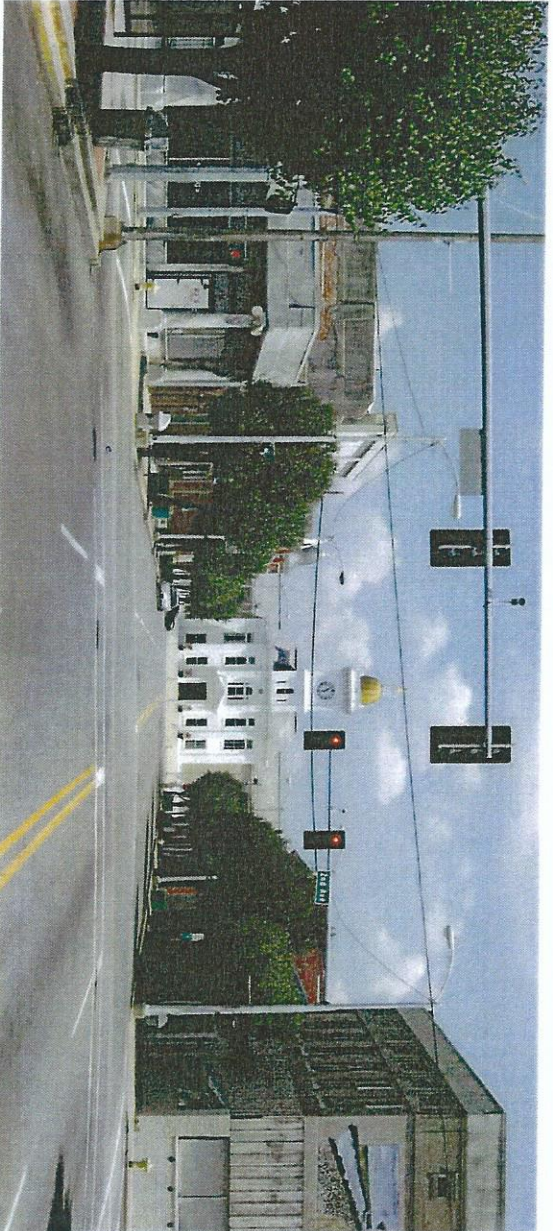
# EXISTING STREETSCAPE



## Intersection of South Main Street and 3rd Avenue

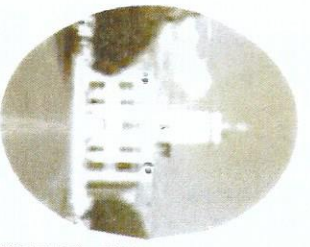


## Intersection of South Main Street and 2nd Avenue



### Streetscape Design Guidelines:

- Existing Streetscape
- Sidewalk Zone
- Sidewalk Paving
- Planting Infrastructure
- Plant Material
- Lighting & Electrical
- Site Furnishing & Amenities
- Environmental Graphics
- Street Design
- Parking Lot Enhancement
- Vacant Lot Enhancement
- Project Team



# EXISTING STREETSCAPE

## Streetscape

### Design Guidelines:

- Existing Streetscape
- Sidewalk Zone
- Sidewalk Paving
- Planting Infrastructure
- Plant Material
- Lighting & Electrical
- Site Furnishing & Amenities
- Environmental Graphics
- Street Design
- Parking Lot Enhancement
- Vacant Lot Enhancement
- Project Team



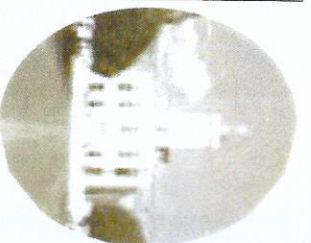
**Intersection of South Main Street and 5th Avenue**



**Intersection of South Main Street and 4th Avenue**

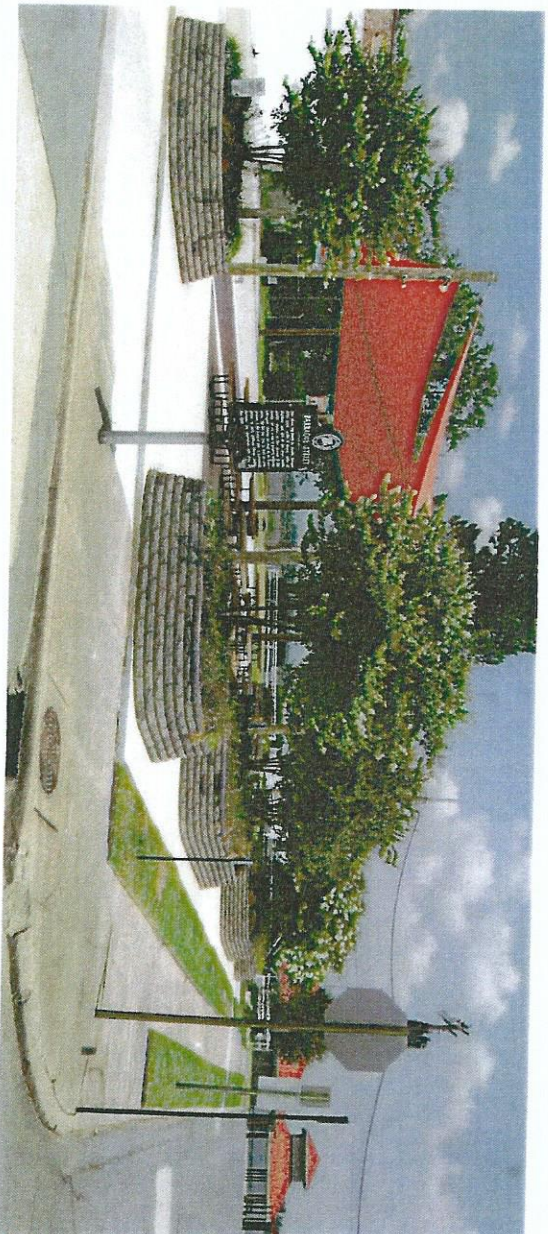


# EXISTING STREETSCAPE



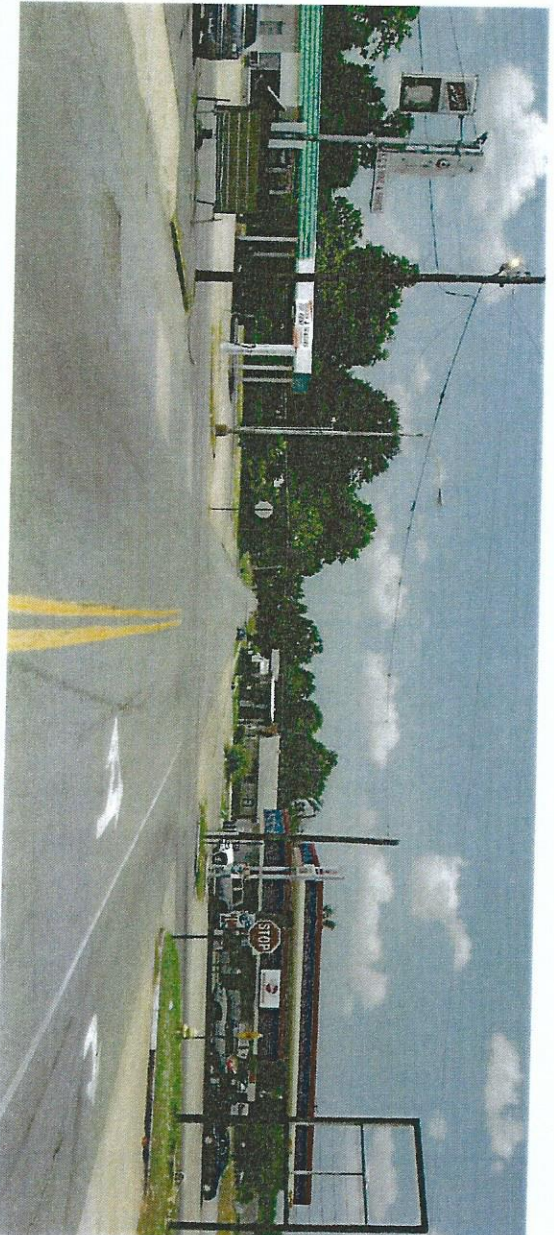
**Barraque Plaza at the corner of North Pine Street and West Barraque Street**

11



**Intersection of West Barraque Street and North Walnut Street**

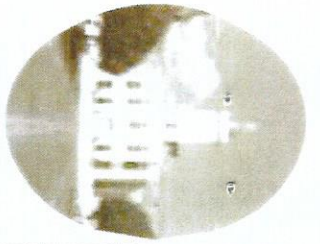
12



**Streetscape Design Guidelines:**

- Existing Streetscape
- Sidewalk Zone
- Sidewalk Paving
- Planting Infrastructure
- Plant Material
- Lighting & Electrical
- Site Furnishing & Amenities
- Environmental Graphics
- Street Design
- Parking Lot Enhancement
- Vacant Lot Enhancement
- Project Team

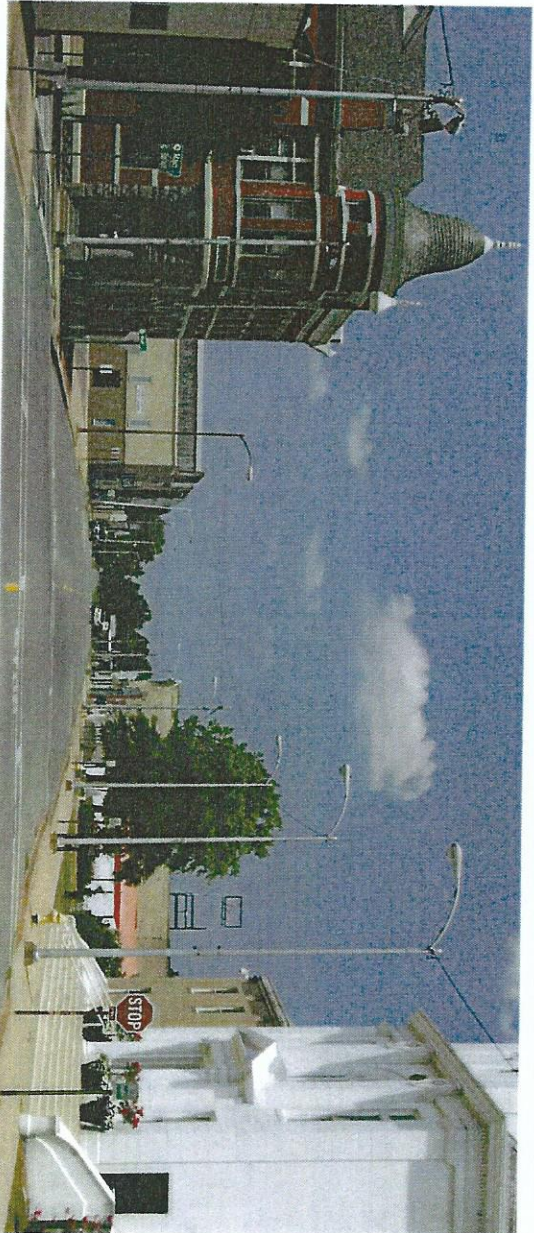




# EXISTING STREETSCAPE

## Streetscape Design Guidelines:

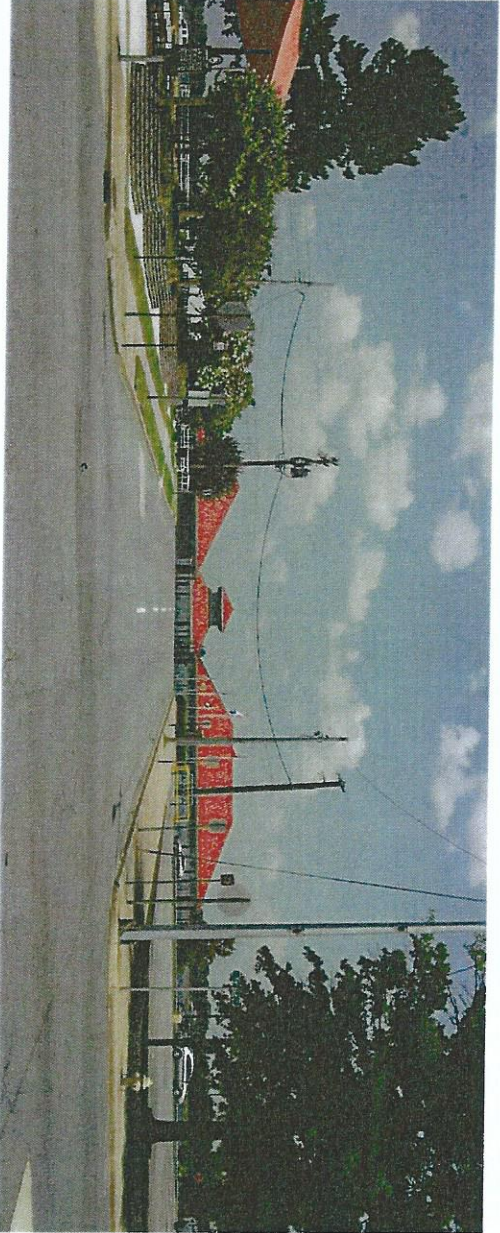
- Existing Streetscape
- Sidewalk Zone
- Sidewalk Paving
- Planting Infrastructure
- Plant Material
- Lighting & Electrical
- Site Furnishing & Amenities
- Environmental Graphics
- Street Design
- Parking Lot Enhancement
- Vacant Lot Enhancement
- Project Team

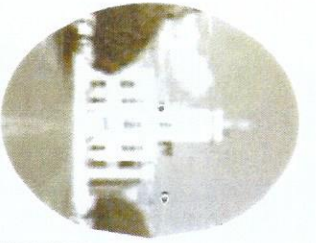


**Intersection of South Main Street and West Barraque Street**



**Intersection of West Barraque Street and North Pine Street**





# SIDEWALK PAVING

## Streetscape

### Design Guidelines:

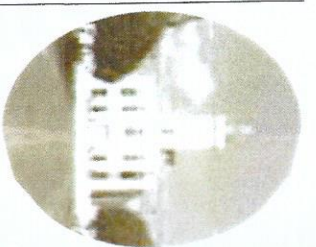
- Existing Streetscape
- Sidewalk Zone
- **Sidewalk Paving**
- Planting Infrastructure
- Plant Material
- Lighting & Electrical
- Site Furnishing & Amenities
- Environmental Graphics
- Street Design
- Parking Lot Enhancement
- Vacant Lot Enhancement
- Project Team

## amenity zone

- The amenity zone can include contrasting paving such as clay brick pavers.
- For rain gardens, the amenity zone is planted for groundwater recharge.
- Narrow paths provide a link between on-street parking and the sidewalk.

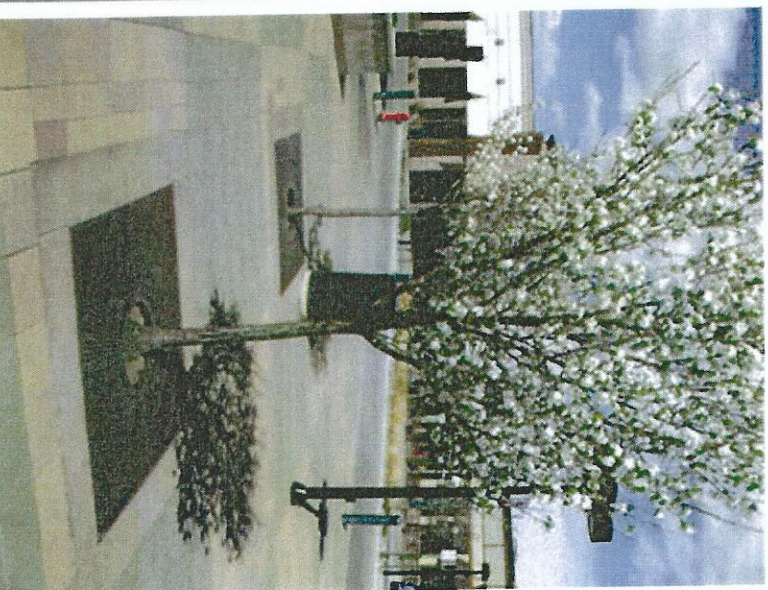


# PLANTING INFRASTRUCTURE



## tree grates

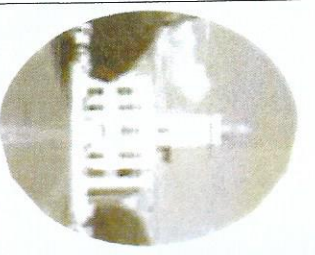
- In paved areas, tree grates are recommended for ease of maintenance and accessibility.
- Tree grates should be cast iron with black powdercoat finish, with a minimum 5' x 5' size.
- They should have an accessible design with maximum grate opening of 3/8"
- An expandable opening is necessary to accommodate the growth of the tree trunk.
- Up lighting is not recommended in the tree grates.



## Streetscape Design Guidelines:

- Existing Streetscape
- Sidewalk Zone
- Sidewalk Paving
- **Planting Infrastructure**
- Plant Material
- Lighting & Electrical
- Site Furnishing & Amenities
- Environmental Graphics
- Street Design
- Parking Lot Enhancement
- Vacant Lot Enhancement
- Project Team

# SIDEWALK PAVING



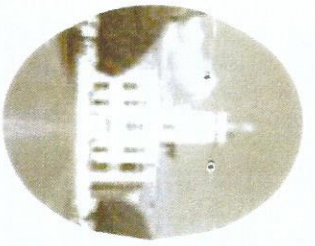
## walkway zone

- Broom finish concrete is recommended for the paving in the walkway zone.
- A scoring grid on a 4' or 5' module can be incorporated.



## Streetscape Design Guidelines:

- Existing Streetscape
- Sidewalk Zone
- Sidewalk Paving
- Planting Infrastructure
- Plant Material
- Lighting & Electrical
- Site Furnishing & Amenities
- Environmental Graphics
- Street Design
- Parking Lot Enhancement
- Vacant Lot Enhancement
- Project Team



# SIDEWALK ZONE

## Streetscape

### Design Guidelines:

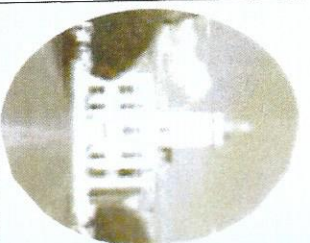
- Existing Streetscape
- **Sidewalk Zone**
- Sidewalk Paving
- Planting Infrastructure
- Plant Material
- Lighting & Electrical
- Site Furnishing & Amenities
- Environmental Graphics
- Street Design
- Parking Lot Enhancement
- Vacant Lot Enhancement
- Project Team

### store front zone

- The store front zone is a narrow zone along storefronts for cafe seating and outdoor display of merchandise.
- A 4'-6" width, with optional protective railing is recommended.
- Many Pine Bluff sidewalks are too narrow to accommodate a storefront zone.



# SIDEWALK ZONE



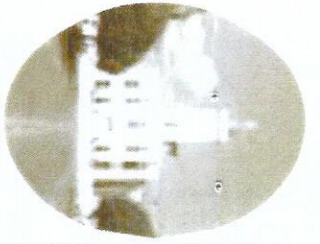
## Streetscape

### Design Guidelines:

- The walkway zone is located between the storefronts and amenity zone.
- A 10'-12' wide walkway zone is recommended, with a minimum width of 8'.



- Sidewalk Paving
- Planting Infrastructure
- Plant Material
- Lighting & Electrical
- Site Furnishing & Amenities
- Environmental Graphics
- Street Design
- Parking Lot Enhancement
- Vacant Lot Enhancement
- Project Team



# SIDEWALK ZONE

## Streetscape

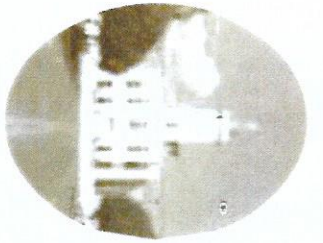
### Design Guidelines:

- Existing Streetscape
- **Sidewalk Zone**
- Sidewalk Paving
- Planting Infrastructure
- Plant Material
- Lighting & Electrical
- Site Furnishing & Amenities
- Environmental Graphics
- Street Design
- Parking Lot Enhancement
- Vacant Lot Enhancement
- Project Team

## amenity zone

- The amenity zone is located between the walkway zone and street curb.
- Trees, lights, site furniture, signage and other amenities are included.
- The amenity zone can be paved or contain a combination of rain garden plantings and paving.





# PLANTING INFRASTRUCTURE

## Streetscape

### Design Guidelines:

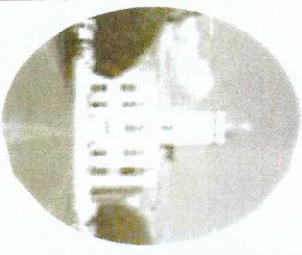
- Existing Streetscape
- Sidewalk Zone
- Sidewalk Paving
- **Planting Infrastructure**
  - Plant Material
  - Lighting & Electrical
  - Site Furnishing & Amenities
  - Environmental Graphics
  - Street Design
  - Parking Lot Enhancement
  - Vacant Lot Enhancement
  - Project Team

## tree planters

- Tree planters are generally not recommended in the 12 block project area. They may be appropriate in lower traffic areas or urban transition zones – where a grass verge (tree lawn) may also be appropriate.
- Tree planters are defined and protected by raised concrete curb edges (4" height x 8" wide).
- Tree planters should be a 5' x 10' size or larger.
- These areas are planted with low maintenance ground cover, ornamental grasses and trees.







# PLANT MATERIAL

## street trees

- Street trees should be deciduous canopy trees, which have a high branching structure and/or compact crowns
- Species should be adaptive to urban conditions.
- Below are options for street trees, where columnnar trees are desired:

Musashino Zelkova



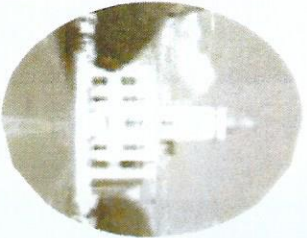
Everclear Allee Elm



### Streetscape

#### Design Guidelines:

- Existing Streetscape
- Sidewalk Zone
- Sidewalk Paving
- Planting Infrastructure
- **Plant Material**
- Lighting & Electrical
- Site Furnishing & Amenities
- Environmental Graphics
- Street Design
- Parking Lot Enhancement
- Vacant Lot Enhancement
- Project Team



# PLANT MATERIAL

## street trees

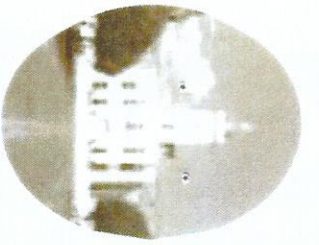
- Below is another option for street trees in areas where crowns can be larger:

Allee Hybrid Elm



### Streetscape Design Guidelines:

- Existing Streetscape
- Sidewalk Zone
- Sidewalk Paving
- Planting Infrastructure
- **Plant Material**
- Lighting & Electrical
- Site Furnishing & Amenities
- Environmental Graphics
- Street Design
- Parking Lot Enhancement
- Vacant Lot Enhancement
- Project Team



# PLANT MATERIAL

## Streetscape

### Design Guidelines:

- Existing Streetscape
- Sidewalk Zone
- Sidewalk Paving
- Planting Infrastructure
- **Plant Material**
- Lighting & Electrical
- Site Furnishing & Amenities
- Environmental Graphics
- Street Design
- Parking Lot Enhancement
- Vacant Lot Enhancement
- Project Team

## street trees

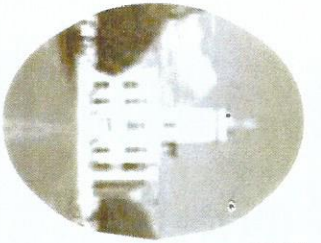
- Options for street trees in areas where crowns can be larger:

Autumn Blaze Maple



Green Vase Zelkova





# PLANT MATERIAL

## Streetscape

### Design Guidelines:

- Existing Streetscape
- Sidewalk Zone
- Sidewalk Paving
- Planting Infrastructure
- **Plant Material**
- Lighting & Electrical
- Site Furnishing & Amenities
- Environmental Graphics
- Street Design
- Parking Lot Enhancement
- Vacant Lot Enhancement
- Project Team

## bump out planting

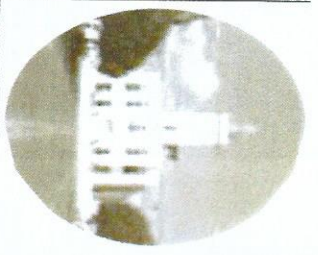
- These areas should incorporate compact shrubs, evergreen or deciduous materials, adapted to urban conditions such as:

Tuscan Blue Rosemary



Texas Sage

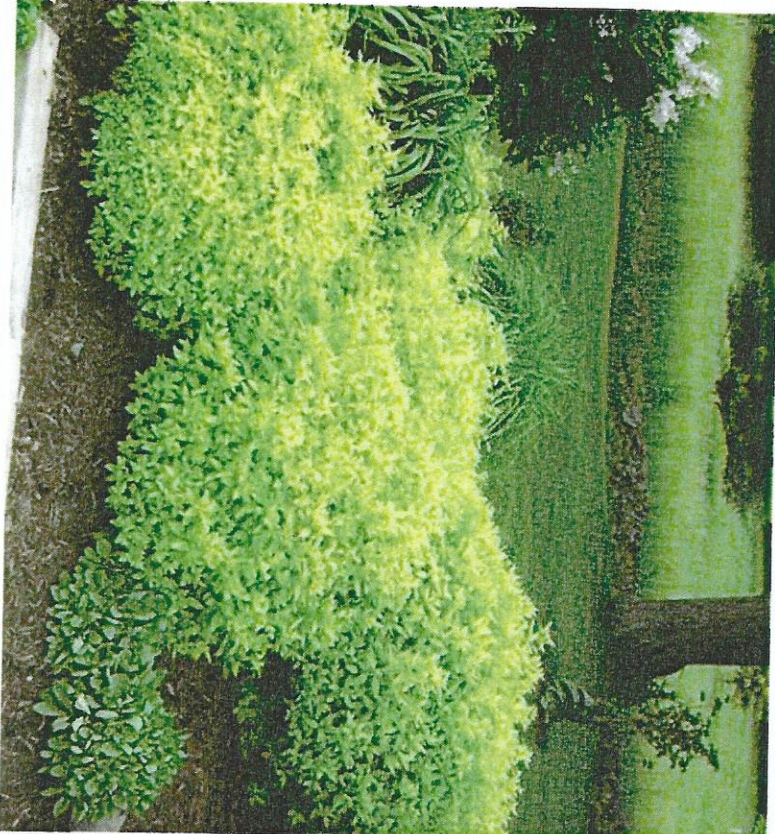




# PLANT MATERIAL

## bump out planting

- These areas should incorporate compact shrubs, evergreen or deciduous materials, adapted to urban conditions such as:



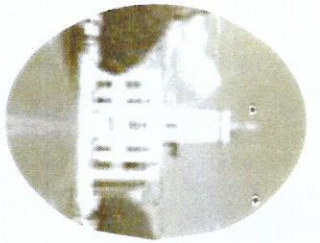
Goldmound Spiraea



Gulf Stream Nandina

### Streetscape Design Guidelines:

- Existing Streetscape
- Sidewalk Zone
- Sidewalk Paving
- Planting Infrastructure
- **Plant Material**
- Lighting & Electrical
- Site Furnishing & Amenities
- Environmental Graphics
- Street Design
- Parking Lot Enhancement
- Vacant Lot Enhancement
- Project Team



# PLANT MATERIAL

## Streetscape

### Design Guidelines:

- Existing Streetscape
- Sidewalk Zone
- Sidewalk Paving
- Planting Infrastructure
- **Plant Material**
- Lighting & Electrical
- Site Furnishing & Amenities
- Environmental Graphics
- Street Design
- Parking Lot Enhancement
- Vacant Lot Enhancement
- Project Team

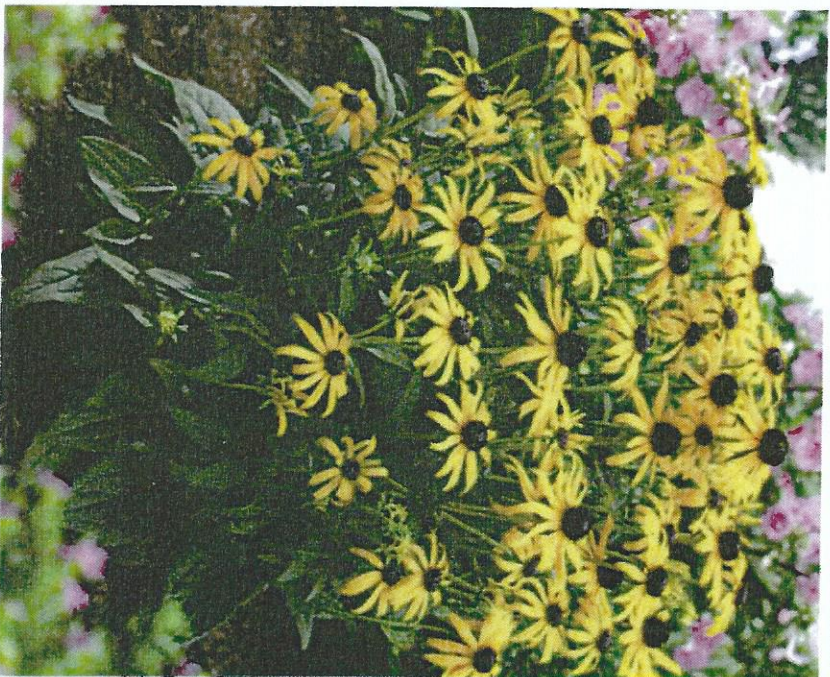
## bump out planting

- Utilize ornamental grasses and perennials such as:

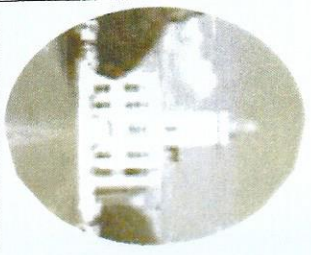
Pink Muhly Grass



Goldstrum Rudbeckia



# PLANT MATERIAL



## bump out planting

- Evergreen groundcovers can provide a contrast to the larger shrub and ornamental grasses such as:

Big Blue Liriope



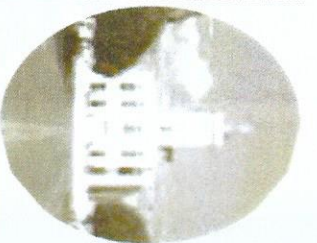
Variegated Liriope



### Streetscape Design Guidelines:

- Existing Streetscape
- Sidewalk Zone
- Sidewalk Paving
- Planting Infrastructure
- **Plant Material**
- Lighting & Electrical
- Site Furnishing & Amenities
- Environmental Graphics
- Street Design
- Parking Lot Enhancement
- Vacant Lot Enhancement
- Project Team

# PLANT MATERIAL



## rain garden planting

- Rain gardens can incorporate sedges and reeds such as:



Dense Sedge

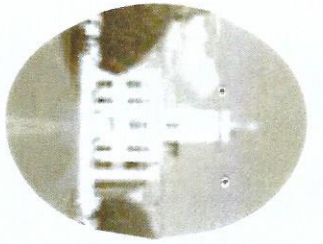


Horsetail Reed

## Streetscape Design Guidelines:

- Existing Streetscape
- Sidewalk Zone
- Sidewalk Paving
- Planting Infrastructure
- **Plant Material**
- Lighting & Electrical
- Site Furnishing & Amenities
- Environmental Graphics
- Street Design
- Parking Lot Enhancement
- Vacant Lot Enhancement
- Project Team





# PLANT MATERIAL

## Streetscape

### Design Guidelines:

- Existing Streetscape
- Sidewalk Zone
- Sidewalk Paving
- Planting Infrastructure
- **Plant Material**
- Lighting & Electrical
- Site Furnishing & Amenities
- Environmental Graphics
- Street Design
- Parking Lot Enhancement
- Vacant Lot Enhancement
- Project Team

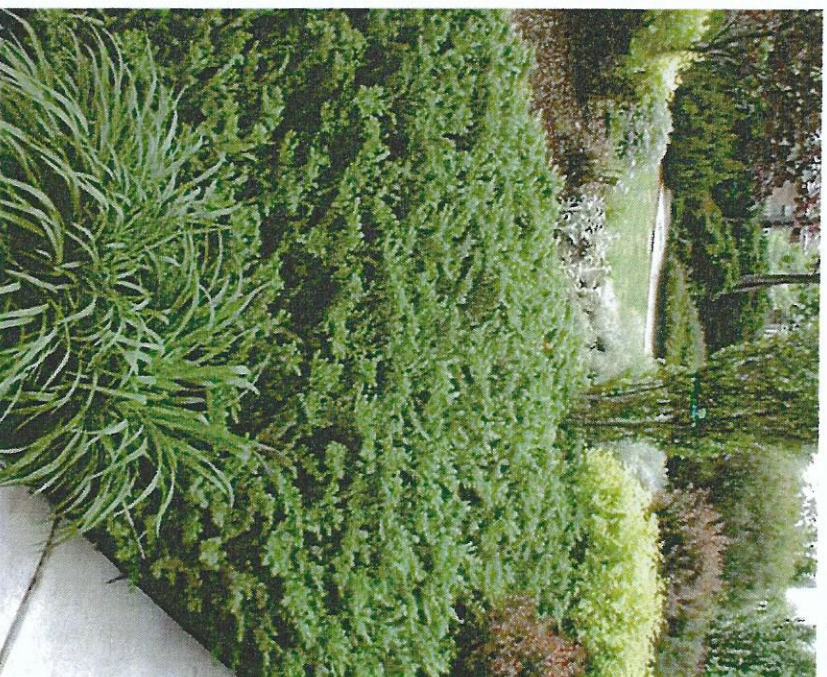
### bump out planting

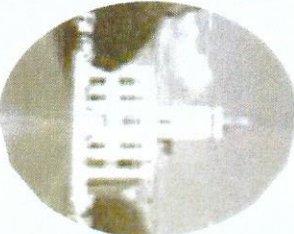
- Additional options for evergreen groundcover:

Asiatic Jasmine



Shore Juniper





# PLANT MATERIAL

## rain garden planting

- Plants should be selected to adapt to varying moisture levels in rain gardens.
- Rain gardens can incorporate ornamental grasses such as:



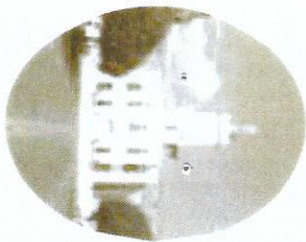
Little Blue Stem



Gulf Muhly Grass

### Streetscape Design Guidelines:

- Existing Streetscape
- Sidewalk Zone
- Sidewalk Paving
- Planting Infrastructure
- **Plant Material**
- Lighting & Electrical
- Site Furnishing & Amenities
- Environmental Graphics
- Street Design
- Parking Lot Enhancement
- Vacant Lot Enhancement
- Project Team



# PLANT MATERIAL

## Streetscape

### Design Guidelines:

- Existing Streetscape
- Sidewalk Zone
- Sidewalk Paving
- Planting Infrastructure
- **Plant Material**
- Lighting & Electrical
- Site Furnishing & Amenities
- Environmental Graphics
- Street Design
- Parking Lot Enhancement
- Vacant Lot Enhancement
- Project Team

## rain garden planting

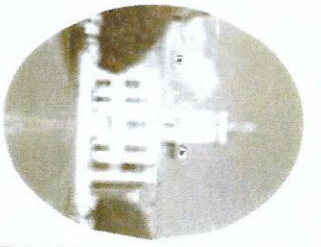
- Rain gardens can incorporate rush plantings such as:



Pickerel Rush



Soft Rush



# LIGHTING & ELECTRICAL

## Streetscape

### Design Guidelines:

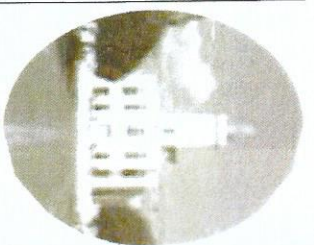
- Existing Streetscape
- Sidewalk Zone
- Sidewalk Paving
- Planting Infrastructure
- Plant Material
- **Lighting & Electrical**
- Site Furnishing & Amenities
- Environmental Graphics
- Street Design
- Parking Lot Enhancement
- Vacant Lot Enhancement
- Project Team

## Street Lighting

- Select pedestrian scale post lights, with a 15' to 18' height range.
- Utilize a metal pole of appropriate character and powdercoat finish.
- Provide LED or metal halide lamps with dark sky optics.
- Post lights, with a banner bracket option, can be incorporated (5th to Barraque Street only on South Main Street).



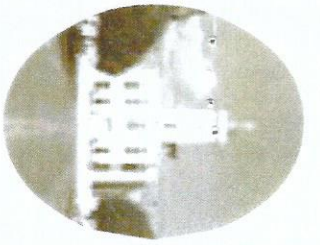
# LIGHTING & ELECTRICAL



- **electrical services**
- **for seasonal events (optional)**
- Confirm if post lights have electrical duplex outlets (top of pole).
- Confirm if power posts (with duplex outlets) are needed at street trees.



- **Streetscape Design Guidelines:**
- Existing Streetscape
- Sidewalk Zone
- Sidewalk Paving
- Planting Infrastructure
- Plant Material
- **Lighting & Electrical**
- Site Furnishing & Amenities
- Environmental Graphics
- Street Design
- Parking Lot Enhancement
- Vacant Lot Enhancement
- Project Team



## SITE FURNISHINGS & AMENITIES

### Streetscape

#### Design Guidelines:

- Existing Streetscape
- Sidewalk Zone
- Sidewalk Paving
- Planting Infrastructure
- Plant Material
- Lighting & Electrical
- **Site Furnishings & Amenities**
- Environmental Graphics
- Street Design
- Parking Lot Enhancement
- Vacant Lot Enhancement
- Project Team

### benches

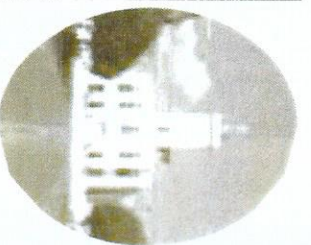
- A cohesive plan for site amenities should be developed. Listed below are options.
- Plainwell Bench by Landscape Forms.
- Cast metal supports with powdercoat finish. Ipe wood slats or similar, 6' length.

### trash receptacles

- Chase Park Receptacle by Landscape Forms.
- Metal with powdercoat finish. Side openings. Approximate capacity 36 gallon.

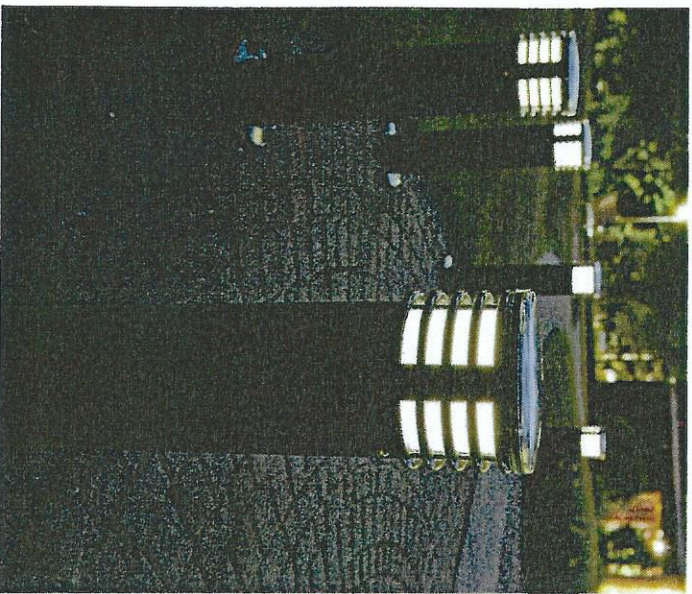


# SITE FURNISHINGS & AMENITIES



## **bollards**

- Annapolis Bollard by Landscape Forms.
- Metal with powdercoat finish.
- 36" approximate height.



## **bicycle racks**

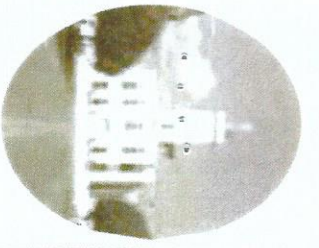
- Fio Bike Rack by Landscape Forms.
- Metal with powdercoat finish, with capacity suited to need and space requirements.



## **Streetscape**

### **Design Guidelines:**

- Existing Streetscape
- Sidewalk Zone
- Sidewalk Paving
- Planting Infrastructure
- Plant Material
- Lighting & Electrical
- **Site Furnishings & Amenities**
- Environmental Graphics
- Street Design
- Parking Lot Enhancement
- Vacant Lot Enhancement
- Project Team



## SITE FURNISHINGS & AMENITIES

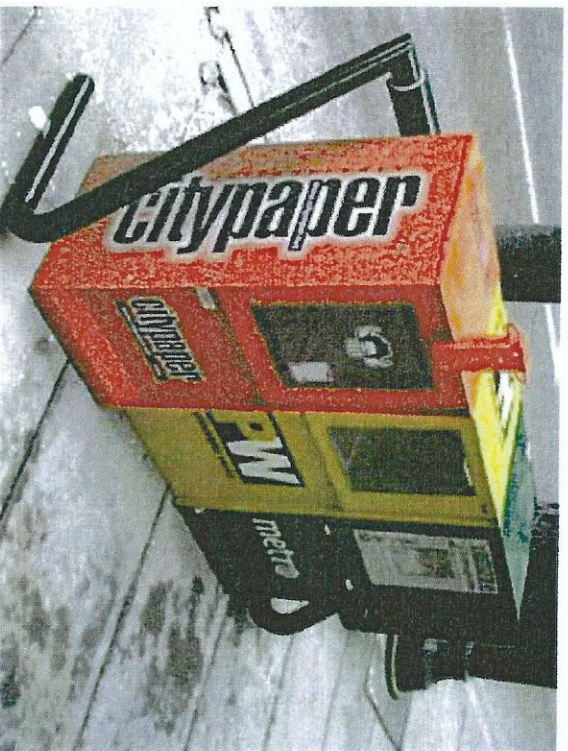
### Streetscape

#### Design Guidelines:

- Existing Streetscape
- Sidewalk Zone
- Sidewalk Paving
- Planting Infrastructure
- Plant Material
- Lighting & Electrical
- **Site Furnishings & Amenities**
  - Environmental Graphics
  - Street Design
  - Parking Lot Enhancement
  - Vacant Lot Enhancement
  - Project Team

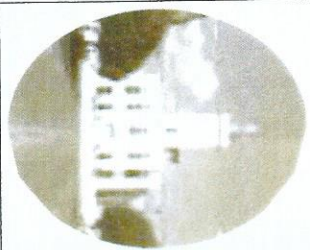
### newspaper and tabloid containment

- Provide a simple "corral system" to contain newspaper and tabloid boxes.





# SITE FURNISHINGS & AMENITIES



## Streetscape Design Guidelines:

- Existing Streetscape
- Sidewalk Zone
- Sidewalk Paving

- Planting  
Infrastructure

- Plant Material

- Lighting & Electrical

## • Site Furnishings & Amenities

- Environmental  
Graphics

- Street Design

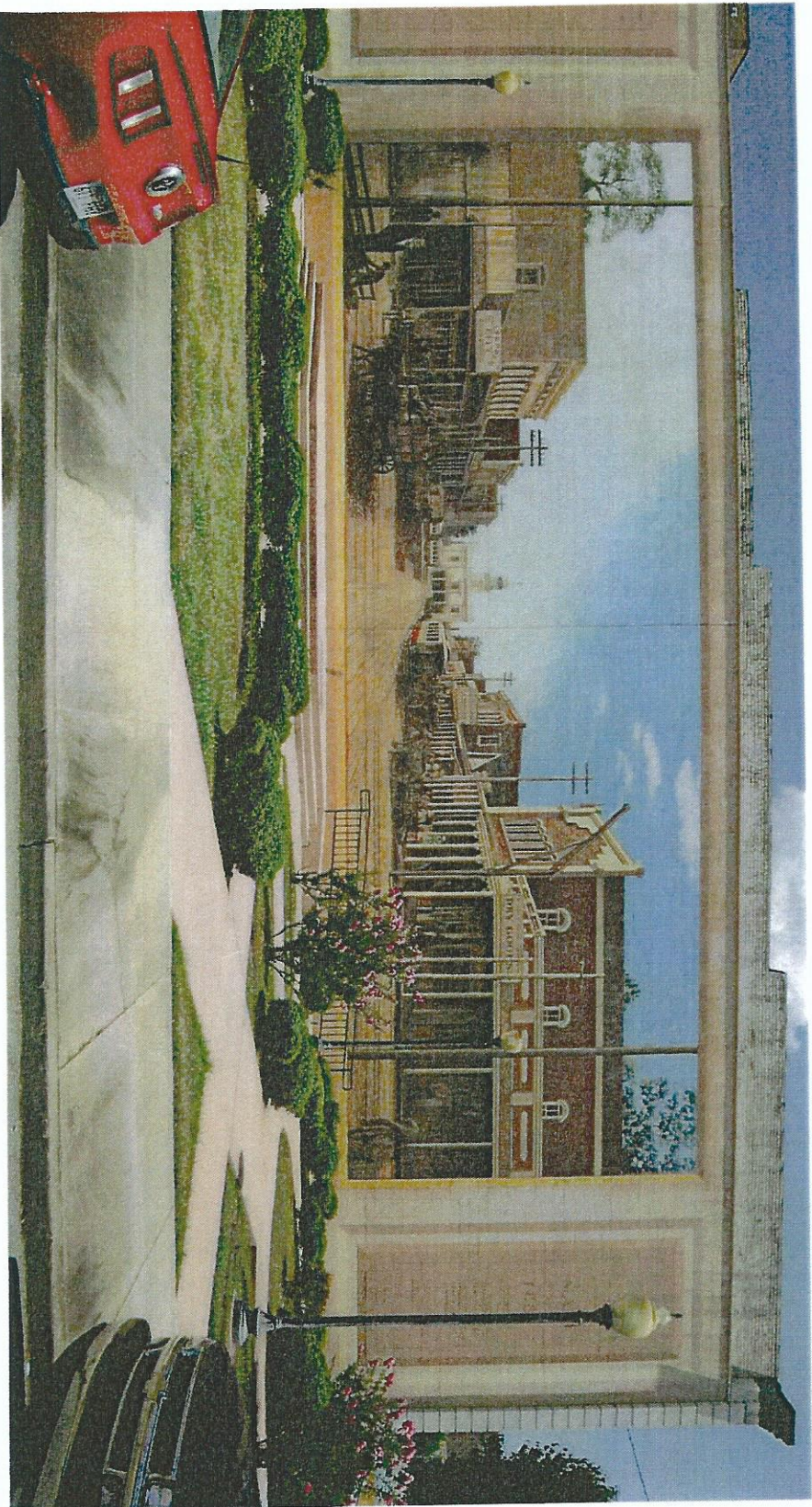
- Parking Lot  
Enhancement

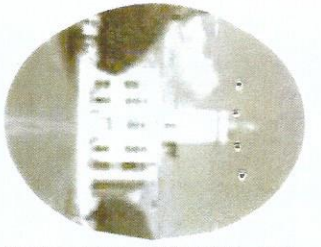
- Vacant Lot  
Enhancement

- Project Team

## public art

- A restoration program is underway for downtown murals.
- Public art can be integrated with streetscape paving or other elements.
- A Public art committee could administer the program, artist selections and implementation.





# ENVIRONMENTAL GRAPHICS

## Streetscape

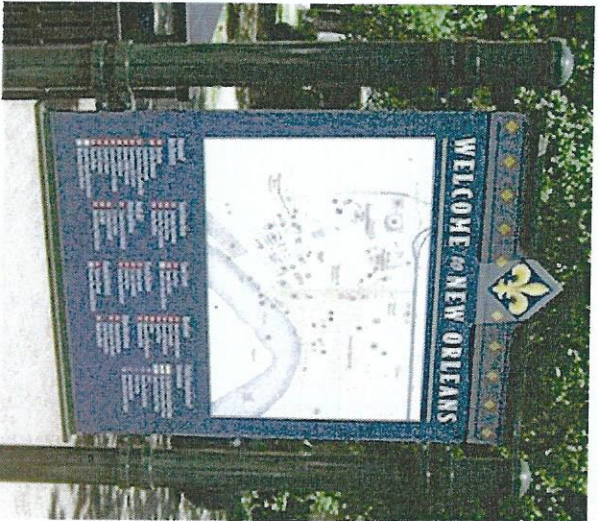
### Design Guidelines:

- Existing Streetscape
- Sidewalk Zone
- Sidewalk Paving
- Planting Infrastructure
- Plant Material
- Lighting & Electrical
- Site Furnishing & Amenities
- **Environmental Graphics**
  - Street Design
  - Parking Lot Enhancement
  - Vacant Lot Enhancement
  - Project Team

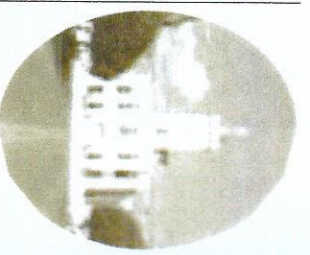
## signs

- Materials and graphic design for all signs (and optional kiosks) must be coordinated.
- Signs should be metal with an appropriate painted finish.
- There are three classifications for signs:
  - Identification signs. Street signs, traffic signs.
  - Wayfinding signs. Includes downtown map with "you are here".
  - Interpretive signs. Interpret history of downtown and Pine Bluff.

Utilize graphic archives including historic post card collection.



# ENVIRONMENTAL GRAPHICS

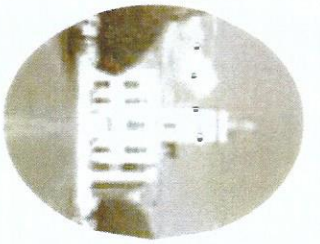


- **Kiosks (optional)**
- Kiosks may be desired at several key locations as a downtown bulletin board for events.
- They should be metal with an appropriate painted finish.
- Provide vertical panels with two sides for display.
- Materials and graphic design for kiosks must be coordinated with signage.



## Streetscape Design Guidelines:

- Existing Streetscape
- Sidewalk Zone
- Sidewalk Paving
- Planting
- Infrastructure
- Plant Material
- Lighting & Electrical
- Site Furnishing & Amenities
- **Environmental Graphics**
- Street Design
- Parking Lot Enhancement
- Vacant Lot Enhancement
- Project Team



# STREET DESIGN

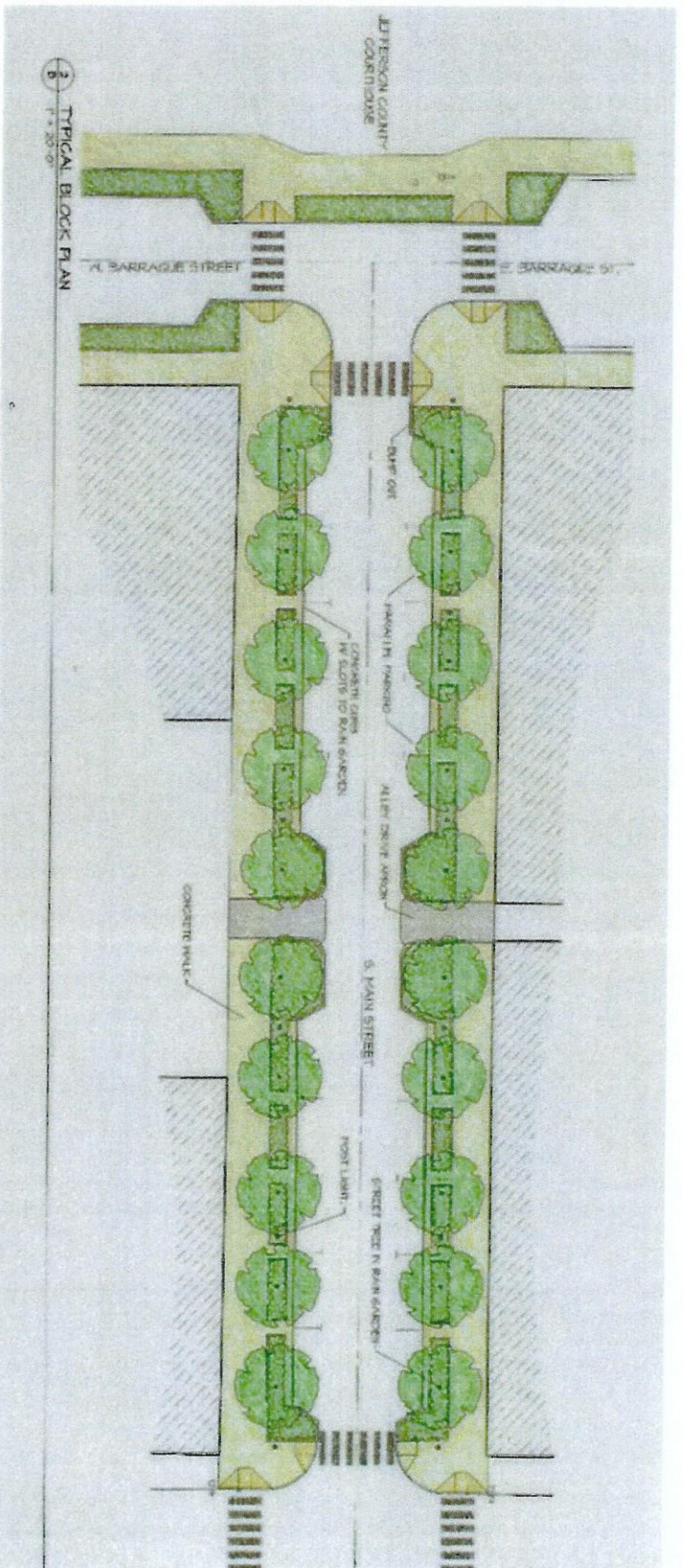
## Streetscape

### Design Guidelines:

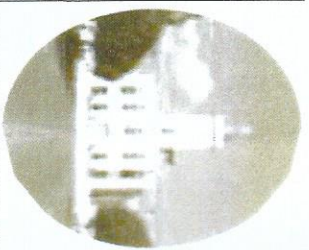
- Existing Streetscape
- Sidewalk Zone
- Sidewalk Paving
- Planting Infrastructure
- Plant Material
- Lighting & Electrical
- Site Furnishing & Amenities
- Environmental Graphics
- **Street Design**
  - Parking Lot Enhancement
  - Vacant Lot Enhancement
  - Project Team

## standard street option (north of 4th in master plan)

- Two travel lanes are adequate for Main and Barraque (delete 2 lanes).
- Provide 11' lane width with asphalt paving.



# STREET DESIGN



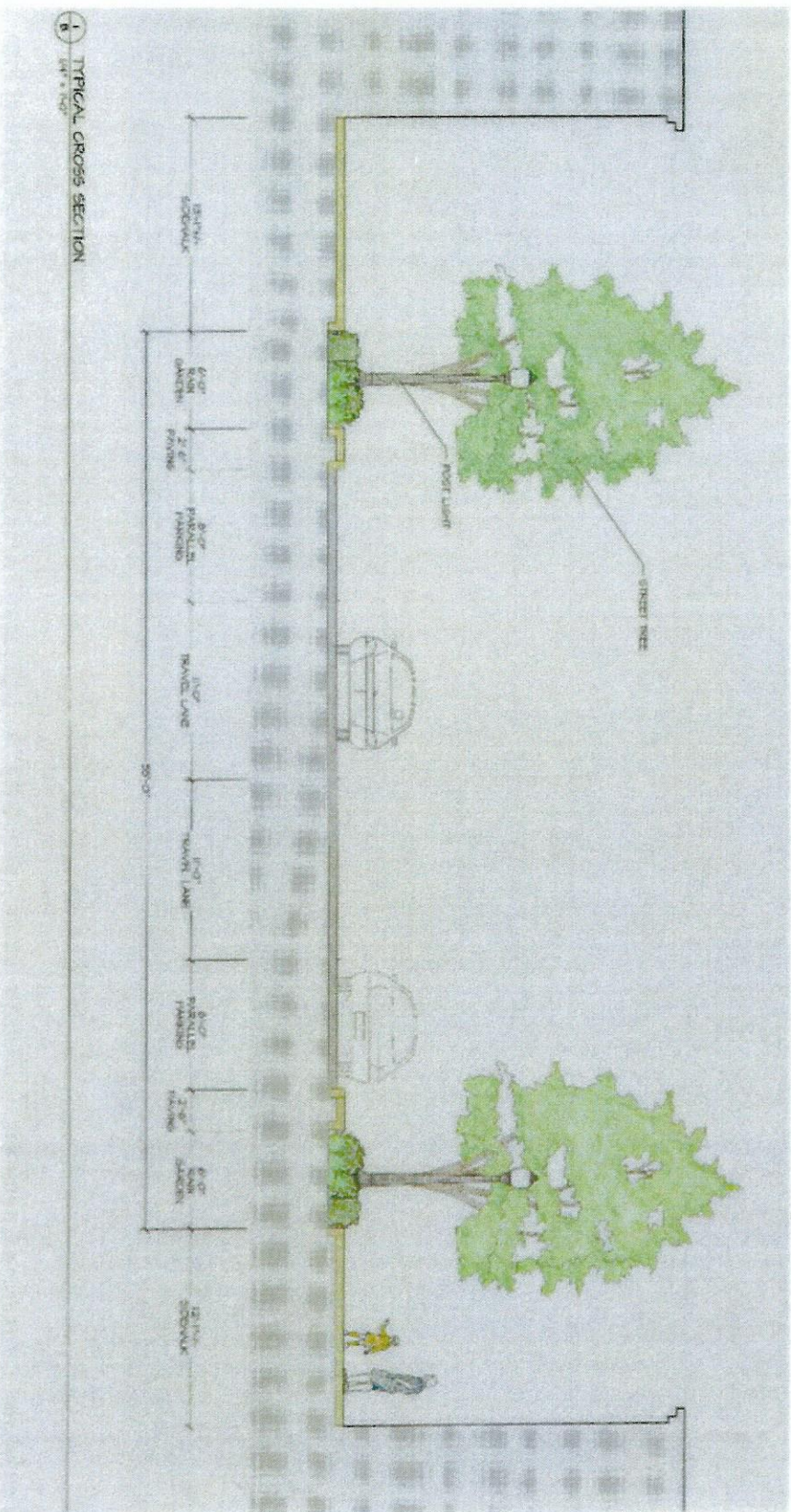
## Streetscape

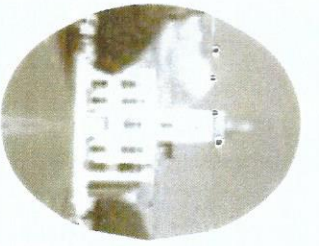
### Design Guidelines:

- Existing Streetscape
- Sidewalk Zone
- Sidewalk Paving
- Planting Infrastructure
- Plant Material
- Lighting & Electrical
- Site Furnishing & Amenities
- Environmental Graphics
- **Street Design**
  - Parking Lot Enhancement
  - Vacant Lot Enhancement
  - Project Team

## standard street option (north of 4th in master plan)

- Maintain parallel parking on Main and Barraque.
- Provide 8' width x 23' length spaces.
- Provide asphalt paving. Consider incorporating permeable paving in certain areas.





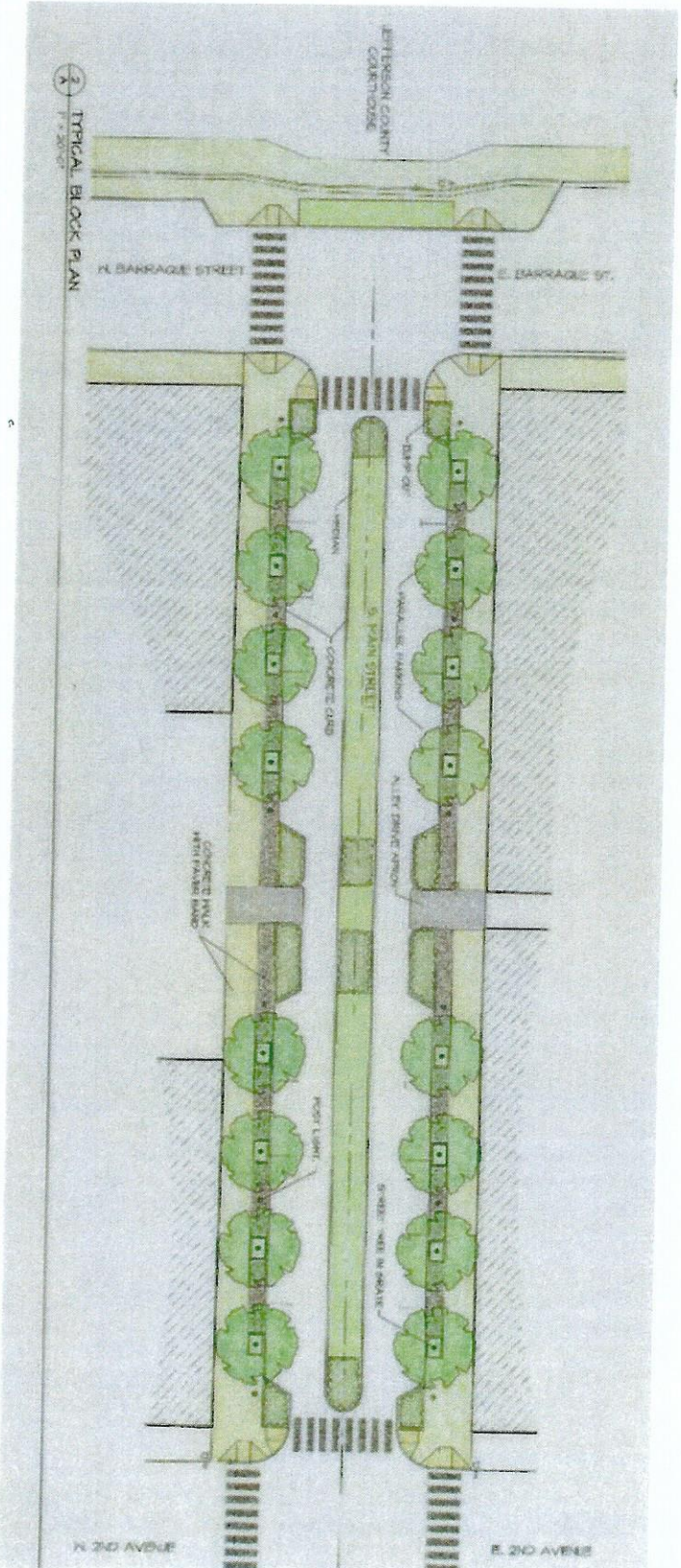
# STREET DESIGN

## Streetscape

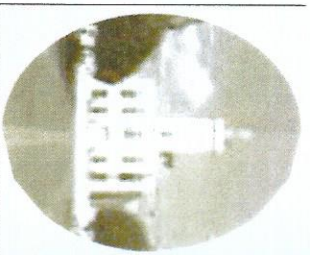
### Design Guidelines:

- Existing Streetscape
- Sidewalk Zone
- Sidewalk Paving
- Planting Infrastructure
- Plant Material
- Lighting & Electrical
- Site Furnishing & Amenities
- Environmental Graphics
- **Street Design**
  - Parking Lot Enhancement
  - Vacant Lot Enhancement
  - Project Team

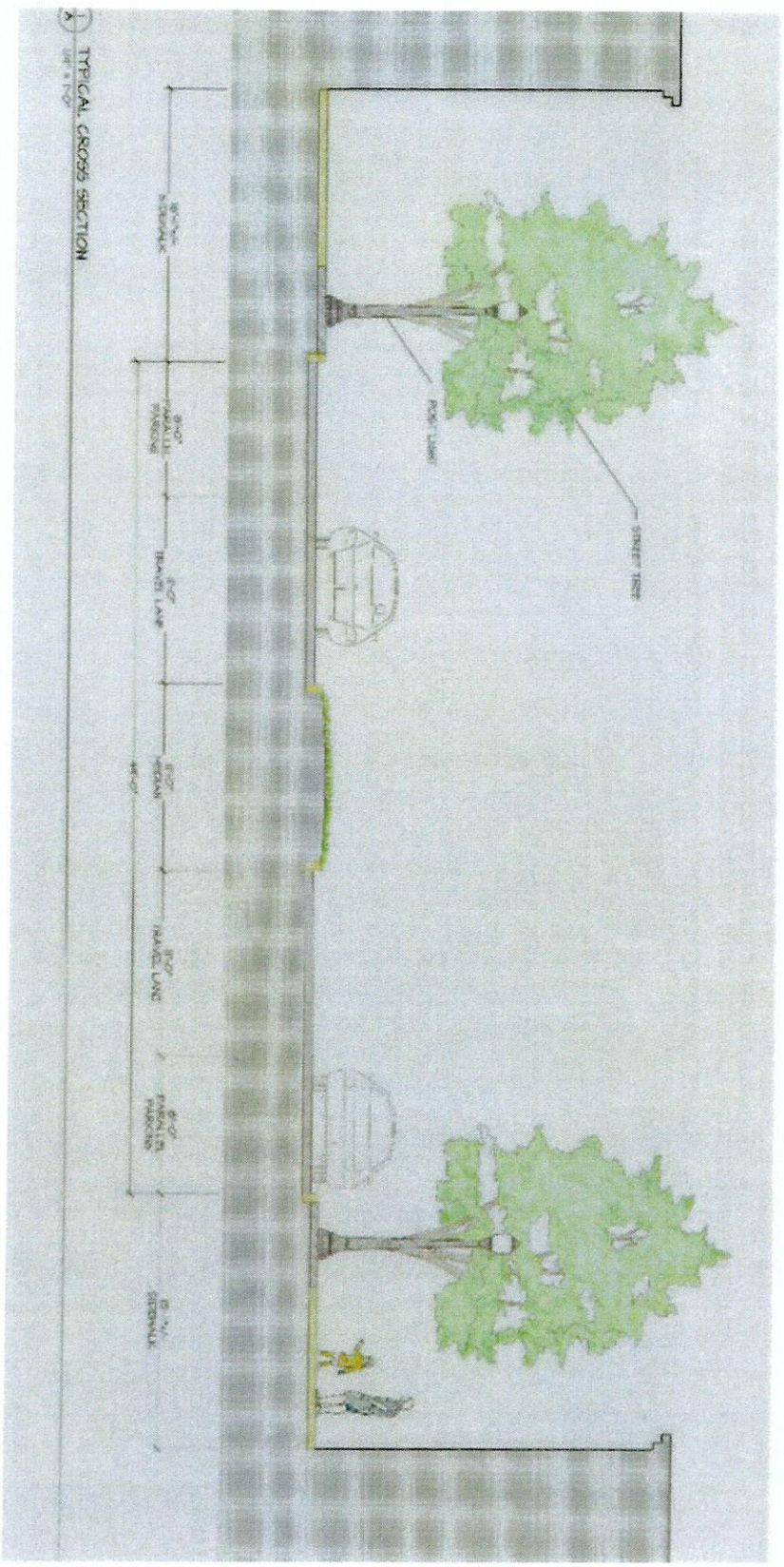
- **median boulevard option (south of 4th in master plan)**
- Consider 11' wide landscape median in certain blocks as appropriate.
- Provide lawn and some low maintenance planting in median. Irrigation is optional.
- Maintain visibility at all intersections and crosswalks.



# STREET DESIGN

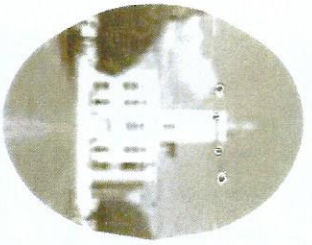


## median boulevard option (south of 4th in master plan)



### Streetscape Design Guidelines:

- Existing Streetscape
- Sidewalk Zone
- Sidewalk Paving
- Planting Infrastructure
- Plant Material
- Lighting & Electrical
- Site Furnishing & Amenities
- Environmental Graphics
- **Street Design**
  - Parking Lot Enhancement
  - Vacant Lot Enhancement
  - Project Team



# STREET DESIGN

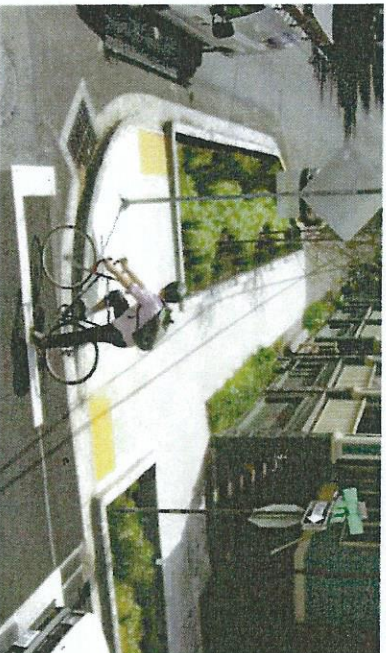
## Streetscape

### Design Guidelines:

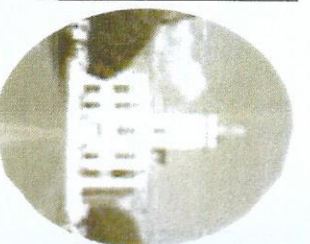
- Existing Streetscape
- Sidewalk Zone
- Sidewalk Paving
- Planting Infrastructure
- Plant Material
- Lighting & Electrical
- Site Furnishing & Amenities
- Environmental Graphics
- **Street Design**
- Parking Lot Enhancement
- Vacant Lot Enhancement
- Project Team

## Crosswalks and bump outs

- “Zebra” crosswalk striping with thermoplastic material are recommended.
- Add bump outs at intersection corners with ADA ramps.
- Extend sidewalk paving at bump outs and incorporate planting as appropriate.
- Select low compact plantings which maintain both vehicular and pedestrian visibility.







# STREET DESIGN

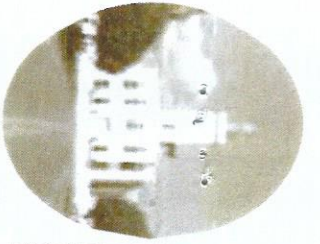
## rain gardens

- Add linear rain gardens along entire block behind curb, to receive street drainage.
- Provide 2' wide collector walk behind curb to accommodate pedestrians adjacent to parking spaces.
- Provide 4' wide walks across rain garden, from collector walk to main sidewalk.
- Provide rain garden plantings with appropriate riparian materials which are low maintenance. No irrigation would be included.



## Streetscape Design Guidelines:

- Existing Streetscape
- Sidewalk Zone
- Sidewalk Paving
- Planting Infrastructure
- Plant Material
- Lighting & Electrical
- Site Furnishing & Amenities
- Environmental Graphics
- **Street Design**
- Parking Lot Enhancement
- Vacant Lot Enhancement
- Project Team



# PARKING LOT ENHANCEMENT

## Streetscape

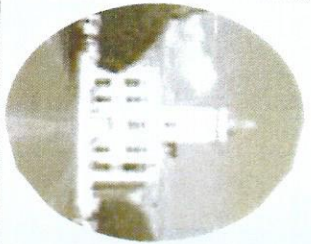
### Design Guidelines:

- Existing Streetscape
- Sidewalk Zone
- Sidewalk Paving
- Planting Infrastructure
- Plant Material
- Lighting & Electrical
- Site Furnishing & Amenities
- Environmental Graphics
- Street Design
- **Parking Lot Enhancement**
- Vacant Lot Enhancement
- Project Team

## parking lot interior

- Increase the amount of planting islands with trees in parking areas.
- Provide a grid or bosque of canopy trees for shade.
- Trees can be incorporated in conventional islands, rain gardens, or in pervious paving inlays as appropriate.

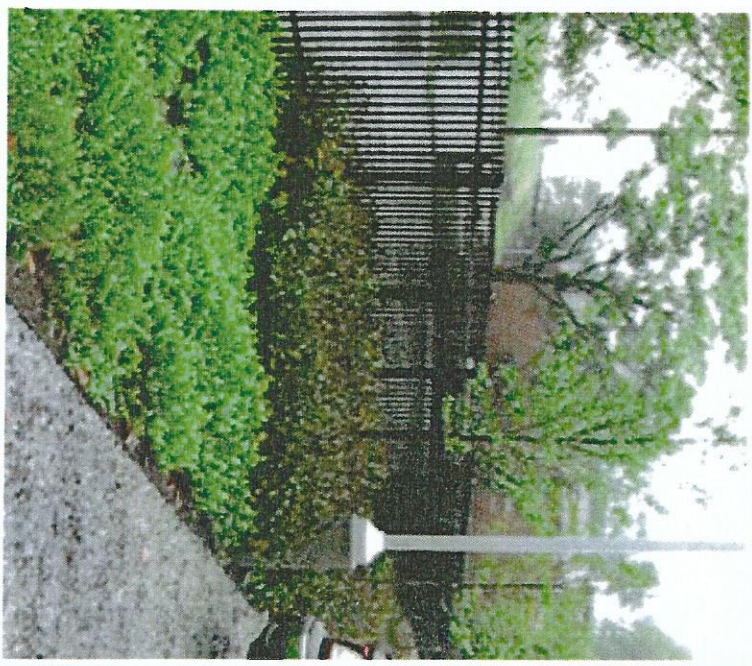




# PARKING LOT ENHANCEMENT

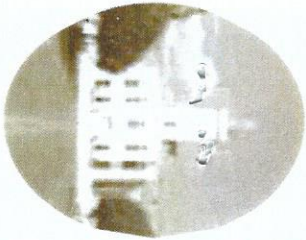
## **parking lot perimeter**

- Along Main Street, utilize low masonry walls to screen parking and create architectural edge.
- Walls should be 30" to 36" height, with a brick veneer, compatible with adjacent historic buildings.
- On perimeter blocks, develop larger planting area to provide a "green edge" to parking areas.
- Provide simple low plantings, which are low maintenance, to compliment walls or fences.



### **Streetscape Design Guidelines:**

- Existing Streetscape
- Sidewalk Zone
- Sidewalk Paving
- Planting Infrastructure
- Plant Material
- Lighting & Electrical
- Site Furnishing & Amenities
- Environmental Graphics
- Street Design
- **Parking Lot Enhancement**
- Vacant Lot Enhancement
- Project Team



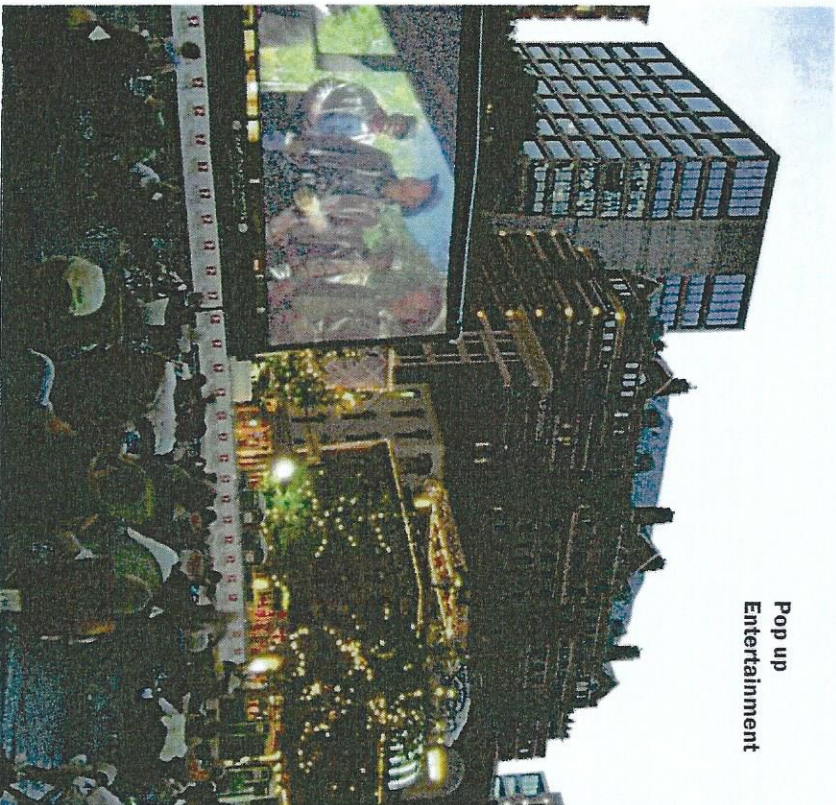
# VACANT LOT ENHANCEMENT

## Streetscape Design Guidelines:

- Existing Streetscape
- Sidewalk Zone
- Sidewalk Paving
- Planting Infrastructure
- Plant Material
- Lighting & Electrical
- Site Furnishing & Amenities
- Environmental Graphics
- Street Design
- Parking Lot Enhancement
- Vacant Lot Enhancement
- Project Team

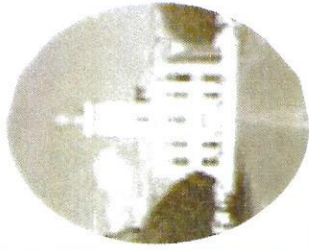
## enhancement options

- Clean up vacant lots and remove debris and excess paving where feasible.
- Create temporary green spaces, mini parks, or community gardens.
- Create “buffers” adjacent to pedestrian walks to help screen vacant lots and provide a green edge.



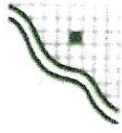
Pop up  
Entertainment





# PROJECT TEAM

**Mr. Tim Brockway**  
McClelland Consulting Engineers, LLC  
900 West Markham St  
Little Rock, Arkansas 72201  
Telephone: 501.371.0272  
Fax: 501.371.9932

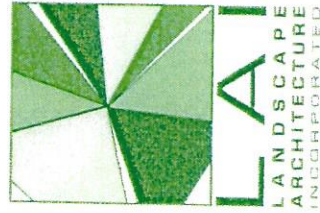


## Ritchie Smith Associates

Planning • Landscape Architecture • Urban Design

**Mr. Ritchie Smith**  
Ritchie Smith Associates  
65 Union Avenue  
Suite 1140  
Memphis, TN 38103  
Telephone 901.525.1198  
Fax 901.525.1190

**Mrs. Cinde Bauer Drilling**  
Landscape Architecture Inc.  
2300 Cottondale Lane  
Suite 200  
Little Rock, AR 72202  
Telephone 501.374.5610  
Fax 501.664.1480



## Reed Architectural Firm

**Mr. Fred Reed**  
Reed Architectural Firm  
417 West 6th Avenue  
Pine Bluff, AR 71601  
Telephone 870.534.2425

### Streetscape Design Guidelines:

- Existing Streetscape
- Sidewalk Zone
- Sidewalk Paving
- Planting Infrastructure
- Plant Material
- Lighting & Electrical
- Site Furnishing & Amenities
- Environmental Graphics
- Street Design
- Parking Lot Enhancement
- Vacant Lot Enhancement
- **Project Team**