



2023-2026 TRANSPORTATION IMPROVEMENT PLAN



DRAFT 9-27-2022

**Pine Bluff Area Transportation Study
- PBATS**

Southeast Arkansas Regional
Planning Commission

PREPARED BY SOUTHEAST ARKANSAS REGIONAL
PLANNING IN COOPERATION WITH THE ARKANSAS
DEPARTMENT OF TRANSPORTATION, FEDERAL
HIGHWAY ADMINISTRATION AND FEDERAL TRANSIT
ADMINISTRATION

**PINE BLUFF AREA TRANSPORTATION STUDY
JEFFERSON COUNTY – PINE BLUFF – WHITE HALL**

**TRANSPORTATION
IMPROVEMENT
PROGRAM**

FISCAL YEARS 2023 - 2026

Prepared by:

Southeast Arkansas Regional Planning Commission

In cooperation with:

**Arkansas Department of Transportation
Cities of Pine Bluff and White Hall
Jefferson County
Federal Highway Administration
Federal Transit Administration**

The preparation and publication of this document is in accordance with the 2045 PBATS Metropolitan Transportation Plan, the Moving Ahead for Progress in the 21st Century (MAP-21) Act and Fixing America's Surface Transportation (FAST) Act in cooperation with the Arkansas Department of Transportation, the Federal Highway Administration, the Federal Transit Administration, and local agencies. This report was financed in part by funds provided by the United States Department of Transportation, Federal Highway Administration, and Federal Transit Administration. The provision of Federal financial assistance should not be construed as denoting U.S. governmental approval of plans, policies, programs, or projects contained herein.

NOTICE OF NONDISCRIMINATION:

The Southeast Arkansas Regional Planning Commission (SARPC) complies with all civil rights provisions of federal statutes and related authorities that prohibit discrimination in programs and activities receiving federal financial assistance. Therefore, SARPC does not discriminate on the basis of race, sex, color, age, national origin, religion, or disability, in the admission, access to and treatment in SARPC'S programs and activities, as well as the SARPC'S hiring or employment practices. Complaints of alleged discrimination and inquiries regarding the SARPC'S nondiscrimination policies may be directed to Larry Reynolds, Director/Study Director, 1300 Ohio, Suite B, Pine Bluff, AR 71601 (870) 534-4247 or the following email address:
larryreynolds@cablelynx.com.

TABLE OF CONTENTS

TIP PURPOSE	1
METROPOLITAN PLANNING ORGANIZATIONS (MPO)	2
GLOSSARY OF TERMS, ABBREVIATIONS AND ACRONYMS	5
INFORMATION ON FEDERAL FUNDING	10
INFORMATION ON GENERIC PROJECTS	12
STIP INTRODUCTION / PERFORMANCE MANAGEMENT	15
PERFORMANCE MEASURE TARGETS Calendar Year 2023	18
LOCAL PROJECT SELECTION PROCESS	21
LOCAL PROJECTS	23
LOCAL PROJECTS MAPS	24-25
HIGHWAY AND ROAD PROJECTS (2023 – 2026)	26
Road Projects including Generic Projects FFY 2023	26-29
Road Projects including Generic Projects FFY 2024	29-31
Road Projects including Generic Projects FFY 2025	31-34
Road Projects including Generic Projects FFY 2026	34-37
TRANSIT PROJECTS (2023 – 2026)	37-44
Transit Projects FFY 2023	37-39
Transit Projects FFY 2024	39-41
Transit Projects FFY 2025	41-43
Transit Projects FFY 2026	43-44
Glossary of Terms / Abbreviations / Acronyms	45
STATEWIDE AND LOCAL FINANCIAL SUMMARIES	46
Statewide and Local Financial Summary Table	46
SUMMARY OF TRANSIT FUNDS	47
ANNUAL LISTING OF OBLIGATED PROJECTS (ALOP)	47-48
2021-2024 TIP PROJECT STATUS	48
ENVIRONMENTAL JUSTICE	49
CERTIFICATIONS AND ASSURANCES	50-52
Self-Certification	51
Certification and Assurances	52
ADOPTING RESOLUTION	53
APPENDIX	54
Public Comments Received	54

**PINE BLUFF AREA TRANSPORTATION STUDY
TRANSPORTATION IMPROVEMENT PROGRAM
FY 2021 - 2024**

TIP PURPOSE

The Southeast Arkansas Regional Planning Commission (SARPC) serves as the designated Metropolitan Planning Organization (MPO) and is responsible for the transportation planning activities in Pine Bluff, White Hall, and a portion of Jefferson County, Arkansas. The Metropolitan Planning Area (MPA) includes within the geographic area that portion of Jefferson County designated by the 2020 Census as the Pine Bluff Urbanized Area.

The FFY 2023 – 2026 Transportation Improvement Program (TIP) has been developed as a part of the 3C (continuing, cooperative, and comprehensive) planning program as established under planning regulations of the U.S. Department of Transportation. The FFY 2023 – 2026 TIP includes all transportation improvements planned or programmed within the MPA that will utilize Federal funding for all or part of their implementation costs. The purpose of the TIP is for it to be used as a program management tool to coordinate the Metropolitan Transportation Plan and ensure that the projects that are the recipient of these Federal funds agree with the 2045 PBATS Metropolitan Transportation Plan adopted on September 29, 2020.

The projects that are listed in the FFY 2023 – 2026 TIP have been selected by and coordinated with local governments within the MPA and with ArDOT. They have been reviewed for consistency with the 2045 MTP, responsiveness to local and regional needs, and for the availability of Federal funds and non-Federal matching funds. This Federal and non-matching Federal matching fund fiscal constraint is a primary component of the TIP.

The fiscal constraint component means that there is a reasonable expectation of Federal funds being available for the projects listed in the five-year TIP period.

TIP Required Information

- A list of projects and strategies including investments in pedestrian and bicycle transportation facilities, as well as roadways and transit.
- A financial plan.
- A “visual” component that helps the reader to better understand the nature of the project.
- Compliance with all the requirements of the Fixing America’s Surface Transportation (FAST) Act.

Metropolitan Planning Organizations (MPO)

With respect to urban areas greater than 50,000 in population, projects listed in the Transportation Improvement Programs (TIPs) that have been developed by the various MPOs are hereby included as part of the overall Federal-Aid Highway Program and Federal-Aid Transit Program. For additional information on projects located within a MPO area, please contact the appropriate MPO.

- CARTS** **Central Arkansas Regional Transportation Study**
(Pulaski, Saline, Faulkner, & Lonoke Counties)
Metroplan
Casey Covington, Study Director
501 West Markham, Suite B
Little Rock, AR 72201
Telephone: 501-372-3300
Email: CCovington@metroplan.org
- Frontier** **Frontier Transportation Study**
(Crawford & Sebastian Counties in Arkansas)
(Le Flore & Sequoyah Counties in Oklahoma)
Frontier Metropolitan Planning Organization
Ms. Reese Brewer, Study Director
1109 South 16th Street
Fort Smith, AR 72901
Telephone: 479-785-2651
Email: RBrewer@wapdd.org
- HSATS** **Hot Springs Area Transportation Study**
(Garland & Hot Springs Counties)
Tr-Lakes Metropolitan Planning Organization
Derrick Harris, MPO Study Director
1000 Central Avenue
Hot Springs, AR 71902
Telephone: 501-525-7577
Email: dharris@wcpdd.org
- JATS** **Jonesboro Area Transportation Study**
(Craighead County)
Northeast Arkansas Regional Transportation Planning Commission
Ms. Cecelie Cochran, MPO Director
300 South Church Street
Jonesboro, AR 72401
Telephone: 870-933-4623
Email: CCochran@jonesboro.org

NARTS **Northwest Arkansas Regional Transportation Study**
(Washington & Benton Counties in Arkansas)
(McDonald County in Missouri)

Northwest Arkansas Regional Planning Commission
Mr. Jeff Hawkins, Executive Director
Tim Conklin, MPO Study Director
1311 Clayton St.
Springdale, AR 72762
Telephone: 479-751-7125
Email: TConklin@nwarpc.org

PBATS **Pine Bluff Area Transportation Study**
(Jefferson County)

Southeast Arkansas Regional Planning Commission
Mr. Larry Reynolds, Study Director
1300 Ohio Street, Suite B
Pine Bluff, AR 71601
Telephone: 870-534-4247
Email: larryreynolds@cablelynx.com

TUTS **Texarkana Urban Transportation Study**
(Miller County in Arkansas)
(Bowie County in Texas)

Texarkana Metropolitan Planning Organization
Ms. Rea Donna Jones, Study Director
220 Texas Blvd.
Texarkana, TX 75501
Telephone: 903-798-3927
Email: ReaDonna.Jones@txkusa.org

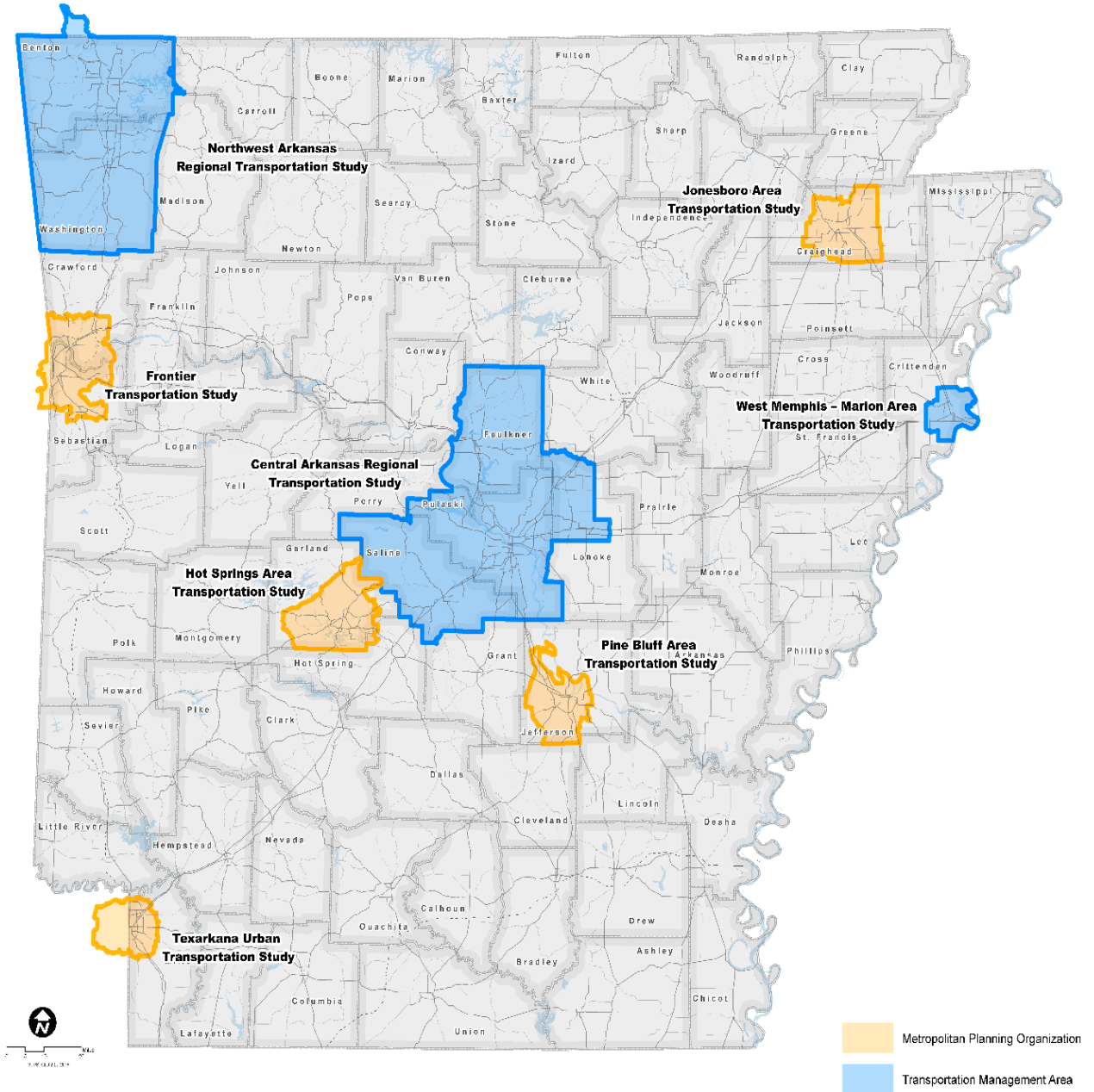
WMATS **West Memphis – Marion Area Transportation Study**
(Crittenden County)

West Memphis Metropolitan Planning Organization
Ms. Amanda Hicks, MPO Director
796 West Broadway
West Memphis, AR 72301
Telephone: 870-735-8148
Email: ahicks@westmemphisar.gov

Additional information regarding this program may be obtained by contacting:

Jared Wiley
Division Engineer for Transportation Planning and Policy
Arkansas Department of Transportation
P.O. Box 2261
Little Rock, Arkansas 72203
Telephone: (501) 569-2201
Email: TPPD@ardot.gov

Transportation Management Areas And Metropolitan Planning Organizations



GLOSSARY OF TERMS, ABBREVIATIONS AND ACRONYMS

4-R	Resurfacing, Restoration, Rehabilitation, and Reconstruction
AC	Advance Construction – one of several Federal-aid fund management tools designed to provide states with greater flexibility in managing Federal-aid highway funds. The primary benefit of AC is that it allows states to accelerate transportation projects using non-federal funds while maintaining eligibility to be reimbursed with Federal-aid funds at a later date.
ArDOT	Arkansas Department of Transportation
Bond	Bond Proceeds
BR	Bridge
Bs. & Surf.	Base and Surfacing – including, but not limited to, asphalt, and curb, and gutter.
CAP	Connecting Arkansas Program – In 2012, through a voter-approved constitutional amendment, the people of Arkansas passed a 10-year, half-cent sales tax to improve the State’s transportation system, including projects that widen and improve approximately 200 miles of highways and interstates.
Capacity Improvements	Widening of existing facilities or construction of new facilities to increase capacity.
CARTS	Central Arkansas Regional Transportation Study – the Metropolitan Planning for the urbanized area in Pulaski, Saline, Faulkner, and a portion of Lonoke Counties. (See also Metroplan.)
CENG	Construction Engineering and Inspection
CMAQ	See Information on Federal Funding.
CMAQ AQ	See Information on Federal Funding.
CMAQ Flex	See Information on Federal Funding.
CR	County Road
CS	City Street
DBE	See Information on Federal Funding.
Diamond Grinding	A pavement preservation technique that corrects a variety of surface imperfections on both concrete and asphalt pavements providing a significant improvement in the smoothness of a pavement.
Earmark	Federal funds that are designated for a particular purpose.
EFLHD	Eastern Federal Lands Highway Division of the Federal Highway Administration – division of the USDOT that promotes administration of federal public roads and bridges, protects, and enhances natural resources and provides transportation access for Native Americans
Eng.	Engineering
Env.	Environmental

GLOSSARY OF TERMS, ABBREVIATIONS AND ACRONYMS (continued)

FAST ACT	Fixing America's Surface Transportation Act – this act funds the Federal Highway Program from Federal Fiscal Years (FFY) 2016-2020.
Federal Lands	Lands owned or administered by the Federal government. Examples are: National parks, national wildlife refuges, military reservations, federal prisons, and public domain land.
Ferry Boat	See Information on Federal Funding.
FFY	Federal Fiscal Year – a pre-defined 12-month period from October 1 to September 30.
FHWA	Federal Highway Administration – an agency within the U.S. Department of Transportation that supports state and local governments in the design, construction, and maintenance of the Nation's Transportation system.
FLAP	See Information on Federal Funding.
Frontier	Frontier Transportation Study – the Metropolitan Transportation Planning Organization (MPO) for the Urbanized area in Crawford and Sebastian Counties. (See also MPO.)
FTA	Federal Transit Administration – an agency within the USDOT that provides financial and technical assistance to local public transit systems.
FTA-5304	Federal funding for transit system statewide planning and programming.
FTA-5305	Federal funding for transit system planning projects.
FTA-5307	Urbanized area formula grants – provides competitive Federal funding to public transit systems in urbanized areas.
FTA-5310	Federal funding for enhanced mobility of seniors and individuals with disabilities.
FTA-5311	Federal formula grant funds for transit in rural areas / populations < 50,000.
FTA-5329	Federal funds for transit safety and oversight programs.
FTA-5337	State of good repair grants – federally funded capital assistance for maintenance, replacement, and rehabilitation of motorbus systems. Additionally, can be used for Transit Asset Management plans.
FTA-5339	Federal Bus and Bus Facilities Grants Program – must be “low” or “no” emission transit or equipment.
GARVEE Bonds	Grant Anticipation Revenue Vehicles (GARVEE Bonds) – a tool used by many states to finance highway projects, secured by the Federal Highway Trust Fund, to enable the acceleration of construction timelines and spread the cost of a transportation facility over its useful life.
Gr. Strs.	Grading and structures – includes dirt work and bridge building.
HSATS	Hot Springs Area Transportation Study – the Metropolitan Planning Organization (MPO) for the urbanized area in Garland County. (See also MPO.)
HIP	Highway Infrastructure Program. See information on Federal Funding.
HIP>200K	Highway Infrastructure Program. See information on Federal Funding.

GLOSSARY OF TERMS, ABBREVIATIONS AND ACRONYMS (continued)

HSIP	See Information on Federal Funding.
Improve Air Quality	Improve air quality in nonattainment areas.
Intchnng. Impts.	Interchange Improvements – improvements to the junction between two or more Roadways, typically including a grade separation and ramps.
Inters. Impvts.	Intersection improvements – improvements to the junction between two or more Roadways that meet at grade.
IRP	Interstate Rehabilitation Program – Approved by a special election (November 2011) – allowed the Highway Commission to issue up to \$575 million in GARVEE Bonds to help finance repairs and improvements to Interstates.
JATS	Jonesboro Area Transportation Study – The Metropolitan Planning Organization (MPO) for the urbanized area in Craighead County. (See also MPO.)
JETS	Jonesboro Economical Transit System – provides public transportation for the City of Jonesboro
Local	Local funds / City or County
LRMTP or MTP	Long-Range Metropolitan Transportation Plan – a long range planning horizon of 20-25 years that provides a vision for how to invest in and improve the regional transportation infrastructure.
Major Widening	Widening of an existing roadway to improve capacity or enhance safety.
MATA	Memphis Area Transit Authority – public transportation provider for Memphis, TN
Metroplan	Metroplan is the federally designated Metropolitan Planning Organization (MPO) for central Arkansas. (See also CARTS and MPO.)
Metropolitan Planning Organization	A federally mandated and funded transportation policy making organization that is made up of representatives from local governments and government transportation authorities.
Miscellaneous	Any number of improvements.
MODOT	Missouri Department of Transportation.
MPO	See Metropolitan Planning Organizations.
NARTS	Northwest Arkansas Regional Transportation Study. The Metropolitan Planning Organization (MPO) for all of Washington and Benton Counties. (See also MPO.)
NEPA	National Environmental Policy Act – a federal law that requires agencies that administer federally funded projects to assess environmental effects to their proposed actions prior to constructing highways, roadways, or projects in public land.
New Location	Construction of a roadway on a location not previously developed for vehicular transportation.
NHFP	See information on Federal Funding.
NHPP	See information on Federal Funding.

GLOSSARY OF TERMS, ABBREVIATIONS AND ACRONYMS (continued)

NHS	National Highway System – includes the Interstate Highway System and other roads important to the nation’s economy, defense, and mobility.
Noise Abatement	Improvements to reduce noise pollution to a specific area.
Off System Bridge	See information on Federal Funding.
OJT	See information on Federal Funding.
Operational Improvements	Improves traffic operations on existing roadways.
P.E. or PE	Preliminary Engineering – Includes surveys, environmental analysis, and design.
Partnering Project	A project that has a partnering arrangement between ArDOT and local governments and other state agencies that results in project acceleration.
Passing Lane(s)	Construction of an additional lane or lanes intended for passing on a two-lane roadway.
PBATS	Pine Bluff Area Transportation Study – The Metropolitan Planning Organization (MPO) for the urbanized area in Jefferson County. (See also MPO.)
Planning	Determination of existing and future needs.
Project Development	Combination of preliminary engineering, environmental analysis, design, right-of-way acquisition, and utility relocation activities.
Pvmt.	Pavement
Rail Hwy.	See information on Federal Funding.
Reconstruction	Rebuilding of an existing roadway.
Rehabilitation	Pavement restoration, patching, heat scarifying, etc., of an existing roadway.
ROW Acquisition	Right of Way – acquirement of real property to make way for the construction of a highway project. Real property is a term that is used to describe land, easements, air or access rights, or the rights to control the use of land, such as leases.
RR	Railroad
RR Grade Separation	Construction of a bridge over or under a railroad track(s) at an at-grade crossing.
RTP	See information on Federal Funding.
Safety & Traf. Eng.	Various improvements to enhance safety and/or improve traffic flow.
Sealing	Application of an asphalt seal coat to an existing roadway.
Sel. Secs.	Selected Sections.
SHSP	Strategic Highway Safety Plan – a Federally required statewide-coordinated safety plan for reducing highway fatalities and serious injuries on all public roads.
State	State funds.

GLOSSARY OF TERMS, ABBREVIATIONS AND ACRONYMS (continued)

State Local	State funds, Local funds, or a combination of the two.
STBGP	See information on Federal Funding.
STBGP >200K	See information on Federal Funding.
STIP	Statewide Transportation Improvement Program – a Federally required, financially constrained, four-year or more, list of upcoming statewide transportation projects that identifies the schedule and the funding by Federal Fiscal Year.
Str. & Apprs.	Structures and Approaches – including but not limited to, bridge replacement, grade separation, etc.
System Preservation	Various projects to preserve, rehabilitate, or reconstruct an existing roadway.
TAP	See information on Federal Funding.
TAP >200K	Surface Transportation Block Grant Program / Transportation Alternative funds set aside for area greater than 200,000 population. See information on Federal Funding.
TIP	Transportation Improvement Program – a Federally required, financially constrained, four-year or more, list of upcoming transportation projects that identifies the schedule and the funding by Federal Fiscal Year in a Metropolitan Planning Organization area.
TMA	Transportation Management Area – an area designated by the Secretary of Transportation having an urbanized area population of over 200,000 or upon special request from the Governor and the MPO designated for the area.
Transit	Projects that provide operation assistance or capital assistance such as improving or expanding local public transit systems, including buses, subways, light rail, commuter rail, or trolleys.
TUTS	Texarkana Urban Transportation Study – The Metropolitan Planning Organization (MPO) for the urbanized area in Miller County. (See also MPO.)
U of A	University of Arkansas
Utility	Adjustment and/or relocation of utilities.
Widening	Widening an existing roadway – one or more lanes.
WMATS	West Memphis-Marion Area Transportation Study – the Metropolitan Planning Organization (MPO) for the urbanized area in Crittenden County. (See also MPO.)

INFORMATION ON FEDERAL FUNDING

Federal funding for projects includes:

NATIONAL HIGHWAY PERFORMANCE PROGRAM (NHPP)

In general, the NHPP provides support for the condition and performance of the National Highway System (NHS), and to ensure that investments of Federal-aid funds in highway construction are directed to support progress toward the achievement of performance targets established in a State's asset management plan. Restoration work on all State Highway System bridges is also an eligible use of these funds.

NATIONAL HIGHWAY FREIGHT PROGRAM (NHFP)

The NHFP is for projects that will improve the efficient movement of freight on the National Highway Freight Network (NHFN) and support several goals including –

- Investment in infrastructure and operational improvements that strengthen economic competitiveness, reduce congestion, reduce the cost of freight transportation, improve reliability, and increase productivity;
- Improving the safety, security, efficiency, and resiliency of freight transportation in rural and urban areas;
- Improving the state of good repair of the NHFN;
- Using innovation and advanced technology to improve NHFN safety, efficiency, and reliability;
- Improving the efficiency and productivity of the NHFN;
- Improving State flexibility to support multi-State corridor planning and address highway freight connectivity; and
- Reducing the environmental impacts of freight movement on the NHFN.

SURFACE TRANSPORTATION BLOCK GRANT PROGRAM (STBGP)

The STBGP provides flexible funding that may be used by States for projects to preserve and improve the conditions and performance on any State highway or bridge.

A portion of these funds are set aside and sub-allocated as follows:

- Set-asides
Transportation Alternatives and Recreational Trails Projects (TAP or RTP), which provides funding for a variety of smaller-scale transportation projects such as pedestrian and bicycle facilities, recreational trails, safe routes to school projects, community improvements such as historic preservation and vegetation management, and environmental mitigation related to storm water and habitat connectivity. Bridges not on Federal-aid highways (Off System Bridge)
- Sub-allocation
A percentage of a State's STBG apportionment (after set-asides) is to be obligated in the following areas in proportion to their relative shares of the State's population:
 - ✓ Urbanized areas with populations greater than 200,000 (STBGP>200K)
 - ✓ Areas with populations greater than 5,000 but not more than 200,000 (STBGP)
 - ✓ Areas with populations of 5,000 or less (STBGP)

HIGHWAY SAFETY IMPROVEMENT PROGRAM (HSIP)

The HSIP funds are eligible for projects that will achieve a significant reduction in traffic fatalities and serious injuries on all public roads, including non-State-owned public roads and roads on tribal lands. The HSIP requires a data-driven, strategic approach to improving highway safety on all public roads that focuses on performance. A portion of these funds are set aside as follows:

- Set-asides
Railway-Highway Crossings Program (Rail Hwy) which provides funding for safety improvements to reduce the number of fatalities, injuries, and crashes at public railway-highway grade crossings.

HIGHWAY INFRASTRUCTURE (HIP)

The HIP funds are eligible for construction of highways, bridges, and tunnels. The funds may also be obligated for the elimination of hazards and the installation of protective devices at railway-highway crossings. These funds cannot be used on roads functionally classified as minor collectors.

- Sub-allocation
A percentage of a State's HIP apportionment is to be obligated in the following areas in proportion to their relative shares of the State's population:
 - ✓ Urbanized area with population greater than 200,000 (HIP>200K)
 - ✓ Areas with population greater than 5,000 but no more than 200,000 (HIP5K<200K)
 - ✓ Areas with population of 5,000 or less (HIP,5K)

CONGESTION MITIGATION AND AIR QUALITY IMPROVEMENT PROGRAM (CMAQ)

The CMAQ program provides a flexible funding source to State and local governments for transportation projects and programs to help meet the requirements of the Clean Air Act. Funding is available to reduce congestion and improve air quality for area that do not meet National Ambient Air Quality Standards for ozone, carbon monoxide, or particulate matter (nonattainment areas) and for former nonattainment areas that are now in compliance (maintenance area).

- Sub-allocation
CMAQ Program funds dedicated to West Memphis, AR (CMAQ-AQ) for projects to the attainment or maintenance of a national ambient air quality standard.

CMAQ Program flexible funds (CMAQ Flex) that may be used by States for projects to preserve and improve the conditions and performance on and State highway or bridge.

FEDERAL LANDS ACCESS PROGRAM (FLAP)

The FLAP provides funds for projects on Federal Lands Access Transportation Facilities that are located on or adjacent to, or that provide access to Federal lands. This is a competitive grant program.

FERRY BOAT PROGRAM (Ferry Boat)

The Ferry Boat Program (Ferry Boat) provides funds for the construction of ferry boats and ferry boat terminal facilities. This is a competitive grant program.

DISADVANTAGED BUSINESS ENTERPRISE SUPPORTIVE SERVICES PROGRAM (DBE)

The DBE Program primary purpose is to provide training, assistance, and services to minority, disadvantaged, and women business enterprises so as to increase their activity in the program, and to facilitate the firms' development into viable, self-sufficient organizations capable of competing for, and performing on federally assisted highway projects.

ON THE JOB TRAINING PROGRAM (OJT)

The OJT Program is funded by the Workforce Innovation and Opportunity Act and allows States to hire and train skilled workers and get reimbursed for those efforts.

INFORMATION ON GENERIC PROJECTS

IRP Debt Service

Conversion of Advanced Construction NHPP funds to repay the bonds issued for the 2011 Interstate Rehabilitation Program. The 2011 Interstate Rehabilitation Program was approved by Arkansas voters in November 2011. Under this program, the Commission had the authority to issue up to \$575 million in bonds for interstate rehabilitation to be partially repaid using NHPP funds.

Various Bridge Preservation

Painting structural steel, adding, or replacing guard rail at bridge ends, improvements to columns to control scour, and bridge deck restoration.

Various Off-System Bridge Rehabilitation and Replacement on City Streets

Replacement or rehabilitation of eligible bridges on city streets.

Bridge Inspection / inspection Equipment

Routine inspection of bridges and purchases of bridge inspection equipment.

Railroad Crossing Protective Devices / Surfacing / Hazard Elimination

Safety improvements to reduce the number of fatalities, injuries, and crashes at public railway-highway grade crossings.

Various Transportation Alternative Projects

Funded with set-aside of STBGP program funding for transportation alternatives (TAP). Projects in this category will be approved through a competitive selection process with the solicitation of applications. These set-aside funds include a variety of smaller-scale transportation projects such as pedestrian and bicycle facilities, recreational trails, safe routes to school projects, community improvements such as historic preservation and vegetation management, and environmental mitigation related to storm water and habitat connectivity.

Various Trail Projects

Projects in this category will be approved through a competitive selection process with the solicitation of applications. Eligible projects include motorized and non-motorized trails and trail facilities.

Various Resurfacing / Restoration / Rehabilitation / Reconstruction / Bridge Replacement / Bridge Rehabilitation on County Roads

Federal funds dedicated for pavement and bridge improvement projects on the County road system.

Various Bridge Replacement / Bridge Rehabilitation on County Roads

Federal funds dedicated for bridge improvement projects for Off System Bridges on the County Road System.

PE / Right-of-way / Utilities / Construction Engineering

Project development and construction management activities including surveys, environmental analysis, design, right-of-way acquisition, relocating utilities and providing construction inspection once a project is let to contract.

Various Wildflower Programs

Funds to support ARDOT's beautification program of planting wildflowers along the State Highway System.

Motor Fuel Enforcement Activities

Funding for ARDOT's Internal Audit Motor Fuel Tax Section to offset the cost of International Fuel Tax Agreement audits and Motor Fuel Tax audits.

Various Statewide Safety Improvements

Improvements consistent with the state Strategic Highway Safety Plan (SHSP) that correct or improve a hazardous road location or feature or address a highway safety problem.

Statewide Pavement Markings and Signing Projects

Upgrading pavement markings and signs to meet desired levels of retro reflectivity for driver safety.

Workforce Training and Development

Various courses and training for workforce development and educational activities for ARDOT employees.

Various Pavement Preservation Projects

Projects to improve ride quality and extend the life of pavements on the State Highway System. Projects may increase lane widths and/or shoulder widths to current standards.

Various Signals and Intersection Improvements

Signalization, signal upgrades, signal coordination, and the addition of turn lanes to improve the flow of traffic through intersections.

Various Sealing Projects

May include fog seals, chip seals, high friction surface treatments or other surface treatments on the State Highway System to improve friction and long-term performance of the pavement.

Various Federal Lands Access Program (FLAP) Projects

Improves transportation facilities that are located on or adjacent to, or that provide access to Federal lands. This is a competitive grant program.

Various Ferry Boat Projects

Restoration or construction of ferry boats and/or ferry terminal facilities. This is a competitive grant program.

Disadvantaged Business Enterprise (DBE) Supportive Services

Provides training, assistance, and services to minority, disadvantaged, and women business enterprises to facilitate the firm's development into a viable, self-sufficient organizations capable of competing and performing on federally assisted highway projects.

On-the-Job Training (OJT) Supportive Services

Hire and train workers in various highway construction skills.

APPLICABLE GUIDANCE

Eligible activities for all programs can be found in the "FAST ACT" guidance at the following website: <http://www.fhwa.dot.gov/fastact/factsheets/>

STIP INTRODUCTION

The Statewide Transportation Improvement Program (STIP) for Federal Fiscal Years 2023 through 2026 has been prepared by the Arkansas State Highway Commission in response to 23 U.S.C. 135 – Statewide Planning, as continued by the Fixing America’s Surface Transportation (FAST) Act.

Authorization for the listed projects may be requested for any phase of development (i.e., preliminary engineering, right of way, utilities, or construction) during Fiscal Years 2023 through 2026. Authorization for pre-construction phases may be requested in advance of the year a project is scheduled for construction to assure the project can be advertised and let to contract as scheduled in this STIP.

Performance Management

The FAST Act includes requirements for the MPO to establish and use a “performance-based approach to transportation decision making” that support FAST Act national goals. The PBATS MPO continuously coordinates with ArDOT on the establishment of a “performance-based approach” to transportation planning and the establishment of MPO “performance measures and performance targets” that support state DOT performance measures and targets.

In accordance with 23 CFR 450.218, ArDOT has developed a statewide transportation improvement program (STIP) for all areas of the State. Map-21/FAST Act established national performance goals. The STIP shall include, to the maximum extent practicable, a discussion of the anticipated effect of the STIP toward achieving the performance targets identified by the State in the statewide transportation plan or other state performance-based plans(s), linking investment priorities to those performance targets.

The PBATS Policy Board has adopted resolutions in supporting the State’s established performance targets. Below is a description of each of the performance areas and the anticipated effect of the STIP toward achieving the performance targets.

Safety

Arkansas has adopted an ultimate vision of Toward Zero Deaths (TZD) since 2013. With this vision, the Strategic Highway Safety Plan (SHSP) was developed that integrates the four “E’s” – engineering, education, enforcement, and emergency services. It is a performance-based, data-driven, comprehensive plan that establishes statewide goals, objectives, and strategies to address safety in Arkansas. This vision and strategy are consistent with the TZD National Strategy on Highway Safety sponsored by the Federal Highway Administration (FHWA), the National Highway Traffic Safety Administration (NHTSA), the American Association of State Highway and Transportation Officials (AASHTO), and the Governor’s Highway Safety Association (GHSA).

ArDOT 2022 State Highway Safety Plan:

[ARDOT_SHSP_2022.pdf](#)

The latest SHSP was developed in 2022, which identified five critical emphasis areas ranging from driver behavior, special and vulnerable road users to infrastructure and operational improvements. Performance goals can be found in the **SHSP** for the following performance measures:

- Number of fatalities
- Fatality rate
- Number of serious injuries
- Serious injury rate
- Number of non-motorized fatalities and serious injuries

In addition, the Department develops annual performance targets to support the SHSP goals in accordance with 23 U.S.C. 150. The targets are developed in coordination with the Arkansas State Police – Highway Safety Office, Metropolitan Planning Organizations (MPOs), and other stakeholders. They are submitted to FHWA in the Highway Safety Improvement Program (HSIP) report by August 31 each year.

Relevant primary emphasis areas under Infrastructure and Operational Improvements include roadway departure, intersections, work zones, railroad crossings as well as incident management and data collection and analysis. Safety projects included in the STIP/TIP were identified to address the critical and primary emphasis areas in support of the SHSP performance goals. They were identified through a data-driven process and are in conformance with the HSIP requirements. The data-driven process includes:

- Evaluation of the safety performance of an area
- Identification of appropriate countermeasures that would address one or more SHSP primary emphasis areas
- Determination of benefits vs. cost

These projects are intended to have a positive effect on the State's highway safety performance and moving toward achieving the performance goals identified in the SHSP. The evaluation of safety effectiveness for these projects is conducted annually through the annual HSIP report.

Transit

The PBATS MPO is required, through Transit Asset Management Plans (TAMS), to coordinate with transit providers (Pine Bluff Transit) to set performance targets and integrate those performance targets and performance plans into its planning documents.

FTA grant recipients are required to utilize performance-driven, outcome-based programs. As parts of this approach, recipients are required to link investment priorities from the STIP/TIP to achieve performance targets based upon the grant recipient's TAM plan.

Infrastructure Condition

In order to manage the State Highway System, ARDOT has developed the Transportation Asset Management Plan (TAMP) compliant with 23 CFR 515 with

the goal of maintaining the system in the best possible condition for the given amount of funding available. The TAMP is a risk-based document and describes the inventory and condition of Arkansas highways and bridges located on the National Highway System (NHS). It also describes how ARDOT is managing these assets using transportation asset management principles. Using lifecycle information contained in the TAMP assists ARDOT in identifying the correct projects at the correct times to reduce the overall cost of State assets, while maintaining a safe and efficient system.

Federally mandated performance measures are:

- Percent of Interstate pavements in Good condition
- Percent of Interstate pavements in Poor condition
- Percent of non-Interstate NHS pavements in Good condition
- Percent of non-Interstate NHS pavements in Poor condition
- Percent of NHS bridges by deck area classified as Good condition
- Percent of NHS bridges by deck area classified as Poor condition

A number of jobs in the STIP/TIP, in accordance with the TAMP, will implement system preservation, reconstruction, or structures and approaches (bridge replacement) type of work. These projects are intended to maintain highway assets in the state-of-good-repair and achieve performance targets.

Preservation projects are implemented expeditiously as needs are identified and are aided by additional funding made available through various state initiatives. The condition of the State highway system is reported annually to FHWA in the Highway Performance Monitoring System (HPMS).

System Reliability and CMAQ

System reliability on the Interstate and non-Interstate NHS is assessed using FHWA's National Performance Management Research Data Set (NPMRDS) for travel time reliability and freight movement. **Travel time reliability** is defined as the ratio of the longer travel time (80th percentile) to a normal travel time (50th percentile). Roadway segments that have a travel time reliability greater than 1.5 are considered unreliable. **Freight reliability** is based on the truck travel time reliability index that is defined as the 95th percentile truck travel time divided by the 50th percentile truck travel time.

Federally mandated performance measures are:

- Percent of person-miles traveled on the Interstate that are reliable
- Percent of person-miles traveled on the non-Interstate NHS that are reliable 18
- Truck travel time reliability on the Interstate System
- Other measures are not applicable in the PBATS MPA

The Connecting Arkansas Program (CAP) has been the primary vehicle to increase the reliability of the State highway system. Many of the unreliable segments across the State will be addressed with the completion of CAP. The State highways are monitored continuously to ensure a safe and efficient transportation system is provided. As needs arise, projects are identified and implemented. System performance is reported annually to FHWA through the Highway Performance Monitoring System (HPMS). Arkansas State Freight Plan Executive Summary: [Statewide Planning - Arkansas Department of Transportation \(ardot.gov\)](https://www.ardot.gov/Statewide-Planning)
 Source: ARDOT FFY 2023-2026 STIP

PERFORMANCE MEASURE TARGETS

Calendar Year 2023 Targets

Methodology - These targets has been set using the methodology adopted by the safety stakeholders which is the average of five values for 5-year moving averages of 2017 to 2021.

Safety

Safety Performance Measures	2022 Targets	2023 Targets	Change
Number of Fatalities	631.5	704.9	11.6%
Rate of Fatalities	1.808	1.895	4.8%
Number of Serious Injuries	2,996.9	2,790.1	-6.9%
Rate of Serious Injuries	8.609	7.815	-9.2%
Number of Non-Motorized	229.2	274.4	19.7%

The PBATS Policy Board adopted Resolution #2022-1 supporting ArDOT’s Safety Plan 2022 mid-term targets on February 24, 2022.

Infrastructure Condition

Pavements Performance Targets (IRI only)	Baseline 2018	2-year 2020	4-year 2022
Percent of Interstate pavements in Good condition	77%	78%	79%
Percent of Interstate pavements in Poor condition	4%	4%	5%
Percent of non-Interstate NHS pavements in Good condition	52%	56%	59%
Percent of non-Interstate NHS pavements in Poor condition	8%	8%	7%
*Condition rating based on ArDOT's 2017 HPMS pavement dataset – IRI Only ^Condition rating based on ArDOT's 2019 HPMS pavement dataset – IRI Only # Condition rating based on ArDOT's 2021 projected pavement dataset – IRI Only			

Pavements Performance Targets (Full Distress)	Baseline 2018	2-year 2020	4-year 2022
Percent of Interstate pavements in Good condition	70%	71%	72%
Percent of Interstate pavements in Poor condition	2%	2%	5%
Percent of non-Interstate NHS pavements in Good condition	28%	36%	40%
Percent of non-Interstate NHS pavements in Poor condition	4%	4%	4%
*Condition rating based on ArDOT's 2017 HPMS pavement dataset – Full Distress ^Condition rating based on ArDOT's 2019 HPMS pavement dataset – Full Distress # Condition rating based on ArDOT's 2021 projected pavement dataset – Full Distress			

Bridge Performance Targets	Baseline 2018	2- year 2020	4- year 2022
Percent of NHS bridges by deck area classified as Good condition	50.3%	44.5%	42.0%
Percent of NHS bridges by deck area classified as Poor condition	3.9%	3.6%	6%

The PBATS Policy Board adopted Resolution #2021-1 supporting ArDOT's Pavement and Bridge 2022 Performance targets on March 19, 2021.

System Reliability

Travel Time Reliability Performance Targets	Baseline 2018	2- year 2020	4- year 2022
Percent of Person-Miles Traveled on the Interstate that are Reliable	95%	97%	93%
Percent of Person-Miles Traveled on the non-Interstate NHS that are Reliable	96%	96%	92%
Truck Travel Time Reliability on the Interstate System	1.21	1.21	1.40

The PBATS Policy Board adopted Resolution #2021-2 supporting ArDOT's Travel Time Reliability 2022 Performance targets on March 19, 2021.

CMAQ

The PBATS MPA does not fall under CMAQ guidelines.

LOCAL PROJECT SELECTION PROCESS

The TIP is consistent with the PBATS 2045 Metropolitan Transportation Plan and was submitted to the Southeast Arkansas Regional Planning Commission MPO for approval. Full funding is anticipated to be available for each project within the time period contemplated for completion of the project.

In accordance with Section 134 of Title 23 U.S.C. Chapter 1, as amended, the MPO operates under the following Project Selection Procedures:

1. The approved Transportation Improvement Program shall be utilized for programming projects within the PBATS Study Area.
2. Any project listed in the first year of the approved Transportation Improvement Program shall be considered the highest priority and may be implemented as soon as plans are completed, and funds are appropriated. Projects in the second, third, and fourth years of the TIP are considered to have second, third, and fourth priorities, respectively.
3. If a project in the first year cannot be accomplished, then a project from the second year will be selected and those projects may be initiated as plans are completed and funds are appropriated.

These procedures were developed cooperatively between the Arkansas Department of Transportation and the MPO and were approved with this document.

FTA Sections 5307, 5310, 5311, and 5339 funds:

The public participation procedures outlined in the SARPC's Public Participation Plan (PPP) serve as the public participation process required for the development of transit projects as per FTA Circular 9030. Specifically, the public participation procedures outlined in the PPP will serve to satisfy the Program of Projects (POP) requirements of the Section 5307 Urbanized Area Formula Grant Program for Pine Bluff Transit.

Arkansas receives an annual apportionment for the Federal Transit Administration for the 49 U.S.C. Chapter 53, Sections 5307 (FAST Act Section 3004), Section 5310 (FAST Act Section 3006), Section 5311 (FAST Act Section 3007) and Section 5339 (FAST Act Section 3017). These are listed as Statewide Projects in the Transportation Improvement Program (TIP). The Arkansas Department of Transportation (ArDOT) solicits a Statewide annual application process from transit providers in both urbanized and rural areas. Based on submitted applications, applicant's eligibility, project's eligibility, rating system and available funds, the ArDOT approves projects for funding. The ArDOT approved projects are submitted to the Federal Transit Administration (FTA) for their approval. Once approved by the FTA, agencies throughout the state are informed of grant awards and contracts are executed.

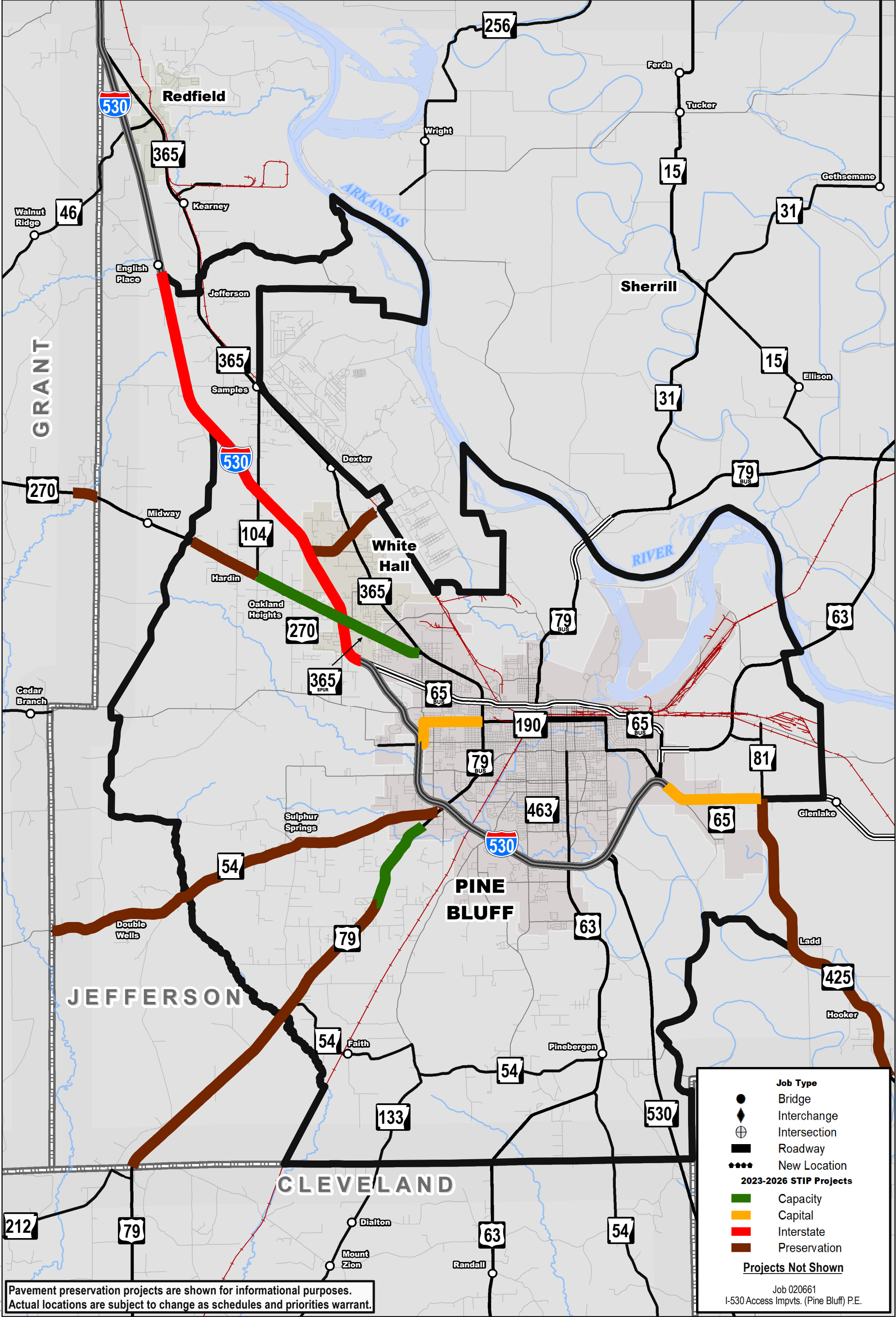
Funds for highway and transit Statewide Projects are total funds available throughout the State. Projects may be selected within the PBATS area and are at the discretion of ArDOT.

**PINE BLUFF AREA TRANSPORTATION
STUDY
TRANSPORTATION IMPROVEMENT
PROGRAM
FY 2023 – 2026**

**HIGHWAY AND TRANSIT
PROJECTS**

Pine Bluff Area Transportation Study 2023-2026 STIP

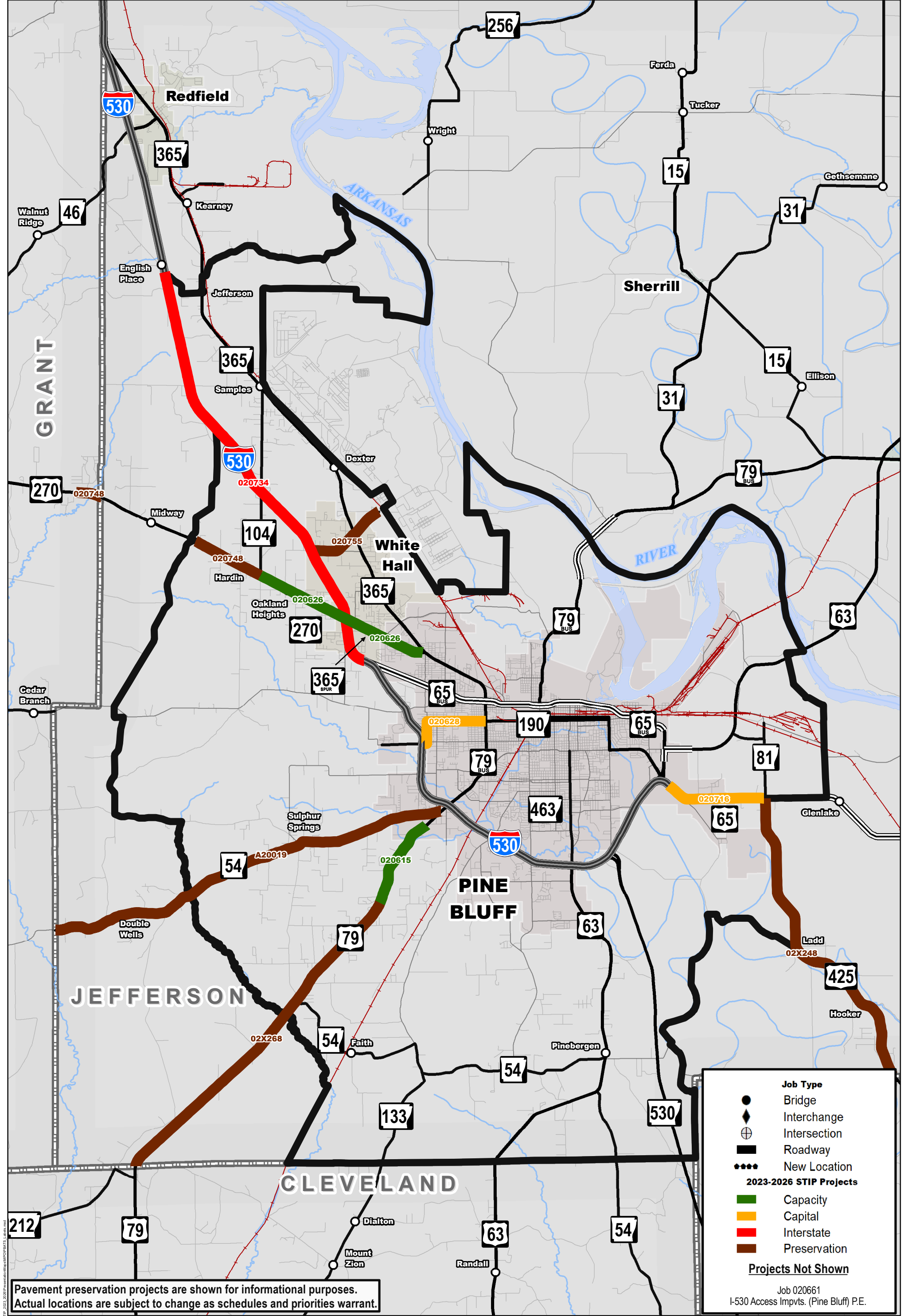
Job Number	Job Name	District	County	Route	Section	Length
020615	Pine Bluff – South (S)	2	Jefferson	79	9	2.36
020626	Hwy. 104 – Hwy. 365 (Pine Bluff) (S)	2	Jefferson	270 & 365S	11/14S	4.76
020628	I-530 – Hwy. 79B (Franklin St. & 6th Ave.) (Pine Bluff) (S)	2	Jefferson	190	5	2.08
020661	I-530 Access Impvts. (Pine Bluff) P.E.	2	Jefferson	I-530	5	-
020716	I-530 – Hwy. 425 (Minor Widening) (Pine Bluff) (S)	2	Jefferson	65	15	2.51
020734	Stagecoach Rd. – Hwy. 65B (S)	2	Jefferson	I-530	5	11.28
020748	Hurricane Creek – Hwy. 104 (Sel. Secs.) (S)	2	Grant & Jefferson	270	10/11	5.47
020755	I-530 – Baldwin Rd. (White Hall) (S)	2	Jefferson	256	1	2.29
02X248	Lincoln Co. Line – Hwy. 65 (S)	2	Jefferson	425	7	8.33
02X268	Cleveland City – Pinewood (S)	2	Jefferson	79	9	9.21
A20019	Hwy. 79 – Grant Co. Line (S)	2	Jefferson	54	10	10.39



Pavement preservation projects are shown for informational purposes. Actual locations are subject to change as schedules and priorities warrant.

2023-2026 Statewide Transportation Improvement Program

Pine Bluff Area Transportation Study



Pavement preservation projects are shown for informational purposes. Actual locations are subject to change as schedules and priorities warrant.

Job Type

- Bridge
- ◆ Interchange
- ⊕ Intersection
- ▬ Roadway
- New Location

2023-2026 STIP Projects

- Capacity
- Capital
- Interstate
- Preservation

Projects Not Shown

Job 020661
I-530 Access Impvts. (Pine Bluff) P.E.

2023-2026 Statewide Transportation Improvement Program

Pine Bluff Area Transportation Study

0 1 2 Miles

AR DOT
ARKANSAS DEPARTMENT OF TRANSPORTATION

PM: PS: db43952: 8/17/2022

2023-2026 PBATS DRAFT TIP

JOB	COUNTY	ROUTE	TERMINI	LENGTH	TYPE WORK	ESTIMATED COST Funding Breakdown (in thousands)	AGENCY CARRYING OUT THE PROJECT	FFY	MPO
020661	Jefferson	I-530	I-530 Access Impvts. (Pine Bluff) P.E.	-	Project Development	5,000 - TOTAL 4,000 - NHPP 1,000 - State	State	2024	PBATS
Additional funds to be determined through partnering to provide access improvements for potential economic development.									
020716	Jefferson	65	I-530 – Hwy. 425 (Minor Widening) (Pine Bluff) (S)	2.51	Shoulder Widening	2,400 - TOTAL 1,920 - NHPP 480 - State	State	2023	PBATS
020615	Jefferson	79	Pine Bluff – South (S)	2.36	Major Widening	12,000 - TOTAL 9,600 - NHPP 2,400 - State	State	2024	PBATS
020628	Jefferson	190	I-530 – Hwy. 79B (Franklin St. & 6th Ave.) (Pine Bluff) (S)	2.08	Minor Widening	5,600 - TOTAL 4,480 - STBGP 1,120 - State	State	2023	PBATS
Partnering project. City of Pine Bluff to assume ownership of Highway 190 through town upon completion of Jobs 020628 and 020588.									
020626	Jefferson	270 & 365S	Hwy. 104 – Hwy. 365 (Pine Bluff & White Hall) (S)	4.76	Major Widening	23,500 - TOTAL 17,692 - NHPP 1,108 - Earmark 4,700 - State	State	2023	PBATS
XX2023-01			IRP Debt Service	-	Miscellaneous	50,000 - TOTAL 50,000 - NHPP	State	2023	All
XX2023-02			Various Bridge Preservation	-	System Preservation	18,000 - TOTAL 13,400 - NHPP 1,000 - BFP (Off System) 3,600 - State	State	2023	All
XX2023-04			Bridge Inspection / Inspection Equipment	-	Miscellaneous	4,000 - TOTAL 2,400 - STBGP 800 - BFP (Off System) 800 - State/Local	State	2023	All
XX2023-05			RR Xing Protect Devices / Surfacing / Hazard Elim	-	Safety Improvements	2,867 - TOTAL 2,867 - Rail Hwy	State/RR	2023	All
XX2023-06			Various Transportation Alternative Projects	-	Miscellaneous	18,356 - TOTAL 14,685 - TAP 3,671 - Local	Local	2023	All

2023-2026 PBATS DRAFT TIP

JOB	COUNTY	ROUTE	TERMINI	LENGTH	TYPE WORK	ESTIMATED COST Funding Breakdown (in thousands)	AGENCY CARRYING OUT THE PROJECT	FFY	MPO
XX2023-07			Various Trail Projects	-	Miscellaneous	1,718 - TOTAL 1,374 - RTP 344 - Local	Local	2023	All
XX2023-08			Various Resurf / Restore / Rehab / Recon on County Roads	-	4-R Strs. & Apprs.	7,459 - TOTAL 5,967 - STBGP 1,492 - Local	State	2023	All
XX2023-09			Various Bridge Rehab / Replacement on City Streets / County Roads	-	Strs. & Apprs.	4,375 - TOTAL 2,700 - Off-System Bridge 1,000 - BFP (Off System) 675 - Local	State	2023	All
XX2023-10			PE / Right-of-Way / Utilities / CENG	-	Project Development	20,000 - TOTAL 8,000 - NHPP 600 - NHFP 2,000 - HSIP 150 - Rail Hwy 4,815 - STBGP 435 - CMAQ Flex 4,000 - State/Local	State	2023	All
Funding in this category may be used for the development of any project within the 2023-2026 STIP.									
XX2023-11			Various Wildflower Programs	-	Miscellaneous	30 - TOTAL 24 - STBGP 6 - State	State	2023	All
XX2023-12			Motor Fuel Enforcement Activities	-	Miscellaneous	20 - TOTAL 20 - STBGP	State	2023	All
XX2023-13			Various Statewide Safety Improvements	-	Safety Improvements	28,620 - TOTAL 25,758 - HSIP 2,862 - State	State	2023	All
XX2023-14			Statewide Pavement Markings & Signing Projects	-	System Preservation	12,000 - TOTAL 5,100 - NHPP 1,000 - HSIP 3,500 - STBGP 2,400 - State	State	2023	All
XX2023-15			Workforce Training and Development	-	Miscellaneous	2,000 - TOTAL 2,000 - Off-System Bridge	State	2023	All

2023-2026 PBATS DRAFT TIP

JOB	COUNTY	ROUTE	TERMINI	LENGTH	TYPE WORK	ESTIMATED COST Funding Breakdown (in thousands)	AGENCY CARRYING OUT THE PROJECT	FFY	MPO
XX2023-16			Various Pavement Preservation Projects	-	System Preservation	172,577 - TOTAL 22,761 - NHPP 1,000 - HSIP 26,471 - STBGP 24,380 - Amendment 101 2,765 - State 95,200 - Act 416	State	2023	All
XX2023-17			Various Signal and Intersection Improvements	-	Intersection Improvements	625 - TOTAL 500 - STBGP 125 - State/Local	State	2023	All
Includes all MPOs with the exception inside the urbanized areas of CARTS, NARTS & WMATS.									
XX2023-18			Various Sealing Projects	-	System Preservation	15,000 - TOTAL 4,000 - NHPP 8,000 - STBGP 3,000 - Act 416	State	2023	All
XX2023-19			Various Federal Lands Projects	-	Miscellaneous	9,355 - TOTAL 3,350 - FLAP 1,625 - FLTP 3,540 - ERFO 840 - State/Local	Federal Lands/State/ Local	2023	All
Funding for the category is detailed in Appendix B.									
XX2023-20			Various Ferry Boat Program Projects	-	Miscellaneous	125 - TOTAL 100 - Ferry Boat 25 - State	State	2023	All
XX2023-21			Disadvantaged Business Enterprises (DBE) Supportive Services	-	Miscellaneous	150 - TOTAL 150 - DBE	State	2023	All
Funding amount is approximate.									
XX2023-22			On-the-Job Training (OJT) Supportive Services	-	Miscellaneous	125 - TOTAL 100 - OJT 25 - State	State	2023	All
Funding amount is approximate.									
XX2023-23			Various Electric Vehicle Infrastructure Projects	-	Miscellaneous	14,410 - TOTAL 11,528 - NEVFP 2,882 - State	State	2023	All
XX2023-24			Various Intelligent Transportation System (ITS) Projects	-	ITS Improvements	8,671 - TOTAL 6,937 - CRP Flex 1,734 - State	State	2023	All

2023-2026 PBATS DRAFT TIP

JOB	COUNTY	ROUTE	TERMINI	LENGTH	TYPE WORK	ESTIMATED COST Funding Breakdown (in thousands)	AGENCY CARRYING OUT THE PROJECT	FFY	MPO
XX2023-25			Various Transportation Resiliency Projects	-	Miscellaneous	13,360 - TOTAL 500 - STBGP 10,188 - PROTECT 2,672 - State	State	2023	All
XX2024-01			IRP Debt Service	-	Miscellaneous	50,000 - TOTAL 50,000 - NHPP	State	2024	All
XX2024-02			Various Bridge Preservation	-	System Preservation	18,000 - TOTAL 12,400 - NHPP 2,000 - BFP (Off System) 3,600 - State	State	2024	All
XX2024-04			Bridge Inspection / Inspection Equipment	-	Miscellaneous	4,000 - TOTAL 2,400 - STBGP 800 - BFP (Off System) 800 - State/Local	State	2024	All
XX2024-05			RR Xing Protect Devices / Surfacing / Hazard Elim	-	Safety Improvements	2,883 - TOTAL 2,883 - Rail Hwy	State/RR	2024	All
XX2024-06			Various Transportation Alternative Projects	-	Miscellaneous	16,305 - TOTAL 13,044 - TAP 3,261 - Local	Local	2024	All
XX2024-07			Various Trail Projects	-	Miscellaneous	1,868 - TOTAL 1,494 - RTP 374 - Local	Local	2024	All
XX2024-08			Various Resurf / Restore / Rehab / Recon on County Roads	-	4-R Strs. & Apprs.	7,459 - TOTAL 5,967 - STBGP 1,492 - Local	State	2024	All
XX2024-09			Various Bridge Rehab / Replacement on City Streets / County Roads	-	Strs. & Apprs.	4,375 - TOTAL 2,700 - Off-System Bridge 1,000 - BFP (Off System) 675 - Local	State	2024	All

2023-2026 PBATS DRAFT TIP

JOB	COUNTY	ROUTE	TERMINI	LENGTH	TYPE WORK	ESTIMATED COST Funding Breakdown (in thousands)	AGENCY CARRYING OUT THE PROJECT	FFY	MPO
XX2024-10			PE / Right-of-Way / Utilities / CENG	-	Project Development	20,000 - TOTAL 7,007 - NHPP 577 - NHFP 2,000 - HSIP 1,130 - Rail Hwy 5,000 - STBGP 286 - CMAQ Flex 4,000 - State/Local	State	2024	All
Funding in this category may be used for the development of any project within the 2023-2026 STIP.									
XX2024-11			Various Wildflower Programs	-	Miscellaneous	30 - TOTAL 24 - STBGP 6 - State	State	2024	All
XX2024-12			Motor Fuel Enforcement Activities	-	Miscellaneous	20 - TOTAL 20 - STBGP	State	2024	All
XX2024-13			Various Statewide Safety Improvements	-	Safety Improvements	36,491 - TOTAL 32,842 - HSIP 3,649 - State	State	2024	All
XX2024-14			Statewide Pavement Markings & Signing Projects	-	System Preservation	12,000 - TOTAL 5,100 - NHPP 1,000 - HSIP 3,500 - STBGP 2,400 - State	State	2024	All
XX2024-15			Workforce Training and Development	-	Miscellaneous	2,000 - TOTAL 2,000 - Off-System Bridge	State	2024	All
XX2024-16			Various Pavement Preservation Projects	-	System Preservation	229,302 - TOTAL 3,174 - NHPP 1,000 - HSIP 6,083 - STBGP 114,039 - Amendment 101 6,126 - State 98,880 - Act 416	State	2024	All
XX2024-17			Various Signal and Intersection Improvements	-	Intersection Improvements	4,563 - TOTAL 3,650 - STBGP 913 - State/Local	State	2024	All

Includes all MPOs with the exception inside the urbanized areas of CARTS, NARTS & WMATS.

2023-2026 PBATS DRAFT TIP

JOB	COUNTY	ROUTE	TERMINI	LENGTH	TYPE WORK	ESTIMATED COST Funding Breakdown (in thousands)	AGENCY CARRYING OUT THE PROJECT	FFY	MPO
XX2024-18			Various Sealing Projects	-	System Preservation	15,000 - TOTAL 4,000 - NHPP 8,000 - STBGP 3,000 - Act 416	State	2024	All
XX2024-19			Various Federal Lands Projects	-	Miscellaneous	11,490 - TOTAL 3,350 - FLAP 7,300 - FLTP 840 - State/Local	Federal Lands/State/ Local	2024	All
Funding for the category is detailed in Appendix B.									
XX2024-20			Various Ferry Boat Program Projects	-	Miscellaneous	125 - TOTAL 100 - Ferry Boat 25 - State	State	2024	All
XX2024-21			Disadvantaged Business Enterprises (DBE) Supportive Services	-	Miscellaneous	150 - TOTAL 150 - DBE	State	2024	All
Funding amount is approximate.									
XX2024-22			On-the-Job Training (OJT) Supportive Services	-	Miscellaneous	125 - TOTAL 100 - OJT 25 - State	State	2024	All
Funding amount is approximate.									
XX2024-23			Various Electric Vehicle Infrastructure Projects	-	Miscellaneous	14,410 - TOTAL 11,528 - NEVFP 2,882 - State	State	2024	All
XX2024-24			Various Intelligent Transportation System (ITS) Projects	-	ITS Improvements	18,025 - TOTAL 14,420 - CRP Flex 3,605 - State	State	2024	All
XX2024-25			Various Transportation Resiliency Projects	-	Miscellaneous	25,345 - TOTAL 500 - STBGP 19,776 - PROTECT 5,069 - State	State	2024	All
XX2025-01			IRP Debt Service	-	Miscellaneous	38,000 - TOTAL 38,000 - NHPP	State	2025	All
XX2025-02			Various Bridge Preservation	-	System Preservation	18,000 - TOTAL 12,400 - NHPP 2,000 - BFP (Off System) 3,600 - State	State	2025	All

2023-2026 PBATS DRAFT TIP

JOB	COUNTY	ROUTE	TERMINI	LENGTH	TYPE WORK	ESTIMATED COST Funding Breakdown (in thousands)	AGENCY CARRYING OUT THE PROJECT	FFY	MPO
XX2025-04			Bridge Inspection / Inspection Equipment	-	Miscellaneous	4,000 - TOTAL 2,400 - STBGP 800 - BFP (Off System) 800 - State/Local	State	2025	All
XX2025-05			RR Xing Protect Devices / Surfacing / Hazard Elim	-	Safety Improvements	2,883 - TOTAL 2,883 - Rail Hwy	State/RR	2025	All
XX2025-06			Various Transportation Alternative Projects	-	Miscellaneous	19,100 - TOTAL 15,280 - TAP 3,820 - Local	Local	2025	All
XX2025-07			Various Trail Projects	-	Miscellaneous	1,868 - TOTAL 1,494 - RTP 374 - Local	Local	2025	All
XX2025-08			Various Resurf / Restore / Rehab / Recon on County Roads	-	4-R Strs. & Apprs.	7,459 - TOTAL 5,967 - STBGP 1,492 - Local	State	2025	All
XX2025-09			Various Bridge Rehab / Replacement on City Streets / County Roads	-	Str. & Apprs.	4,375 - TOTAL 2,700 - Off-System Bridge 1,000 - BFP (Off System) 675 - Local	State	2025	All
XX2025-10			PE / Right-of-Way / Utilities / CENG	-	Project Development	20,000 - TOTAL 7,020 - NHPP 600 - NHFP 2,000 - HSIP 1,130 - Rail Hwy 5,000 - STBGP 250 - CMAQ Flex 4,000 - State/Local	State	2025	All
Funding in this category may be used for the development of any project within the 2023-2026 STIP.									
XX2025-11			Various Wildflower Programs	-	Miscellaneous	30 - TOTAL 24 - STBGP 6 - State	State	2025	All
XX2025-12			Motor Fuel Enforcement Activities	-	Miscellaneous	20 - TOTAL 20 - STBGP	State	2025	All
XX2025-13			Various Statewide Safety Improvements	-	Safety Improvements	41,682 - TOTAL 37,514 - HSIP 4,168 - State	State	2025	All

2023-2026 PBATS DRAFT TIP

JOB	COUNTY	ROUTE	TERMINI	LENGTH	TYPE WORK	ESTIMATED COST Funding Breakdown (in thousands)	AGENCY CARRYING OUT THE PROJECT	FFY	MPO
XX2025-14			Statewide Pavement Markings & Signing Projects	-	System Preservation	12,000 - TOTAL 5,100 - NHPP 1,000 - HSIP 3,500 - STBGP 2,400 - State	State	2025	All
XX2025-15			Workforce Training and Development	-	Miscellaneous	2,000 - TOTAL 2,000 - Off-System Bridge	State	2025	All
XX2025-16			Various Pavement Preservation Projects	-	System Preservation	150,635 - TOTAL 11,316 - NHPP 1,000 - HSIP 27,279 - STBGP 5,860 - Amendment 101 6,180 - State 99,000 - Act 416	State	2025	All
XX2025-17			Various Signal and Intersection Improvements	-	Intersection Improvements	4,125 - TOTAL 3,300 - STBGP 825 - State/Local	State	2025	All
XX2025-18			Various Sealing Projects	-	System Preservation	15,000 - TOTAL 4,000 - NHPP 8,000 - STBGP 3,000 - Act 416	State	2025	All
XX2025-19			Various Federal Lands Projects	-	Miscellaneous	5,775 - TOTAL 3,350 - FLAP 1,585 - FLTP 840 - State/Local	Federal Lands/State/ Local	2025	All
Funding for the category is detailed in Appendix B.									
XX2025-20			Various Ferry Boat Program Projects	-	Miscellaneous	125 - TOTAL 100 - Ferry Boat 25 - State	State	2025	All
XX2025-21			Disadvantaged Business Enterprises (DBE) Supportive Services	-	Miscellaneous	150 - TOTAL 150 - DBE	State	2025	All
Funding amount is approximate.									
XX2025-22			On-the-Job Training (OJT) Supportive Services	-	Miscellaneous	125 - TOTAL 100 - OJT 25 - State	State	2025	All
Funding amount is approximate.									

2023-2026 PBATS DRAFT TIP

JOB	COUNTY	ROUTE	TERMINI	LENGTH	TYPE WORK	ESTIMATED COST Funding Breakdown (in thousands)	AGENCY CARRYING OUT THE PROJECT	FFY	MPO
XX2025-23			Various Electric Vehicle Infrastructure Projects	-	Miscellaneous	14,410 - TOTAL 11,528 - NEVFP 2,882 - State	State	2025	All
XX2025-24			Various Intelligent Transportation System (ITS) Projects	-	ITS Improvements	12,260 - TOTAL 9,808 - CRP Flex 2,452 - State	State	2025	All
XX2025-25			Various Transportation Resiliency Projects	-	Miscellaneous	25,839 - TOTAL 500 - STBGP 20,171 - PROTECT 5,168 - State	State	2025	All
XX2025-26			Various ADA Facility Upgrades	-	Miscellaneous	500 - TOTAL 400 - STBGP 100 - State	State	2025	All
XX2026-01			IRP Debt Service	-	Miscellaneous	17,000 - TOTAL 17,000 - NHPP	State	2026	All
This is the final repayment of the bond program.									
XX2026-02			Various Bridge Preservation	-	System Preservation	18,000 - TOTAL 12,400 - NHPP 2,000 - BFP (Off System) 3,600 - State	State	2026	All
XX2026-04			Bridge Inspection / Inspection Equipment	-	Miscellaneous	4,000 - TOTAL 2,400 - STBGP 800 - BFP (Off System) 800 - State/Local	State	2026	All
XX2026-05			RR Xing Protect Devices / Surfacing / Hazard Elim	-	Project Development	2,883 - TOTAL 2,883 - Rail Hwy	State/RR	2026	All
XX2026-06			Various Transportation Alternative Projects	-	Miscellaneous	19,481 - TOTAL 15,585 - TAP 3,896 - Local	Local	2026	All
XX2026-07			Various Trail Projects	-	Miscellaneous	1,868 - TOTAL 1,494 - RTP 374 - Local	Local	2026	All

2023-2026 PBATS DRAFT TIP

JOB	COUNTY	ROUTE	TERMINI	LENGTH	TYPE WORK	ESTIMATED COST Funding Breakdown (in thousands)	AGENCY CARRYING OUT THE PROJECT	FFY	MPO
XX2026-08			Various Resurf / Restore / Rehab / Recon on County Roads	-	4-R Strs. & Apprs.	7,459 - TOTAL 5,967 - STBGP 1,492 - Local	State	2026	CARTS JATS NARTS PBATS TUTS WMATS FRONTIER
XX2026-09			Various Bridge Rehab / Replacement on City Streets / County Roads	-	Str. & Apprs.	4,375 - TOTAL 2,700 - Off-System Bridge 1,000 - BFP (Off System) 675 - Local	State	2026	All
XX2026-10			PE / Right-of-Way / Utilities / CENG	-	Project Development	20,000 - TOTAL 7,020 - NHPP 600 - NHFP 2,000 - HSIP 1,130 - Rail Hwy 5,000 - STBGP 250 - CMAQ Flex 4,000 - State/Local	State	2026	All
Funding in this category may be used for the development of any project within the 2023-2026 STIP.									
XX2026-11			Various Wildflower Programs	-	Miscellaneous	30 - TOTAL 24 - STBGP 6 - State	State	2026	All
XX2026-12			Motor Fuel Enforcement Activities	-	Miscellaneous	20 - TOTAL 20 - STBGP	State	2026	All
XX2026-13			Various Statewide Safety Improvements	-	Safety Improvements	42,693 - TOTAL 38,424 - HSIP 4,269 - State	State	2026	All
XX2026-14			Statewide Pavement Markings & Signing Projects	-	System Preservation	12,000 - TOTAL 5,100 - NHPP 1,000 - HSIP 3,500 - STBGP 2,400 - State	State	2026	All

2023-2026 PBATS DRAFT TIP

JOB	COUNTY	ROUTE	TERMINI	LENGTH	TYPE WORK	ESTIMATED COST Funding Breakdown (in thousands)	AGENCY CARRYING OUT THE PROJECT	FFY	MPO
XX2026-15			Workforce Training and Development	-	Miscellaneous	2,000 - TOTAL 2,000 - Off-System Bridge	State	2026	CARTS JATS NARTS PBATS TUTS WMATS FRONTIER
XX2026-16			Various Pavement Preservation Projects	-	System Preservation	245,446 - TOTAL 20,572 - NHPP 1,000 - HSIP 4,721 - STBGP 107,620 - Amendment 101 12,533 - State 99,000 - Act 416	State	2026	All
XX2026-17			Various Signal and Intersection Improvements	-	Intersection Improvements	5,000 - TOTAL 4,000 - STBGP 1,000 - State/Local	State	2026	All
XX2026-18			Various Sealing Projects	-	System Preservation	15,000 - TOTAL 4,000 - NHPP 8,000 - STBGP 3,000 - Act 416	State	2026	All
XX2026-19			Various Federal Lands Projects	-	Miscellaneous	7,843 - TOTAL 3,350 - FLAP 3,653 - FLTP 840 - State/Local	Federal Lands/State/ Local	2026	All
Funding for the category is detailed in Appendix B.									
XX2026-20			Various Ferry Boat Program Projects	-	Miscellaneous	125 - TOTAL 100 - Ferry Boat 25 - State	State	2026	All
XX2026-21			Disadvantaged Business Enterprises (DBE) Supportive Services	-	Miscellaneous	150 - TOTAL 150 - DBE	State	2026	All
Funding amount is approximate.									
XX2026-22			On-the-Job Training (OJT) Supportive Services	-	Miscellaneous	125 - TOTAL 100 - OJT 25 - State	State	2026	All
Funding amount is approximate.									

2023-2026 PBATS DRAFT TIP

JOB	COUNTY	ROUTE	TERMINI	LENGTH	TYPE WORK	ESTIMATED COST Funding Breakdown (in thousands)	AGENCY CARRYING OUT THE PROJECT	FFY	MPO
XX2026-23			Various Electric Vehicle Infrastructure Projects	-	Miscellaneous	14,410 - TOTAL 11,528 - NEVFP 2,882 - State	State	2026	All
XX2026-24			Various Intelligent Transportation System (ITS) Projects	-	ITS Improvements	18,754 - TOTAL 15,003 - CRP Flex 3,751 - State	State	2026	All
XX2026-25			Various Transportation Resiliency Projects	-	Miscellaneous	5,944 - TOTAL 500 - STBGP 4,255 - PROTECT 1,189 - State	State	2026	All
XX2026-26			Various ADA Facility Upgrades	-	Miscellaneous	500 - TOTAL 400 - STBGP 100 - State	State	2026	All
113FTA			Bus and Bus Facilities < 200,000 (Capital-Rolling Stock/Support Equipment)	-	Transit	800 - TOTAL 640 - FTA-5339 160 - Local	Local	2023	All
114FTA			Bus and Bus Facilities - Rural Areas (Capital-Rolling Stock/Support Equipment)	-	Transit	4,375 - TOTAL 3,500 - FTA-5339 875 - Local	Local	2023	All
115FTA			Safety Oversight	-	Transit	264 - TOTAL 211 - FTA-5329 53 - Local	Local	2023	All
116FTA			Statewide Planning Program - FTA Planning	-	Transit	146 - TOTAL 117 - FTA-5304 29 - Local	Local	2023	All
117FTA			Seniors and Individuals with Disabilities - State Admin	-	Transit	290 - TOTAL 290 - FTA-5310	Local	2023	All
118FTA			Seniors and Individuals with Disabilities - Rolling Stock	-	Transit	3,300 - TOTAL 2,640 - FTA-5310 660 - Local	Local	2023	All
119FTA			Rural Transit - State Admin	-	Transit	1,395 - TOTAL 1,395 - FTA-5311	Local	2023	All
120FTA			Rural Transit - Project Admin	-	Transit	3,730 - TOTAL 2,984 - FTA-5311 746 - Local	Local	2023	All

2023-2026 PBATS DRAFT TIP

JOB	COUNTY	ROUTE	TERMINI	LENGTH	TYPE WORK	ESTIMATED COST Funding Breakdown (in thousands)	AGENCY CARRYING OUT THE PROJECT	FFY	MPO
121FTA			Rural Transit - Capital - Support Equipment/PM	-	Transit	283 - TOTAL 226 - FTA-5311 57 - Local	Local	2023	All
122FTA			Rural Transit - Capital - Intercity	-	Transit	718 - TOTAL 574 - FTA-5311 144 - Local	Local	2023	All
123FTA			Rural Transit - Operating - Rural	-	Transit	15,096 - TOTAL 7,548 - FTA-5311 7,548 - Local	Local	2023	All
124FTA			Rural Transit - Operating - Intercity	-	Transit	2,390 - TOTAL 1,195 - FTA-5311 1,195 - Local	Local	2023	All
125FTA			Rural Transit - RTAP	-	Transit	350 - TOTAL 350 - FTA-5311	Local	2023	All
127FTA			Capital - Rolling Stock CRRSAA	-	Transit	590 - TOTAL 472 - FTA-5310 118 - Local	Local	2023	All
Amended into 2021-2024 STIP after the Coronavirus Response and Relief Supplemental Appropriations Act (CRRSAA) Program.									
200PTF			Public Transit Trust Fund	-	Transit	5,000 - TOTAL 5,000 - State	Local	2023	All
201TLS			Translease	-	Transit	775 - TOTAL 775 - Local	Local	2023	All
202HUA			HUA	-	Transit	350 - TOTAL 350 - State	Local	2023	All
PBT001			Operating Assistance	-	Transit	880 - TOTAL 440 - FTA-5307 440 - Local	Local	2023	PBATS
PBT002			Capital - Preventive Maintenance	-	Transit	270 - TOTAL 216 - FTA-5307 54 - Local	Local	2023	PBATS
PBT003			Capital - Paratransit Service	-	Transit	162 - TOTAL 130 - FTA-5307 32 - Local	Local	2023	PBATS

2023-2026 PBATS DRAFT TIP

JOB	COUNTY	ROUTE	TERMINI	LENGTH	TYPE WORK	ESTIMATED COST Funding Breakdown (in thousands)	AGENCY CARRYING OUT THE PROJECT	FFY	MPO
PBT004			Capital - Rolling Stock/Support Equipment	-	Transit	126 - TOTAL 101 - FTA-5339 25 - Local	Local	2023	PBATS
PBT005			Capital - Planning	-	Transit	26 - TOTAL 21 - FTA-5307 5 - Local	Local	2023	PBATS
PBT006			Consolidated Planning Grant (MPO)	-	Transit	140 - TOTAL 112 - FTA-5305 28 - Local	Local	2023	PBATS
PBT007			Capital - Rolling Stock-Conway Funds	-	Transit	175 - TOTAL 145 - FTA-5307 30 - Local	Local	2023	PBATS
113FTA			Bus and Bus Facilities < 200,000 (Capital-Rolling Stock/Support Equipment)	-	Transit	800 - TOTAL 640 - FTA-5339 160 - Local	Local	2024	All
114FTA			Bus and Bus Facilities - Rural Areas (Capital-Rolling Stock/Support Equipment)	-	Transit	4,375 - TOTAL 3,500 - FTA-5339 875 - Local	Local	2024	All
115FTA			Safety Oversight	-	Transit	264 - TOTAL 211 - FTA-5329 53 - Local	Local	2024	All
116FTA			Statewide Planning Program - FTA Planning	-	Transit	146 - TOTAL 117 - FTA-5304 29 - Local	Local	2024	All
117FTA			Seniors and Individuals with Disabilities - State Admin	-	Transit	292 - TOTAL 292 - FTA-5310	Local	2024	All
118FTA			Seniors and Individuals with Disabilities - Rolling Stock	-	Transit	3,350 - TOTAL 2,680 - FTA-5310 670 - Local	Local	2024	All
119FTA			Rural Transit - State Admin	-	Transit	1,420 - TOTAL 1,420 - FTA-5311	Local	2024	All
120FTA			Rural Transit - Project Admin	-	Transit	3,800 - TOTAL 3,040 - FTA-5311 760 - Local	Local	2024	All

2023-2026 PBATS DRAFT TIP

JOB	COUNTY	ROUTE	TERMINI	LENGTH	TYPE WORK	ESTIMATED COST Funding Breakdown (in thousands)	AGENCY CARRYING OUT THE PROJECT	FFY	MPO
121FTA			Rural Transit - Capital - Support Equipment/PM	-	Transit	287 - TOTAL 230 - FTA-5311 57 - Local	Local	2024	All
122FTA			Rural Transit - Capital - Intercity	-	Transit	720 - TOTAL 576 - FTA-5311 144 - Local	Local	2024	All
123FTA			Rural Transit - Operating - Rural	-	Transit	15,386 - TOTAL 7,693 - FTA-5311 7,693 - Local	Local	2024	All
124FTA			Rural Transit - Operating - Intercity	-	Transit	2,430 - TOTAL 1,215 - FTA-5311 1,215 - Local	Local	2024	All
125FTA			Rural Transit - RTAP	-	Transit	360 - TOTAL 360 - FTA-5311	Local	2024	All
127FTA			Capital - Rolling Stock CRRSAA	-	Transit	590 - TOTAL 472 - FTA-5310 118 - Local	Local	2024	All
Amended into 2021-2024 STIP after the Coronavirus Response and Relief Supplemental Appropriations Act (CRRSAA) Program.									
200PTF			Public Transit Trust Fund	-	Transit	5,000 - TOTAL 5,000 - State	Local	2024	All
201TLS			Translease	-	Transit	775 - TOTAL 775 - Local	Local	2024	All
202HUA			HUA	-	Transit	350 - TOTAL 350 - State	Local	2024	All
PBT001			Operating Assistance	-	Transit	880 - TOTAL 440 - FTA-5307 440 - Local	Local	2024	PBATS
PBT002			Capital - Preventive Maintenance	-	Transit	272 - TOTAL 218 - FTA-5307 54 - Local	Local	2024	PBATS
PBT003			Capital - Paratransit Service	-	Transit	165 - TOTAL 132 - FTA-5307 33 - Local	Local	2024	PBATS

2023-2026 PBATS DRAFT TIP

JOB	COUNTY	ROUTE	TERMINI	LENGTH	TYPE WORK	ESTIMATED COST Funding Breakdown (in thousands)	AGENCY CARRYING OUT THE PROJECT	FFY	MPO
PBT004			Capital - Rolling Stock/Support Equipment	-	Transit	126 - TOTAL 101 - FTA-5339 25 - Local	Local	2024	PBATS
PBT005			Capital - Planning	-	Transit	26 - TOTAL 21 - FTA-5307 5 - Local	Local	2024	PBATS
PBT006			Consolidated Planning Grant (MPO)	-	Transit	140 - TOTAL 112 - FTA-5305 28 - Local	Local	2024	PBATS
PBT007			Capital - Rolling Stock-Conway Funds	-	Transit	175 - TOTAL 145 - FTA-5307 30 - Local	Local	2024	PBATS
113FTA			Bus and Bus Facilities < 200,000 (Capital-Rolling Stock/Support Equipment)	-	Transit	800 - TOTAL 640 - FTA-5339 160 - Local	Local	2025	All
114FTA			Bus and Bus Facilities - Rural Areas (Capital-Rolling Stock/Support Equipment)	-	Transit	4,425 - TOTAL 3,540 - FTA-5339 885 - Local	Local	2025	All
115FTA			Safety Oversight	-	Transit	270 - TOTAL 216 - FTA-5329 54 - Local	Local	2025	All
116FTA			Statewide Planning Program - FTA Planning	-	Transit	149 - TOTAL 119 - FTA-5304 30 - Local	Local	2025	All
117FTA			Seniors and Individuals with Disabilities - State Admin	-	Transit	294 - TOTAL 294 - FTA-5310	Local	2025	All
118FTA			Seniors and Individuals with Disabilities - Rolling Stock	-	Transit	3,400 - TOTAL 2,720 - FTA-5310 680 - Local	Local	2025	All
119FTA			Rural Transit - State Admin	-	Transit	1,420 - TOTAL 1,420 - FTA-5311	Local	2025	All
120FTA			Rural Transit - Project Admin	-	Transit	3,800 - TOTAL 3,040 - FTA-5311 760 - Local	Local	2025	All

2023-2026 PBATS DRAFT TIP

JOB	COUNTY	ROUTE	TERMINI	LENGTH	TYPE WORK	ESTIMATED COST Funding Breakdown (in thousands)	AGENCY CARRYING OUT THE PROJECT	FFY	MPO
121FTA			Rural Transit - Capital - Support Equipment/PM	-	Transit	291 - TOTAL 233 - FTA-5311 58 - Local	Local	2025	All
122FTA			Rural Transit - Capital - Intercity	-	Transit	722 - TOTAL 578 - FTA-5311 144 - Local	Local	2025	All
123FTA			Rural Transit - Operating - Rural	-	Transit	15,386 - TOTAL 7,693 - FTA-5311 7,693 - Local	Local	2025	All
124FTA			Rural Transit - Operating - Intercity	-	Transit	2,430 - TOTAL 1,215 - FTA-5311 1,215 - Local	Local	2025	All
125FTA			Rural Transit - RTAP	-	Transit	370 - TOTAL 370 - FTA-5311	Local	2025	All
200PTF			Public Transit Trust Fund	-	Transit	5,000 - TOTAL 5,000 - State	Local	2025	All
201TLS			Translease	-	Transit	780 - TOTAL 780 - Local	Local	2025	All
202HUA			HUA	-	Transit	350 - TOTAL 350 - State	Local	2025	All
PBT001			Operating Assistance	-	Transit	894 - TOTAL 447 - FTA-5307 447 - Local	Local	2025	PBATS
PBT002			Capital - Preventive Maintenance	-	Transit	274 - TOTAL 219 - FTA-5307 55 - Local	Local	2025	PBATS
PBT003			Capital - Paratransit Service	-	Transit	167 - TOTAL 134 - FTA-5307 33 - Local	Local	2025	PBATS
PBT004			Capital - Rolling Stock/Support Equipment	-	Transit	128 - TOTAL 102 - FTA-5339 26 - Local	Local	2025	PBATS
PBT005			Capital - Planning	-	Transit	30 - TOTAL 24 - FTA-5307 6 - Local	Local	2025	PBATS

2023-2026 PBATS DRAFT TIP

JOB	COUNTY	ROUTE	TERMINI	LENGTH	TYPE WORK	ESTIMATED COST Funding Breakdown (in thousands)	AGENCY CARRYING OUT THE PROJECT	FFY	MPO
PBT006			Consolidated Planning Grant (MPO)	-	Transit	140 - TOTAL 112 - FTA-5305 28 - Local	Local	2025	PBATS
PBT007			Capital - Rolling Stock-Conway Funds	-	Transit	178 - TOTAL 142 - FTA-5307 36 - Local	Local	2025	PBATS
113FTA			Bus and Bus Facilities < 200,000 (Capital-Rolling Stock/Support Equipment)	-	Transit	800 - TOTAL 640 - FTA-5339 160 - Local	Local	2026	All
114FTA			Bus and Bus Facilities - Rural Areas (Capital-Rolling Stock/Support Equipment)	-	Transit	4,425 - TOTAL 3,540 - FTA-5339 885 - Local	Local	2026	All
115FTA			Safety Oversight	-	Transit	270 - TOTAL 216 - FTA-5329 54 - Local	Local	2026	All
116FTA			Statewide Planning Program - FTA Planning	-	Transit	149 - TOTAL 119 - FTA-5304 30 - Local	Local	2026	All
117FTA			Seniors and Individuals with Disabilities - State Admin	-	Transit	295 - TOTAL 295 - FTA-5310	Local	2026	All
118FTA			Seniors and Individuals with Disabilities - Rolling Stock	-	Transit	3,400 - TOTAL 2,720 - FTA-5310 680 - Local	Local	2026	All
119FTA			Rural Transit - State Admin	-	Transit	1,420 - TOTAL 1,420 - FTA-5311	Local	2026	All
120FTA			Rural Transit - Project Admin	-	Transit	3,900 - TOTAL 3,120 - FTA-5311 780 - Local	Local	2026	All
121FTA			Rural Transit - Capital - Support Equipment/PM	-	Transit	291 - TOTAL 233 - FTA-5311 58 - Local	Local	2026	All
122FTA			Rural Transit - Capital - Intercity	-	Transit	722 - TOTAL 578 - FTA-5311 144 - Local	Local	2026	All

2023-2026 PBATS DRAFT TIP

JOB	COUNTY	ROUTE	TERMINI	LENGTH	TYPE WORK	ESTIMATED COST Funding Breakdown (in thousands)	AGENCY CARRYING OUT THE PROJECT	FFY	MPO
123FTA			Rural Transit - Operating - Rural	-	Transit	15,386 - TOTAL 7,693 - FTA-5311 7,693 - Local	Local	2026	All
124FTA			Rural Transit - Operating - Intercity	-	Transit	2,430 - TOTAL 1,215 - FTA-5311 1,215 - Local	Local	2026	All
125FTA			Rural Transit - RTAP	-	Transit	370 - TOTAL 370 - FTA-5311	Local	2026	All
200PTF			Public Transit Trust Fund	-	Transit	5,000 - TOTAL 5,000 - State	Local	2026	All
201TLS			Translease	-	Transit	780 - TOTAL 780 - Local	Local	2026	All
202HUA			HUA	-	Transit	350 - TOTAL 350 - State	Local	2026	All
PBT001			Operating Assistance	-	Transit	896 - TOTAL 448 - FTA-5307 448 - Local	Local	2026	PBATS
PBT002			Capital - Preventive Maintenance	-	Transit	274 - TOTAL 219 - FTA-5307 55 - Local	Local	2026	PBATS
PBT003			Capital - Paratransit Service	-	Transit	168 - TOTAL 134 - FTA-5307 34 - Local	Local	2026	PBATS
PBT004			Capital - Rolling Stock/Support Equipment	-	Transit	128 - TOTAL 102 - FTA-5339 26 - Local	Local	2026	PBATS
PBT005			Capital - Planning	-	Transit	30 - TOTAL 24 - FTA-5307 6 - Local	Local	2026	PBATS
PBT006			Consolidated Planning Grant (MPO)	-	Transit	140 - TOTAL 112 - FTA-5305 28 - Local	Local	2026	PBATS
PBT007			Capital - Rolling Stock-Conway Funds	-	Transit	178 - TOTAL 142 - FTA-5307 36 - Local	Local	2026	PBATS

2023-2026 PBATS DRAFT TIP

JOB	COUNTY	ROUTE	TERMINI	LENGTH	TYPE WORK	ESTIMATED COST Funding Breakdown (in thousands)	AGENCY CARRYING OUT THE PROJECT	FFY	MPO
020734	Jefferson	I-530	Stagecoach Rd. – Hwy. 65B (S)	11.28	System Preservation	3,600 - TOTAL 3,240 - NHPP 360 - State	State	TBD	PBATS
A20019	Jefferson	54	Hwy. 79 – Grant Co. Line (S)	10.39	System Preservation	4,500 - TOTAL 3,600 - STBGP 900 - State	State	TBD	PBATS
02X268	Jefferson	79	Cleveland City – Pinewood (S)	9.21	System Preservation	3,600 - TOTAL 2,880 - NHPP 720 - State	State	TBD	PBATS
020755	Jefferson	256	I-530 – Baldwin Rd. (White Hall) (S)	2.29	System Preservation	600 - TOTAL 480 - NHPP 120 - State	State	TBD	PBATS
020748	Grant & Jefferson	270	Hurricane Creek – Hwy. 104 (Sel. Secs.) (S)	5.47	System Preservation	1,300 - TOTAL 1,040 - NHPP 260 - State	State	TBD	PBATS
02X248	Jefferson	425	Lincoln Co. Line – Hwy. 65 (S)	8.33	System Preservation	5,000 - TOTAL 4,000 - NHPP 1,000 - State	State	TBD	PBATS

TRANSIT			
GLOSSARY OF TERMS / ABBREVIATIONS / ACRONYMS			
FTA	Federal Transit Administration Funds	NARTS	Northwest Arkansas Regional Transportation Study
BI-STATE	Bi-State Transportation Study	PBATS	Pine Bluff Area Transportation Study
HSA	Hot Springs Area Metropolitan Planning Organization	PBT	Pine Bluff Transit
JATS	Jonesboro Area Transportation Study	TUTS	Texarkana Urban Transportation Study
FTA 5304	Transit System Statewide Planning & Programming Funds	FTA 5305	Transit Systems Planning Programs
FTA 5307	Urbanized Area Formula Funds	FTA 5310	Funding for Enhanced Mobility for Seniors and individuals with Disabilities
FTA 5311	Formula Grant Funds for transit systems in rural areas / populations < 50,000	FTA 5329	Transit Safety and Oversight Funds
FTA 5337	State of Good Repair Funds	FTA 5339	Bus and Bus Facilities Grants Program

FINANCIAL SUMMARIES

PBATS MPO AREA HIGHWAY PROJECT						
Funding Category	FFY 2023	FFY 2024	FFY 2025	FFY 2026	FFY TBD	Total
<i>(in thousands)</i>						
NHPP	19,612	13,600	-	-	11,640	44,852
STBGP	4,480	-	-	-	3,600	8,080
Earmark	1,108	-	-	-	-	1,108
NHPP-Br	-	-	-	-	-	0
Total	25,200	13,600	-	-	15,240	54,040
				-		
State	6,300	3,400	-	-	3,360	13,060
Local	-	-	-	-	-	0
State/Local	-	-	-	-	-	0
Total	6,300	3,400	-	-	3,360	13,060
Grand Total	31,500	17,000	-	-	18,600	67,100

The funding shown in the Statewide Financial Summary table includes PBATS MPO related projects as noted on pages 23-25.

FFY 2023-2026 TIP SUMMARY OF TRANSIT FUNDS

Arkansas receives an annual apportionment for Section 5307,5310,5311, and 5339 programs (listed as Statewide Projects in TIP). ArDOT solicits a Statewide annual application process from transit providers in both urbanized and rural area. Based on submitted applications, applicant's eligibility, project's eligibility, rating system and available funds, ArDOT approves projects for funding. ArDOT approved projects are submitted to the FTA for their approval. Once approved by the FTA, agencies throughout the State are informed of grant awards and contracts are executed.

Urbanized Area Formula Program (49 U.S.C. §5307)(FAST Act)

FTA apportions Urbanized Area Formula Program funds to designated recipients within urbanized areas with populations of 50,000 or more. .

The Urbanized Area Formula Section 5307 provides operating and capital funds to the Metropolitan Planning Area which includes Pine Bluff, White Hall and portions of unincorporated Jefferson County. Currently 5307 Transit funds have been limited to Pine Bluff Transit. Map-21 expanded the use of these funds for operating expenses and the FAST Act continued the operating expense eligibility.

Enhanced Mobility for Seniors and Individuals with Disabilities Program (49 U.S.C. §5310)(FAST Act)

Enhanced Mobility for Seniors and Individuals with Disabilities Program is a formula assistance program to improve mobility for seniors and individuals with disabilities. Public transportation projects may be implemented in areas where public transportation is insufficient, inappropriate, or unavailable; public transportation projects that exceed the requirements of the Americans with Disabilities ACT (ADA) ; projects that improve access to fixed-route service and decrease reliance on complimentary paratransit; and alternatives to public transportation projects that assist seniors and individuals with disabilities.

Rural Area Formula Program (49 U.S.C. §5311)(FAST Act)

The Rural Area Formula Program is a formula grant program that provides capital, planning, and operating assistance to States that support public transportation in rural areas with populations less than 50,000. SEAT provides demand response service to the rural areas within the PBATS MPA.

Bus and Bus Facilities Program (49 U.S.C. §5339)(FAST Act)

Map-21 created a new formula grant program for bus and bus facilities that replaced the 5309 discretionary program, and the FAST Act continues this program. The program provides funding for replacing, rehabilitating, and purchasing new buses and bus related equipment and facilities. Funding is utilized by both Pine Bluff Transit and SEAT.

ANNUAL LISTING OF OBLIGATED PROJECTS

An Annual Listing of Obligated Projects (ALOP) is required according to 23 CFR 450.334. On an annual basis, no later than 90 calendar days following the end of the program year. ArDOT, the public transit agencies and SEARPC MPO cooperatively develop a listing of projects (including investments in pedestrian walkways and bicycle transportation facilities)

for which funds under 23 U.S.C. Or 49 U.S.C Chapter 53 were obligated in the preceding program year.

This list is published by the SEARPC MPO each year in December. The list is located at <https://searpc.com//images/uploads/20211230/fy-2021-annual-listing-of-federally-obligated-projects-35995.pdf> . This list includes all funding obligated during the preceding federal fiscal year. An obligation is a commitment of the federal government’s promise to pay for the federal share of a project’s eligible cost. The commitment occurs when the project is approved, and the project agreement is executed.

2021-2024 TIP PROJECT STATUS

FY 2019-2022 Transportation Improvement Program (TIP) Project Status				
Job #	County	Route	Name	Status
012359	Jefferson	63	Hwys. 18, 63, & 167 (Sel. Secs.)	Completed
02X041	Jefferson	54	Hwy 79 Nevins Creek Pine Bluff	Completed
020696	Jefferson	463	S. Main St. – I-530 (Pine Bluff)	In-progress
020702	Jefferson	63 & 65B	1-530 to I-530 (Pine Bluff)	Completed
020716	Jefferson	65	I-530 – Hwy 425 (Minor Widening)	2023
020615	Jefferson	79	Pine Bluff - South	2024
020701	Jefferson	79 & 79B	Couch Ln – Burnett St. (Pine Bluff)	Completed
020588	Jefferson	190	11th Ave.- Harding Ave	Awarded
020628	Jefferson	190	I-530 -Hwy 79B (Franklin & 6th)	2023
02X119	Jefferson	256	I-530 – Baldwin Rd (White Hall)	TBD
02X143	Grant/Jefferson	270	Hurricane Creek – Hwy 104 (Sel. Secs)	TBD
020626	Jefferson	270 / 365 S	Hwy 104 - Hwy 365	2023
020661	Jefferson	I-530	I-530 Access Imprvts (Pine Bluff)	2024

ENVIRONMENTAL JUSTICE

Environmental Justice is a process that ensures that the minority and low-income populations are not excluded from policy-setting or decision-making processes with regards to transportation and are also not negatively impacted by environmental burdens.

The framework for the approach to environmental justice is found in Title VI of the 1964 Civil Rights Act. The Executive Order 12898, ‘Federal Actions to Address Environmental Justice in Minority Populations and Low-Income Populations’ was signed on February 11, 1994. The Presidential memorandum accompanying EO 12898 identified Title VI of the Civil Rights Act of 1964 as one of several federal laws that should be applied ‘to prevent minority communities and low-income communities from being subject to disproportionately high and adverse environmental effects.’ According to the U.S. Department of Justice, ‘...the core tenet of environmental justice – that development and urban renewal benefitting a community as a whole not be unjustifiably purchased through the disproportionate allocation of its adverse environmental and health burdens on the community’s minority – flows directly from the underlying principle of Title VI itself’.

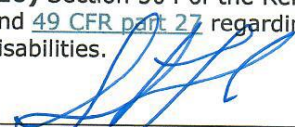
The TIP follows the 2045 MTP Constrained List which follows the Federal Highway Administration guidance regarding the compliance with the intent of the environmental justice provisions.

**CERTIFICATIONS
AND
ASSURANCES**


SELF-CERTIFICATIONS

In accordance with § 450.336 the Arkansas Department of Transportation and the Pine Bluff Area Transportation Study for the Pine Bluff Metropolitan Area certify that the Transportation Planning Process is being carried out in accordance with all applicable requirements of:

- (1) [23 U.S.C. 134](#), [49 U.S.C. 5303](#), and this subpart;
- (2) In nonattainment and maintenance areas, sections 174 and 176(c) and (d) of the Clean Air Act, as amended ([42 U.S.C. 7504](#), [7506\(c\)](#) and (d)) and [40 CFR part 93](#);
- (3) Title VI of the Civil Rights Act of 1964, as amended ([42 U.S.C. 2000d-1](#)) and [49 CFR part 21](#);
- (4) [49 U.S.C. 5332](#), prohibiting discrimination on the basis of race, color, creed, national origin, sex, or age in employment or business opportunity;
- (5) Section 1101(b) of the FAST Act ([Pub. L. 114-357](#)) and [49 CFR part 26](#) regarding the involvement of disadvantaged business enterprises in DOT funded projects;
- (6) [23 CFR part 230](#), regarding the implementation of an [equal employment opportunity program](#) on Federal and Federal-aid [highway](#) construction contracts;
- (7) The provisions of the Americans with Disabilities Act of 1990 ([42 U.S.C. 12101 et seq.](#)) and [49 CFR parts 27, 37, and 38](#);
- (8) The Older Americans Act, as amended ([42 U.S.C. 6101](#)), prohibiting discrimination on the basis of age in programs or activities receiving Federal financial assistance;
- (9) Section 324 of title 23 U.S.C. regarding the prohibition of discrimination based on gender; and
- (10) Section 504 of the Rehabilitation Act of 1973 ([29 U.S.C. 794](#)) and [49 CFR part 27](#) regarding discrimination against individuals with disabilities.


Steve Frisbee, Planning Division Engineer
Arkansas Department of Transportation

3-30-2021
Date


Ken Smith, PBATS Chair

3-19-21
Date

CERTIFICATIONS AND ASSURANCES SIGNATURE PAGE

AFFIRMATION OF APPLICANT


Name of the Applicant: Southeast Arkansas Regional Planning Commission

BY SIGNING BELOW, on behalf of the Applicant, I declare that it has duly authorized me to make these Certifications and Assurances and bind its compliance. Thus, it agrees to comply with all federal laws, regulations, and requirements, follow applicable federal guidance, and comply with the Certifications and Assurances as indicated on the foregoing page applicable to each application its Authorized Representative makes to the Federal Transit Administration (FTA) in the federal fiscal year, irrespective of whether the individual that acted on his or her Applicant's behalf continues to represent it.

The Certifications and Assurances the Applicant selects apply to each Award for which it now seeks, or may later seek federal assistance to be awarded by FTA during the federal fiscal year.

The Applicant affirms the truthfulness and accuracy of the Certifications and Assurances it has selected in the statements submitted with this document and any other submission made to FTA, and acknowledges that the Program Fraud Civil Remedies Act of 1986, 31 U.S.C. § 3801 *et seq.*, and implementing U.S. DOT regulations, "Program Fraud Civil Remedies," 49 CFR part 31, apply to any certification, assurance or submission made to FTA. The criminal provisions of 18 U.S.C. § 1001 apply to any certification, assurance, or submission made in connection with a federal public transportation program authorized by 49 U.S.C. chapter 53 or any other statute

In signing this document, I declare under penalties of perjury that the foregoing Certifications and Assurances, and any other statements made by me on behalf of the Applicant are true and accurate.

Signature  Date: 3-7-2022

Name Larry Reynolds, Director Authorized Representative of Applicant

**PINE BLUFF AREA TRANSPORTATION STUDY
RESOLUTION #2022 - 3**

**ADOPTING THE FFY 2023-2026 TRANSPORTATION IMPROVEMENT PROGRAM
(TIP) FOR THE PINE BLUFF AREA (PBATS) TRANSPORTATION STUDY
METROPOLITAN AREA**

WHEREAS, the U.S. Department of Transportation requires development of a four year financially constrained Transportation Improvement Program (TIP) for each urbanized area under the direction of the Metropolitan Planning Organization (MPO); and

WHEREAS, the local transportation projects utilizing Federal Highway Administration funds must be included in the TIP; and

WHEREAS, the local transit projects utilizing Federal Transit Administration funds must also be listed in the TIP; and

WHEREAS, the Pine Bluff Area Transportation Study Metropolitan Planning Organization (MPO) is designated as the policy body responsible for performing the transportation planning; and

WHEREAS, the PBATS MPO complied with the public involvement policy to solicit public and private sector involvement and review to discuss the Draft 2023-2026 TIP; and

WHEREAS, the PBATS Policy Board self-certifies that the Planning Process is consistent with 23 CFR part 450.334 and other Federal requirements; and

NOW, THEREFORE BE IT RESOLVED, that PBATS Policy Board hereby adopts the FFY 2023-2026 Transportation Improvement Program.

PASSED AND APPROVED THIS 3rd DAY OF November 2022.

Ken Smith, Chairman

Larry Reynolds, Study Director

Public Comments Received

As required by federal regulations and as part of the PBATS Public Participation Process notice was made requesting input from the public on the proposed 2023-2026 Transportation Improvement Plan. Following is a synopsis of the comments received.