

PINE BLUFF, JEFFERSON COUNTY, ARKANSAS
SW 1/4 SECTION 22 TOWNSHIP 5 RANGE 10

LIST OF OFFICIAL PLATS FOR THIS PAGE ON FILE AT THE JEFFERSON COUNTY COURTHOUSE

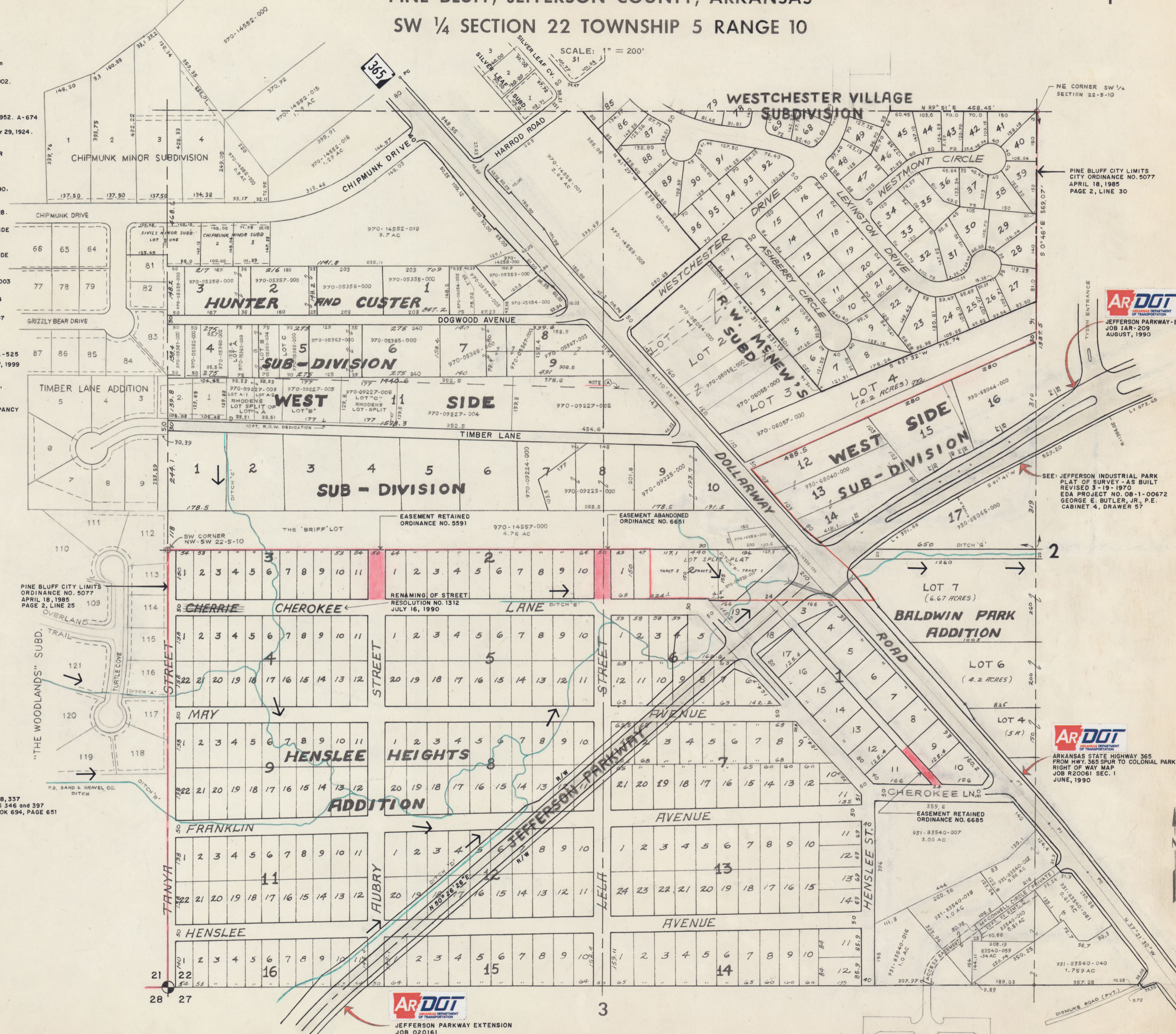
- BALDWIN PARK ADDITION, Recorded May 30, 1939. In Cabinet A, Page 576
- CHIPMUNK MINOR SUBDIVISION, Recorded August 6, 2002. In Cabinet C, Page 58
- CHIPMUNK MINOR SUBDIVISION, UNIT TWO, Recorded April 9, 2003. In Cabinet C, Page 55
- HENSLEE HEIGHTS ADDITION, Recorded September 2, 1952. A-674
- HUNTER AND CUSTER SUBDIVISION, Recorded November 29, 1924. In Cabinet A, Page 501
- LOT SPLIT OF LOTS 4 and 5, HUNTER AND CUSTER SUBDIVISION, Recorded September 26, 2016. In Cabinet C, Page 280
- LOT SPLIT PLAT, PART OF LOT 2, BLOCK 1, HENSLEE HEIGHTS ADDITION, Recorded June 6, 1990. In Cabinet B, Page 598
- R.W. McNEW'S SUBDIVISION, Recorded August 31, 1928. In Cabinet A, Page 549
- RHODEN'S LOT SPLIT OF PART OF LOT 11, WEST SIDE SUBDIVISION, Recorded November 10, 2004. In Cabinet C, Page 97
- RHODEN'S LOT SPLIT OF LOT A OF LOT 11, WEST SIDE SUBDIVISION, Recorded October 25, 2019. In Cabinet C, Page 333
- SILVER LEAF SUBDIVISION, Recorded October 21, 2003. In Cabinet C, Page 72
- SIVILS MINOR SUBDIVISION, Recorded March, 2004. In Cabinet C, Page 78
- TIMBER LANE ADDITION, Recorded February 23, 2007. In Cabinet C, Page 152
- WESTCHESTER VILLAGE SUBDIVISION, Recorded August 27, 1973
- WESTSIDE SUBDIVISION, Recorded August 30, 1926. A-525
- THE WOODLANDS' SUBDIVISION, Recorded February 17, 1999. In Cabinet B, Page 768, 769

NOTE (A) - THIS DASHED LINE REPRESENTS THE NORTH LINE OF WEST SIDE SUBDIVISION AND ALTHOUGH IN APPARENT CONFLICT WITH THE SOUTH LINE OF HUNTER AND CUSTER SUBDIVISION, NO SUCH DISCREPANCY ACTUALLY EXISTS ON THE GROUND. THEY ARE ONE AND THE SAME LINE.

JEFFERSON PARKWAY EXTENSION AR DOT JOB NO. 020161 RIGHT OF WAY DEEDS ON FILE AT THE JEFFERSON COUNTY COURTHOUSE

- HENSLEE HEIGHTS ADDITION:
 - BLOCK 1, LOT 2-DEED BOOK 657 PAGES 374-376
 - BLK. 1, LT. 3 - BK. 658 P. 635-639
 - BLK. 1, LT. 18 - BK. 658 P. 635
 - BLK. 1, LT. 19 - BK. 657 P. 372, 399
- BLK. 6, LOT 4 - BK. 657 P. 15-17
- BLK. 6, LOT 5 - BK. 657 P. 370
- BLK. 6, LOT 6 - BK. 657 P. 11
- BLK. 6, LOT 7 - BK. 656 P. 107, 109
- BLK. 6, LOT 8 - BK. 657 P. 334, 343
- BLK. 6, LOT 9 - BK. 658 P. 631
- BLK. 6, LOTS 10 & 11 - BOOK 657, P. 330, 339
- BLOCK 7, LOT 1 - BOOK 657, PAGE 329, 343
- BLK. 7, LOT 2 - BK. 657, P. 359, 364
- BLK. 7, LOT 3 - BK. 657, P. 05, 07
- BLK. 7, LOT 21 - BOOK 657, P. 329, 338
- BLK. 8, LOT 10 - BK. 694, P. 653
- BLK. 8, LOTS 11 and 12 - BK. 657, P. 334, 338, 342, 343
- BLK. 8, LOT 13 - BK. 657, P. 338
- BLK. 8, LOT 14 - BK. 657, P. 357
- BLK. 12, LOTS 3 and 4 - BOOK 657, PAGE 328
- BLOCK 12, LOT 5 - BOOK 657, P. 348, 350
- BLK. 12, LOT 6 - BOOK 657, P. 353, 355
- BLOCK 12, LOTS 7, 8, 15 and 16 - BOOK 657, PAGE 328, 337
- BLOCK 12, LOT 17 - WARRANT DEED BOOK 657, PAGES 346 and 397
- BLK. 12, LOT 18 - BOOK 657, P. 327, 333, 342 and BOOK 694, PAGE 651
- BLOCK 12, LOT 19 - BOOK 694, PAGE 651
- BLK. 12, LOT 20 - CIVIL CASE NO. CIV 95-435-2
- BLOCK 15, LOT 1 - BOOK 657, PAGE 323, 325
- BLOCK 15, LOT 2 - BOOK 656, PAGE 105
- BLOCK 16, LOTS 8, 9 and 10 - BOOK 656, PAGE 102
- BLK. 16, LOT 11 - BOOK 656, PAGE 100

REVISIONS	
DATE	BY
10-1-20	JCS



PINE BLUFF CITY LIMITS CITY ORDINANCE NO. 5077 APRIL 18, 1985 PAGE 2, LINE 30

AR DOT ARKANSAS DEPARTMENT OF TRANSPORTATION JEFFERSON PARKWAY - E. & N. JOB IAR-209 AUGUST, 1990

SEE: JEFFERSON INDUSTRIAL PARK PLAT OF SURVEY - AS BUILT REVISED 3-19-1970 EDA PROJECT NO. 08-1-00672 GEORGE E. BUTLER, JR., P.E. CABINET 4, DRAWER 57

AR DOT ARKANSAS DEPARTMENT OF TRANSPORTATION ARKANSAS STATE HIGHWAY 365 FROM HWY. 365 SPUR TO COLONIAL PARK DRIVE RIGHT OF WAY MAP JOB R20061 SEC. 1 JUNE, 1990

AR DOT ARKANSAS DEPARTMENT OF TRANSPORTATION JEFFERSON PARKWAY EXTENSION JOB 020161 AUGUST, 1995