

**PINE BLUFF AREA TRANSPORTATION STUDY  
JEFFERSON COUNTY – PINE BLUFF – WHITE HALL**

**TRANSPORTATION  
IMPROVEMENT  
PROGRAM**

**FISCAL YEARS 2016 - 2020**

**Prepared by:**

**Southeast Arkansas Regional Planning Commission**

**In cooperation with:**

**Arkansas Highway and Transportation Department  
Cities of Pine Bluff and White Hall  
Jefferson County  
Federal Highway Administration  
Federal Transit Administration**

The preparation and publication of this document is in accordance with the 2040 PBATS Metropolitan Transportation Plan, the Moving Ahead for Progress in the 21<sup>st</sup> Century (MAP-21) Act and Fixing America's Surface Transportation (FAST) Act in cooperation with the Arkansas State Highway and Transportation Department, the Federal Highway Administration, the Federal Transit Administration and local agencies. This report was financed in part by funds provided by the United States Department of Transportation, Federal Highway Administration, and Federal Transit Administration. The provision of Federal financial assistance should not be construed as denoting U.S. governmental approval of plans, policies, programs, or projects contained herein.

**NOTICE OF NONDISCRIMINATION:**

The Southeast Arkansas Regional Planning Commission (SARPC) complies with all civil rights provisions of federal statutes and related authorities that prohibit discrimination in programs and activities receiving federal financial assistance. Therefore, SARPC does not discriminate on the basis of race, sex, color, age, national origin, religion, or disability, in the admission, access to and treatment in SARPC'S programs and activities, as well as the SARPC's hiring or employment practices. Complaints of alleged discrimination and inquiries regarding the SARPC's nondiscrimination policies may be directed to Larry Reynolds, Director/Study Director, 1300 Ohio, Suite B, Pine Bluff, AR 71601 (870) 534-4247 or the following email address: [larryreynolds@cablelynx.com](mailto:larryreynolds@cablelynx.com).

## TABLE OF CONTENTS

INTRODUCTION / PURPOSE	1
PROJECT SELECTION PROCESS	2
AIR QUALITY CONFORMANCE	3
HIGHWAY AND ROAD PROJECTS (2016 – 2020)	4
Glossary of Terms / Abbreviations / Acronyms	5
State Projects Sorted by Route FFY 2016-2020	6
Local Projects <200,000 Population FFY 2016-2020	8
Statewide Generic Projects FFY 2016	9
Statewide Generic Projects FFY 2017	11
Statewide Generic Projects FFY 2018	13
Statewide Generic Projects FFY 2019	15
Statewide Generic Projects FFY 2020	17
TRANSIT PROJECTS (2016 – 2020)	19
Glossary of Terms / Abbreviations / Acronyms	20
Transit Projects FFY 2016	21
Transit Projects FFY 2017	22
Transit Projects FFY 2018	23
Transit Projects FFY 2019	24
Transit Projects FFY 2020	25
STATEWIDE AND LOCAL FINANCIAL SUMMARIES	26
Statewide Financial Summary	27
Local Financial Summary	28
ENVIRONMENTAL JUSTICE	29
CERTIFICATIONS AND ADOPTION	32
Self-Certification	33
PBATS Resolution	34
MPO Certification	35
Public Comments	36

**PINE BLUFF AREA TRANSPORTATION STUDY  
TRANSPORTATION IMPROVEMENT PROGRAM  
FY 2016 - 2020**

---

**INTRODUCTION AND PURPOSE**

The Southeast Arkansas Regional Planning Commission (SARPC) serves as the designated Metropolitan Planning Organization (MPO) and is responsible for the transportation planning activities in Pine Bluff, White Hall and a portion of Jefferson County in Arkansas. The Metropolitan Planning Area (MPA) includes within the geographic area that portion of Jefferson County designated by the 2010 Census as the Pine Bluff Urbanized Area.

The FFY 2016 – 2020 Transportation Improvement Program (TIP) has been developed as a part of the 3C (continuing, cooperative, and comprehensive) planning program as established under planning regulations of the U.S. Department of Transportation. The FFY 2016 – 2020 TIP includes all transportation improvements planned or programmed within the MPA that will utilize Federal funding for all or part of their implementation costs. The purpose of the TIP is for it to be used as a program management tool to coordinate the Metropolitan Transportation Plan and ensure that the projects that are the recipient of these Federal funds are in agreement with the 2040 PBATS Metropolitan Transportation Plan adopted on September 18, 2015.

The projects that are listed in the FFY 2016 – 2020 TIP have been selected by and coordinated with local governments within the MPA and with AHTD. They have been reviewed for consistency with the 2040 MTP, responsiveness to local and regional needs, and for the availability of Federal funds and non-Federal matching funds. This Federal and non-matching Federal matching fund fiscal constraint is a primary component of the TIP.

The fiscal constraint component means that there is a reasonable expectation of Federal funds being available for the projects listed in the five year TIP time period.



## PROJECT SELECTION PROCESS

The TIP is consistent with the PBATS 2040 Metropolitan Transportation Plan and was submitted to the Southeast Arkansas Regional Planning Commission MPO for approval. Full funding is anticipated to be available for each project within the time period contemplated for completion of the project.

In accordance with Section 134 of Title 23 U.S.C. Chapter 1, as amended, the MPO operates under the following Project Selection Procedures:

1. The approved Transportation Improvement Program shall be utilized for programming projects within the PBATS Study Area.
2. Any project listed in the first year of the approved Transportation Improvement Program shall be considered the highest priority and may be implemented as soon as plans are completed and funds are appropriated. Projects in the second, third, and fourth years of the TIP are considered to have second, third, and fourth priorities, respectively.
3. If a project in the first year cannot be accomplished, then a project from the second year will be selected and those projects may be initiated as plans are completed and funds are appropriated.

These procedures were developed cooperatively between the Arkansas Highway and Transportation Department and the MPO and were approved with this document.

### FTA Sections 5307, 5310, 5311, and 5339 funds:

The public participation procedures outlined in the SARPC's Public Participation Plan (PPP) serve as the public participation process required for the development of transit projects as per FTA Circular 9030. Specifically, the public participation procedures outlined in the PPP will serve to satisfy the Program of Projects (POP) requirements of the Section 5307 Urbanized Area Formula Grant Program for Pine Bluff Transit.

Arkansas receives an annual apportionment for the Federal Transit Administration for the 49 U.S.C. Chapter 53, Sections 5307 (FAST Act Section 3004), Section 5310 (FAST Act Section 3006), Section 5311 (FAST Act Section 3007) and Section 5339 (FAST Act Section 3017). These are listed as Statewide Projects in the Transportation Improvement Program (TIP). The Arkansas State Highway and Transportation Department (AHTD) solicits a Statewide annual application process from transit providers in both urbanized and rural areas. Based on submitted applications, applicant's eligibility, project's eligibility, rating system and available funds, the AHTD approves projects for funding. The AHTD approved projects are submitted to the Federal Transit Administration (FTA) for their approval. Once approved by the FTA, agencies throughout the state are informed of grant awards and contracts are executed.



Funds for highway and transit Statewide Projects are total funds available throughout the State. Projects may be selected within the PBATS area and are at the discretion of AHTD.

### **AIR QUALITY CONFORMANCE**

The MPO, Southeast Arkansas Regional Planning Commission, has been advised by the EPA that the Pine Bluff Area Transportation Study Area is in attainment status. In accordance with guidelines for air quality conformity, as determined by a joint agreement between EPA and FHWA, no air quality conformity submission is necessary at this time.

**PINE BLUFF AREA TRANSPORTATION STUDY  
TRANSPORTATION IMPROVEMENT PROGRAM  
FY 2016 – 2020**

---

**HIGHWAY AND ROAD PROJECTS**



**GLOSSARY OF FUNDING SOURCE TERMS / ABBREVIATIONS / ACRONYMS**

<b>BR</b>	Bridge		<b>SAFETY</b>	Various Statewide Safety Improvements
<b>BR-OFF</b>	Bridge Off System		<b>STBGP</b>	Surface Transportation Block Grant Program
<b>CAP</b>	Connecting Arkansas Program		<b>STBGP-A</b>	Surface Transportation Block Grant Program-Attributable (Funding coming directly to MPO)
<b>CMAQ-FLEX</b>	Congestion Management and Air Quality-Flexible		<b>STBGP 200K</b>	Surface Transportation Block Grant Program-Attributable
<b>Earmark</b>	Various Earmarked Funds in Previous Highway Acts		<b>TAP</b>	Transportation Alternatives Program – State Funding
<b>HSIP</b>	Highway Safety Improvement Program		<b>TAP</b>	Transportation Alternatives Program – Funding coming directly to MPO
<b>IM</b>	Interstate Maintenance		<b>STATE_LOCAL</b>	State or Local Funding Depending Upon Location
<b>NFP</b>	National Highway Freight Program		<b>100 % STATE</b>	100 % State Funding
<b>NHPP</b>	National Highway Performance Program		<b>TIP</b>	Transportation Improvement Plan
<b>NHPP (IRP)</b>	National Highway Performance Program (Interstate Rehabilitation Program)		<b>STIP</b>	State Transportation Improvement Plan
<b>NHS</b>	National Highway System			
<b>Rail HWY</b>	RR Xing Protection Devices/Surfacing/Hazard Elimination			

# PINE BLUFF AREA TRANSPORTATION STUDY TRANSPORTATION IMPROVEMENT PROGRAM 2016 – 2020

STATE PROJECTS SORTED BY ROUTE

Job / Item Number	County	Route	Termini / Name	Type Work	Length	Estimated Cost (x \$1,000)	Providing Matching Funds	Carrying Out The Project	Let Year	TIP Area	A P H N
BB0202	Jefferson	530	Hwy 104 – Hwy 65B (F)	Reconstruction	5.00	23,000 -Total 23,000 -Bond	State	State	2016	PBATS	X
						30,000 -Total 14,500 -NHPP IRP					
BB0203	Jefferson	530	Hwy 65B – Hwy 65 (F)	Reconstruction	11.75	12,500 -NFP 3,000 -State	State	State	2017	PBATS	X
02X037	Jefferson	65B	Bryant St. – Convention Center Dr. (Pine Bluff)	System Preservation	4.20	3,000 -Total 2,400 -NHPP 600 -State	State	State	2017	PBATS	X
02X020	Arkansas & Jefferson	79	Pine Bluff – Stuttgart (4 Passing Lanes)	Passing Lanes	4.80	9,200 -Total 7,360 -NHPP 1,840 -State	State	State	2018	PBATS	X
S20202	Jefferson	79B	Caney Bayou – Arkansas River (Mill & Inlay) (S)	System Preservation	2.84	1,500 -Total 1,200 -NHPP 300 -State	State	State	2018	PBATS	X
02X053	Jefferson	365	Grant Co. Line – South (Sel. Secs.)	System Preservation	17.09	8,000 -Total 6,400 -STBGP 1,600 -State	State	State	2018	PBATS	X
02X051	Jefferson	104	Hwy 270 – Hwy 365	System Preservation	4.60	1,100 -Total 880 -STBGP 220 -State	State	State	2018	PBATS	
02X005	Jefferson	79	Pine Bluff - South	Major Widening	2.38	5,500 -Total 4,400 -NHPP 1,100 -State	State	State	2019	PBATS	X
02X014	Jefferson	65	Pine Bluff – East (Sel. Secs.)	System Preservation	14.06	6,500 -Total 5,200 -NHPP 1,300 -State	State	State	2018	PBATS	X
02X016	Jefferson	270/365S	Hwy 104 – East of Jefferson Parkway (White Hall and Pine Bluff)	Major Widening	4.59	15,000 -Total 12,000 -NHPP 3,000 -State	State	State	2019	PBATS	X
02X018	Jefferson	190	I-530 - Hwy 79B (Franklin Street & 6th Avenue)	System Preservation	2.09	3,500 -Total 2,800 -STBGP 700 -State	State	State	2019	PBATS	X
02X001	Jefferson	190	11th Avenue – Harding Avenue (reconstruction)	Reconstruction	.39	1,700 -Total 1,360 -STBGP 340 -State	State	State	2019	PBATS	X



**PINE BLUFF AREA TRANSPORTATION STUDY  
TRANSPORTATION IMPROVEMENT PROGRAM 2016 – 2020**

STATE PROJECTS SORTED BY ROUTE

Project ID	County	Route	Project Name	Strs. & Apprs.	800 -Total 640 -NHPP BR 160 -State	State	2018	2019	2020	PBATS
020584	Jefferson	54	Sandy Bayou Str. & Apprs.	0.00		State				PBATS
02X054					5,000 -Total 4,000 -NFP 1,000 -State	State				PBATS
	Jefferson	530	Access Imprvts. For Possible Economic Development	New Location		State				PBATS
Additional funds to be determined through partnering to provide access improvements for potential economic development.										
02X041	Jefferson	63	Pine Bluff – South	System Preservation	1,500 -Total 1,200 -STBGP 300 -State	State				PBATS
					3.10	State				PBATS

**PINE BLUFF AREA TRANSPORTATION STUDY  
TRANSPORTATION IMPROVEMENT PROGRAM 2016 – 2020**

**LOCAL PROJECTS < 200,000 POPULATION**

Job / Item Number	County	Route	Termini / Name	Type Work	Length	Estimated Cost (x \$1,000)	Providing Matching Funds	Carrying Out The Project	Let Year	Tip Area
XX2016-17	Statewide		Various Signals and Intersection Improvements	Intersection Improvements		2,500 -Total 2,000 -STBGP 500 -State Local	State/Local	State	2016	ALL
XX2017-17	Statewide		Various Signals and Intersection Improvements	Intersection Improvements		2,500 -Total 2,000 -STBGP 500 -State Local	State/Local	State	2017	ALL
XX2018-17	Statewide		Various Signals and Intersection Improvements	Intersection Improvements		2,500 -Total 2,000 -STBGP 500 -State Local	State/Local	State	2018	ALL
XX2019-17	Statewide		Various Signals and Intersection Improvements	Intersection Improvements		2,500 -Total 2,000 -STBGP 500 -State Local	State/Local	State	2019	ALL
XX2020-17	Statewide		Various Signals and Intersection Improvements	Intersection Improvements		2,500 -Total 2,000 -STBGP 500 -State Local	State/Local	State	2020	ALL
XX2017-18	Statewide		Various Sealing Projects	System Preservation		11,250 -Total 9,000 -STBGP 2,250 -State	State	State	2017	ALL
XX2018-18	Statewide		Various Sealing Projects	System Preservation		11,250 -Total 9,000 -STBGP 2,250 -State	State	State	2018	ALL
XX2019-18	Statewide		Various Sealing Projects	System Preservation		11,250 -Total 9,000 -STBGP 2,250 -State	State	State	2019	ALL
XX2020-18	Statewide		Various Sealing Projects	System Preservation		11,250 -Total 9,000 -STBGP 2,250 -State	State	State	2020	ALL

Includes all MPO's with the exception of the urbanized areas of CARTS, NARTS, and WMATS.



# PINE BLUFF AREA TRANSPORTATION STUDY TRANSPORTATION IMPROVEMENT PROGRAM 2016 – 2020

## STATEWIDE GENERIC PROJECTS FFY 2016

Job / Item Number	County	Route	Termini / Name	Type Work	Length	Estimated Cost (x \$1,000)	Providing Matching Funds	Carrying Out The Project	Let Year	Tip Area
XX2016-01	Statewide		IRP Debt Service	Miscellaneous		58,000 -Total 58,000 -NHPP (IRP)	State	State	2016	ALL
XX2016-02	Statewide		Various Resurf / Restoration / Rehab / Reconstruction	4-R		2,000 -Total 1,000 -NHPP 600 -STBGP 400 -State	State	State	2016	ALL
XX2016-03	Statewide		Various Bridge Rehab / Replacement	Str. & Apprs.		1,000 -Total 800 -NHPP BR 200 -State Local	State/Local	State/Local	2016	ALL
XX2016-04	Statewide		Bridge Guard Rail / Scour Control / Inspection / Inspection Equipment	Miscellaneous		5,000 -Total 3,000 -STBGP 1,000 -STBGP Br Off 1,000 -State Local	State/Local	State	2016	ALL
XX2016-05	Statewide		RR Xing Protect Devices / Surfacing / Hazard Elim	Safety & Traf. Eng.		3,800 -Total 3,420 -Rail Hwy 380 -State	State/RR	State/RR	2016	ALL
XX2016-06	Statewide		Various Transportation Alternatives Programs	Miscellaneous		8,000 -Total 6,400 -TAP 1,600 -Local	Local	Local	2016	ALL
XX2016-07	Statewide		Various Trail Projects	Miscellaneous		1,250 -Total 1,000 -STBGP 250 -Local	Local	Local	2016	ALL
XX2016-08	Statewide		Various Resurf / Restore / Rehab / Recon / BR Repl / BR Rehab on County Roads	Str. & Apprs.		7,459 -Total 5,967 -STBGP 1,492 -Local	Local	State	2016	ALL

# PINE BLUFF AREA TRANSPORTATION STUDY TRANSPORTATION IMPROVEMENT PROGRAM 2016 – 2020

## STATEWIDE GENERIC PROJECTS FFY 2016

Job / Item Number	County	Route	Termini / Name	Type Work	Length	Estimated Cost (x \$1,000)	Providing Matching Funds	Carrying Out The Project	Let Year	Tip Area
XX2016-09	Statewide		Various Bridge Rehab / Replacement on County Roads	Str. & Apprs.		4,625 -Total 3,700 -STBGP BR Off 925 -Local	Local	State	2016	ALL
XX2016-10	Statewide		PE / Right-of-Way / Utilities / CENG	PE/ROW/Utility/Env		25,000 -Total 12,000 -NHPP 5,000 -STBGP 150 -Rail Hwy 600 -NFP 1,145 -HSJP 855 -Safety 250 -CMAQ Flex 5,000 -State Local	State Local	State	2016	ALL
Funding in this category may be used for the development of any project within the 2016-2020 STIP.										
XX2016-11	Statewide		Bridge Painting	Miscellaneous		3,000 -Total 2,400 -NHPP 600 -State	State	State	2016	ALL
XX2016-12	Statewide		Motor Fuel Enforcement Activities	Miscellaneous		20 -Total 20 -STBGP	State	State	2016	ALL
XX2016-13	Statewide		Various Statewide Safety Improvements	Safety & Traf. Eng.		4,000 -Total 4,000 -Safety	State	State	2016	ALL
XX2016-14	Statewide		Various Pavement Marking & Signing Projects	Safety & Traf. Eng.		4,000 -Total 3,200 -HSJP 800 -State	State	State	2016	ALL
XX2016-15	Statewide		Workforce Training and Development	Miscellaneous		700 -Total 700 -STBGP BR Off	State	State	2016	ALL



# PINE BLUFF AREA TRANSPORTATION STUDY TRANSPORTATION IMPROVEMENT PROGRAM 2016 – 2020

## STATEWIDE GENERIC PROJECTS FFY 2017

Job / Item Number	County	Route	Termini / Name	Type Work	Length	Estimated Cost (x \$1,000)	Providing Matching Funds	Carrying Out The Project	Let Year	Tip Area
XX2017-01	Statewide		IRP Debt Service	Miscellaneous		58,000 -Total 58,000 -NHPP (IRP)	State	State	2017	ALL
XX2017-02	Statewide		Various Resurf / Restoration / Rehab / Reconstruction	4-R		2,000 -Total 1,000 -NHPP 600 -STBGP 400 -State	State	State	2017	ALL
XX2017-03	Statewide		Various Bridge Rehab / Replacement	Str. & Apprs.		1,000 -Total 800 -NHPP BR 200 -State Local	State/Local	State/Local	2017	ALL
XX2017-04	Statewide		Bridge Guard Rail / Scour Control / Inspection / Inspection Equipment	Miscellaneous		5,000 -Total 3,000 -STBGP 1,000 -STBGP Br Off 1,000 -State Local	State/Local	State	2017	ALL
XX2017-05	Statewide		RR Xing Protect Devices / Surfacing / Hazard Elim	Safety & Traf. Eng.		3,900 -Total 3,510 -Rail Hwy 390 -State	State/RR	State/RR	2017	ALL
XX2017-06	Statewide		Various Transportation Alternatives Programs	Miscellaneous		8,000 -Total 6,400 -TAP 1,600 -Local	Local	Local	2017	ALL
XX2017-07	Statewide		Various Trail Projects	Miscellaneous		1,250 -Total 1,000 -STBGP 250 -Local	Local	Local	2017	ALL
XX2017-08	Statewide		Various Resurf / Restore / Rehab / Recon / BR Repl / BR Rehab on County Roads	Str. & Apprs.		7,459 -Total 5,967 -STBGP 1,492 -Local	Local	State	2017	ALL

# PINE BLUFF AREA TRANSPORTATION STUDY TRANSPORTATION IMPROVEMENT PROGRAM 2016 – 2020

## STATEWIDE GENERIC PROJECTS FFY 2017

Job / Item Number	County	Route	Termini / Name	Type Work	Length	Estimated Cost (x \$1,000)	Providing Matching Funds	Carrying Out The Project	Let Year	Tip Area
XX2017-09	Statewide		Various Bridge Rehab / Replacement on County Roads	Str. & Apprs.		4,625 -Total 3,700 -STBGP BR Off 925 -Local	Local	State	2017	ALL
XX2017-10	Statewide		PE / Right-of-Way / Utilities / CENG	PE/ROW/Utility/Env		25,000 -Total 12,000 -NHPP 5,000 -STBGP 150 -Rail Hwy 600 -NFP 1,145 -HSIP 855 -Safety 250 -CMAQ Flex 5,000 -State Local	State Local	State	2017	ALL
Funding in this category may be used for the development of any project within the 2016-2020 STIP										
XX2017-11	Statewide		Bridge Painting	Miscellaneous		3,000 -Total 2,400 -NHPP 600 -State	State	State	2017	ALL
XX2017-12	Statewide		Motor Fuel Enforcement Activities	Miscellaneous		20 -Total 20 -STBGP	State	State	2017	ALL
XX2017-13	Statewide		Various Statewide Safety Improvements	Safety & Traf. Eng.		6,600 -Total 6,600 -Safety	State	State	2017	ALL
XX2017-14	Statewide		Various Pavement Marking & Signing Projects	Safety & Traf. Eng.		4,000 -Total 3,200 -HSIP 800 -State	State	State	2017	ALL
XX2017-15	Statewide		Workforce Training and Development	Miscellaneous		700 -Total 700 -STBGP BR Off	State	State	2017	ALL



# PINE BLUFF AREA TRANSPORTATION STUDY TRANSPORTATION IMPROVEMENT PROGRAM 2016 – 2020

## STATEWIDE GENERIC PROJECTS FFY 2018

Job / Item Number	County	Route	Termini / Name	Type Work	Length	Estimated Cost (x \$1,000)	Providing Matching Funds	Carrying Out The Project	Let Year	Tip Area
XX2018-01	Statewide		IRP Debt Service	Miscellaneous		58,000 -Total 58,000 -NHPP (IRP)	State	State	2018	ALL
XX2018-02	Statewide		Various Resurf / Restoration / Rehab / Reconstruction	4-R		2,000 -Total 1,000 -NHPP 600 -STBGP 400 -State	State	State	2018	ALL
XX2018-03	Statewide		Various Bridge Rehab / Replacement	Str. & Apprs.		1,000 -Total 800 -NHPP BR 200 -State Local	State/Local	State/Local	2018	ALL
XX2018-04	Statewide		Bridge Guard Rail / Scour Control / Inspection / Inspection Equipment	Miscellaneous		5,000 -Total 3,000 -STBGP 1,000 -STBGP Br Off 1,000 -State Local	State/Local	State	2018	ALL
XX2018-05	Statewide		RR Xing Protect Devices / Surfacing / Hazard Elim	Safety & Traf. Eng.		4,000 -Total 3,600 -Rail Hwy 400 -State	State/RR	State/RR	2018	ALL
XX2018-06	Statewide		Various Transportation Alternatives Programs	Miscellaneous		8,000 -Total 6,400 -TAP 1,600 -Local	Local	Local	2018	ALL
XX2018-07	Statewide		Various Trail Projects	Miscellaneous		1,250 -Total 1,000 -STBGP 250 -Local	Local	Local	2018	ALL
XX2018-08	Statewide		Various Resurf / Restore / Rehab / Recon / BR Repl / BR Rehab on County Roads	Str. & Apprs.		7,459 -Total 5,967 -STBGP 1,492 -Local	Local	State	2018	ALL



# PINE BLUFF AREA TRANSPORTATION STUDY TRANSPORTATION IMPROVEMENT PROGRAM 2016 – 2020

## STATEWIDE GENERIC PROJECTS FFY 2018

Job / Item Number	County	Route	Termini / Name	Type Work	Length	Estimated Cost (x \$1,000)	Providing Matching Funds	Carrying Out The Project	Let Year	Tip Area
XX2018-09	Statewide		Various Bridge Rehab / Replacement on County Roads	Str. & Apprs.		4,625 -Total 3,700 -STBGP BR Off 925 -Local	Local	State	2018	ALL
XX2018-10	Statewide		PE / Right-of-Way / Utilities / CENG	PE/ROW/Utility/Env		25,000 -Total 12,000 -NHPP 5,000 -STBGP 150 -Rail Hwy 600 -NFP 1,145 -HSIP 855 -Safety 250 -CMAQ Flex 5,000 -State Local	State Local	State	2018	ALL
Funding in this category may be used for the development of any project within the 2016-2020 STIP										
XX2018-11	Statewide		Bridge Painting	Miscellaneous		3,000 -Total 2,400 -NHPP 600 -State	State	State	2018	ALL
XX2018-12	Statewide		Motor Fuel Enforcement Activities	Miscellaneous		20 -Total 20 -STBGP	State	State	2018	ALL
XX2018-13	Statewide		Various Statewide Safety Improvements	Safety & Traf. Eng.		1,200 -Total 1,200 -Safety	State	State	2018	ALL
XX2018-14	Statewide		Various Pavement Marking & Signing Projects	Safety & Traf. Eng.		4,000 -Total 3,200 -HSIP 800 -State	State	State	2018	ALL
XX2018-15	Statewide		Workforce Training and Development	Miscellaneous		700 -Total 700 -STBGP BR Off	State	State	2018	ALL

**PINE BLUFF AREA TRANSPORTATION STUDY  
TRANSPORTATION IMPROVEMENT PROGRAM 2016 – 2020**

**STATEWIDE GENERIC PROJECTS FFY 2019**

Job / Item Number	County	Route	Termini / Name	Type Work	Length	Estimated Cost (X \$1,000)	Providing Matching Funds	Carving Out The Project	Let Year	Tip Area
XX2019-01	Statewide		IRP Debt Service	Miscellaneous		58,000 -Total 58,000 -NHPP (IRP)	State	State	2019	ALL
XX2019-02	Statewide		Various Resurf / Restoration / Rehab / Reconstruction	4-R		2,000 -Total 1,000 -NHPP 600 -STBGP 400 -State	State	State	2019	ALL
XX2019-03	Statewide		Various Bridge Rehab / Replacement	Str. & Apprs.		1,000 -Total 800 -NHPP BR 200 -State Local	State/Local	State/Local	2019	ALL
XX2019-04	Statewide		Bridge Guard Rail / Scour Control / Inspection / Inspection Equipment	Miscellaneous		5,000 -Total 3,000 -STBGP 1,000 -STBGP Br Off 1,000 -State Local	State/Local	State	2019	ALL
XX2019-05	Statewide		RR Xing Protect Devices / Surfacing / Hazard Elim	Safety & Traf. Eng.		4,100 -Total 3,690 -Rail Hwy 410 -State	State/RR	State/RR	2019	ALL
XX2019-06	Statewide		Various Transportation Alternatives Programs	Miscellaneous		8,000 -Total 6,400 -TAP 1,600 -Local	Local	Local	2019	ALL
XX2019-07	Statewide		Various Trail Projects	Miscellaneous		1,250 -Total 1,000 -STBGP 250 -Local	Local	Local	2019	ALL
XX2019-08	Statewide		Various Resurf / Restore / Rehab / Recon / BR Repl / BR Rehab on County Roads	Str. & Apprs.		7,459 -Total 5,967 -STBGP 1,492 -Local	Local	State	2019	ALL



# PINE BLUFF AREA TRANSPORTATION STUDY TRANSPORTATION IMPROVEMENT PROGRAM 2016 – 2020

## STATEWIDE GENERIC PROJECTS FFY 2019

Job / Item Number	County	Route	Termini / Name	Type Work	Length	Estimated Cost (x \$1,000)	Providing Matching Funds	Carrying Out The Project	Let Year	Tip Area
XX2019-09	Statewide		Various Bridge Rehab / Replacement on County Roads	Str. & Apprs.		4,625 -Total 3,700 -STBGP BR Off 925 -Local	Local	State	2019	ALL
XX2019-10	Statewide		PE / Right-of-Way / Utilities / CENG	PE/ROW/Utility/Env		25,000 -Total 12,000 -NHPP 5,000 -STBGP 150 -Rail Hwy 600 -NFP 1,145 -HSIP 855 -Safety 250 -CMAQ Flex 5,000 -State Local	State Local	State	2019	ALL
Funding in this category may be used for the development of any project within the 2016-2020 STIP										
XX2019-11	Statewide		Bridge Painting	Miscellaneous		3,000 -Total 2,400 -NHPP 600 -State	State	State	2019	ALL
XX2019-12	Statewide		Motor Fuel Enforcement Activities	Miscellaneous		20 -Total 20 -STBGP	State	State	2019	ALL
XX2019-13	Statewide		Various Statewide Safety Improvements	Safety & Traf. Eng.		10,000 -Total 10,000 -Safety	State	State	2019	ALL
XX2019-14	Statewide		Various Pavement Marking & Signing Projects	Safety & Traf. Eng.		4,000 -Total 3,200 -HSIP 800 -State	State	State	2019	ALL
XX2019-15	Statewide		Workforce Training and Development	Miscellaneous		700 -Total 700 -STBGP BR Off	State	State	2019	ALL



# PINE BLUFF AREA TRANSPORTATION STUDY TRANSPORTATION IMPROVEMENT PROGRAM 2016 – 2020

## STATEWIDE GENERIC PROJECTS FFY 2020

Job / Item Number	County	Route	Termini / Name	Type Work	Length	Estimated Cost (x \$1,000)	Providing Matching Funds	Carrying Out The Project	Let Year	Tip Area
XX2020-01	Statewide		IRP Debt Service	Miscellaneous		58,000 -Total 58,000 -NHPP (IRP)	State	State	2020	ALL
XX2020-02	Statewide		Various Resurf / Restoration / Rehab / Reconstruction	4-R		2,000 -Total 1,000 -NHPP 600 -STBGP 400 -State	State	State	2020	ALL
XX2020-03	Statewide		Various Bridge Rehab / Replacement	Str. & Apprs.		1,000 -Total 800 -NHPP BR 200 -State Local	State/Local	State/Local	2020	ALL
XX2020-04	Statewide		Bridge Guard Rail / Scour Control / Inspection / Inspection Equipment	Miscellaneous		5,000 -Total 3,000 -STBGP 1,000 -STBGP Br Off 1,000 -State Local	State/Local	State	2020	ALL
XX2020-05	Statewide		RR Xing Protect Devices / Surfacing / Hazard Elim	Safety & Traf. Eng.		4,200 -Total 3,780 -Rail Hwy 420 -State	State/RR	State/RR	2020	ALL
XX2020-06	Statewide		Various Transportation Alternatives Programs	Miscellaneous		8,000 -Total 6,400 -TAP 1,600 -Local	Local	Local	2020	ALL
XX2020-07	Statewide		Various Trail Projects	Miscellaneous		1,250 -Total 1,000 -STBGP 250 -Local	Local	Local	2020	ALL
XX2020-08	Statewide		Various Resurf / Restore / Rehab / Recon / BR Repl / BR Rehab on County Roads	Str. & Apprs.		7,459 -Total 5,967 -STBGP 1,492 -Local	Local	State	2020	ALL

# PINE BLUFF AREA TRANSPORTATION STUDY TRANSPORTATION IMPROVEMENT PROGRAM 2016 – 2020

## STATEWIDE GENERIC PROJECTS FFY 2020

Job / Item Number	County	Route	Termini / Name	Type Work	Length	Estimated Cost (x \$1,000)	Providing Matching Funds	Carrying Out The Project	Let Year	Tip Area
XX2020-09	Statewide		Various Bridge Rehab / Replacement on County Roads	Str. & Apprs.		4,625 -Total 3,700 -STBGP BR Off 925 -Local	Local	State	2020	ALL
XX2020-10	Statewide		PE / Right-of-Way / Utilities / CENG	PE/ROW/Utility/Env		25,000 -Total 12,000 -NHPP 5,000 -STBGP 150 -Rail Hwy 600 -NFP 1,145 -HSIP 855 -Safety 250 -CMAQ Flex 5,000 -State Local	State Local	State	2020	ALL
Funding in this category may be used for the development of any project within the 2016-2020 STIP										
XX2020-11	Statewide		Bridge Painting	Miscellaneous		3,000 -Total 2,400 -NHPP 600 -State	State	State	2020	ALL
XX2020-12	Statewide		Motor Fuel Enforcement Activities	Miscellaneous		20 -Total 20 -STBGP	State	State	2020	ALL
XX2020-13	Statewide		Various Statewide Safety Improvements	Safety & Traf. Eng.		10,000 -Total 10,000 -Safety	State	State	2020	ALL
XX2020-14	Statewide		Various Pavement Marking & Signing Projects	Safety & Traf. Eng.		4,000 -Total 3,200 -HSIP 800 -State	State	State	2020	ALL
XX2020-15	Statewide		Workforce Training and Development	Miscellaneous		700 -Total 700 -STBGP BR Off 206 -Total 110 -NHPP	State	State	2020	ALL
XX2020-16	Statewide		Various Pavement Projects	Miscellaneous		55 -STBGP 41 -State	State	State	2020	ALL

**PINE BLUFF AREA TRANSPORTATION STUDY  
TRANSPORTATION IMPROVEMENT PROGRAM**

**FY 2016 – 2020**

**TRANSIT PROJECTS**



**GLOSSARY OF TERMS / ABBREVIATIONS / ACRONYMS**

<b>FTA</b>	Federal Transit Administration Funds	<b>NARTS</b>	Northwest Arkansas Regional Transportation Study
<b>BI-STATE</b>	Bi-State Transportation Study	<b>PBATS</b>	Pine Bluff Area Transportation Study
<b>HSA</b>	Hot Springs Area Metropolitan Planning Organization	<b>PBT</b>	Pine Bluff Transit
<b>JATS</b>	Jonesboro Area Transportation Study	<b>TUTS</b>	Texarkana Urban Transportation Study

**PINE BLUFF AREA TRANSPORTATION STUDY  
TRANSPORTATION IMPROVEMENT PROGRAM 2016 – 2020**

TRANSIT PROJECTS FFY 2016

Job / Item Number	County	Route	Termini / Name	Type Work	Estimated Cost (x \$1,000)	Providing Matching Funds	Carrying Out The Project	Let Year	Tip Area
110FTA	Statewide		Seniors and Individuals with Disabilities	Transit	3,181 -Total 2,545 -FTA 5310 636 -Local	Local	Local	2016	ALL
111FTA	Statewide		Rural Area	Transit	15,487 -Total 12,390 -FTA 5311 3,097 -Local	Local	Local	2016	ALL
113FTA	Statewide		Bus and Bus Facilities < 200,000	Transit	616 -Total 493 -FTA 5339 123 -Local	Local	Local	2016	ALL
114FTA	Statewide		Bus and Bus Facilities – Rural Areas	Transit	2,188 -Total 1,750 -FTA 5339 438 -Local	Local	Local	2016	ALL
115FTA	Statewide		Safety Oversight	Transit	286 -Total 229 -FTA 5329 57 -Local	Local	Local	2016	ALL
116FTA	Statewide		Statewide Planning Program	Transit	140 -Total 112 -FTA 5304 28 -Local	Local	Local	2016	ALL
200PTF	Statewide		Public Transit Trust Fund	Transit	4,000 -Total 4,000 -State	Local	Local	2016	ALL
201TLS	Statewide		Translease	Transit	775 -Total 775 -Local	Local	Local	2016	ALL
202HUA	Statewide		HUA	Transit	346 -Total 346 -State	Local	Local	2016	ALL
PBT001	Jefferson		Operating Assistance	Transit	672 -Total 336 -FTA 5307 336 -Local	Local	Local	2016	PBATS
PBT002	Jefferson		Capital - Preventive Maintenance	Transit	306 -Total 245 -FTA 61 -Local	Local	Local	2016	PBATS
PBT003	Jefferson		Capital - Paratransit Service	Transit	90 -Total 72 -FTA 5307 18 -Local	Local	Local	2016	PBATS
PBT004	Jefferson		Capital - Rolling Stock/Support Equipment	Transit	63 -Total 50 -FTA 5307 13 -Local	Local	Local	2016	PBATS
PBT005	Jefferson		Capital - Planning	Transit	18 -Total 14 -FTA 5307 4 -Local	Local	Local	2016	PBATS
PBT006	Jefferson		Consolidated Planning Program (MPO)	Transit	118 -Total 94 -FTA 5305 24 -Local	Local	Local	2016	PBATS

**PINE BLUFF AREA TRANSPORTATION STUDY  
TRANSPORTATION IMPROVEMENT PROGRAM 2016 – 2020**

TRANSIT PROJECTS FFY 2017

Job / Item Number	County	Route	Termini / Name	Type Work	Estimated Cost (x \$1,000)	Providing Matching Funds	Carrying Out The Project	Let Year	Tip Area
110FTA	Statewide		Seniors and Individuals with Disabilities	Transit	3,245 -Total 2,596 -FTA 5310 649 -Local	Local	Local	2017	ALL
111FTA	Statewide	Rural Area		Transit	15,796 -Total 12,637 -FTA 5311 3,159 -Local	Local	Local	2017	ALL
113FTA	Statewide		Bus and Bus Facilities < 200,000	Transit	629 -Total 503 -FTA 5339 126 -Local	Local	Local	2017	ALL
114FTA	Statewide		Bus and Bus Facilities - Rural Areas	Transit	2,188 -Total 1,750 -FTA 5339 438 -Local	Local	Local	2017	ALL
115FTA	Statewide		Safety Oversight	Transit	291 -Total 233 -FTA 5329 58 -Local	Local	Local	2017	ALL
116FTA	Statewide		Statewide Planning Program	Transit	144 -Total 115 -FTA 5304 29 -Local	Local	Local	2017	ALL
200PTF	Statewide		Public Transit Trust Fund	Transit	4,000 -Total 4,000 -State	Local	Local	2017	ALL
201TLS	Statewide		Transit/Lease	Transit	775 -Total 775 -Local	Local	Local	2017	ALL
202HUA	Statewide	HUA		Transit	346 -Total 346 -State	Local	Local	2017	ALL
PBT001	Jefferson		Operating Assistance	Transit	694 -Total 347 -FTA 5307 337 -Local	Local	Local	2017	PBATS
PBT002	Jefferson		Capital - Preventive Maintenance	Transit	308 -Total 247 -FTA 61 -Local	Local	Local	2017	PBATS
PBT003	Jefferson		Capital - Paratransit Service	Transit	91 -Total 73 -FTA 5307 18 -Local	Local	Local	2017	PBATS
PBT004	Jefferson		Capital - Rolling Stock/Support Equipment	Transit	63 -Total 50 -FTA 5307 13 -Local	Local	Local	2017	PBATS
PBT005	Jefferson		Capital - Planning	Transit	18 -Total 14 -FTA 5307 4 -Local	Local	Local	2017	PBATS
PBT006	Jefferson		Consolidated Planning Program (MPO)	Transit	120 -Total 96 -FTA 5305 24 -Local	Local	Local	2017	PBATS



**PINE BLUFF AREA TRANSPORTATION STUDY  
TRANSPORTATION IMPROVEMENT PROGRAM 2016 – 2020**

**TRANSIT PROJECTS FFY 2018**

Job / Item Number	County	Route	Termini / Name	Type Work	Estimated Cost (\$,1,000)	Providing Matching Funds	Carrying Out The Project	Let Year	Tip Area
110FTA	Statewide		Seniors and Individuals with Disabilities	Transit	3,310 -Total 2,648 -FTA 5310 662 -Local	Local	Local	2018	ALL
111FTA	Statewide	Rural Area		Transit	16,113 -Total 12,890 -FTA 5311 3,223 -Local	Local	Local	2018	ALL
113FTA	Statewide		Bus and Bus Facilities < 200,000	Transit	641 -Total 513 -FTA 5339 128 -Local	Local	Local	2018	ALL
114FTA	Statewide		Bus and Bus Facilities – Rural Areas	Transit	2,188 -Total 1,750 -FTA 5339 438 -Local	Local	Local	2018	ALL
115FTA	Statewide		Safety Oversight	Transit	298 -Total 238 -FTA 5329 60 -Local	Local	Local	2018	ALL
116FTA	Statewide		Statewide Planning Program	Transit	146 -Total 117 -FTA 5304 29 -Local	Local	Local	2018	ALL
200PTF	Statewide		Public Transit Trust Fund	Transit	4,000 -Total 4,000 -State	Local	Local	2018	ALL
201TLS	Statewide		Translease	Transit	775 -Total 775 -Local	Local	Local	2018	ALL
202HUA	Statewide	HUA		Transit	346 -Total 346 -State	Local	Local	2018	ALL
PBT001	Jefferson		Operating Assistance	Transit	720 -Total 360 -FTA 5307 360 -Local	Local	Local	2018	PBATS
PBT002	Jefferson		Capital - Preventive Maintenance	Transit	310 -Total 248 -FTA 62 -Local	Local	Local	2018	PBATS
PBT003	Jefferson		Capital - Paratransit Service	Transit	91 -Total 73 -FTA 5307 18 -Local	Local	Local	2018	PBATS
PBT004	Jefferson		Capital - Rolling Stock/Support Equipment	Transit	64 -Total 51 -FTA 5307 13 -Local	Local	Local	2018	PBATS
PBT005	Jefferson		Capital - Planning	Transit	18 -Total 14 -FTA 5307 4 -Local	Local	Local	2018	PBATS
PBT006	Jefferson		Consolidated Planning Program (MPO)	Transit	123 -Total 98 -FTA 5305 25 -Local	Local	Local	2018	PBATS

**PINE BLUFF AREA TRANSPORTATION STUDY  
TRANSPORTATION IMPROVEMENT PROGRAM 2016 – 2020**

**TRANSIT PROJECTS FFY 2019**

Job / Item Number	County	Route	Termini / Name	Type Work	Estimated Cost (x \$1,000)	Providing Matching Funds	Carrying Out The Project	Let Year	Tip Area
110FTA	Statewide		Seniors and Individuals with Disabilities	Transit	3,376 -Total 2,701 -FTA 5310 675 -Local	Local	Local	2019	ALL
111FTA	Statewide		Rural Area	Transit	16,435 -Total 13,148 -FTA 5311 3,287 -Local	Local	Local	2019	ALL
113FTA	Statewide		Bus and Bus Facilities < 200,000	Transit	654 -Total 523 -FTA 5339 131 -Local	Local	Local	2019	ALL
114FTA	Statewide		Bus and Bus Facilities – Rural Areas	Transit	2,188 -Total 1,750 -FTA 5339 438 -Local	Local	Local	2019	ALL
115FTA	Statewide		Safety Oversight	Transit	304 -Total 243 -FTA 5329 61 -Local	Local	Local	2019	ALL
116FTA	Statewide		Statewide Planning Program	Transit	149 -Total 119 -FTA 5304 30 -Local	Local	Local	2019	ALL
200PTF	Statewide		Public Transit Trust Fund	Transit	4,000 -Total 4,000 -State	Local	Local	2019	ALL
201TLS	Statewide		Transit	Transit	775 -Total 775 -Local	Local	Local	2019	ALL
202HUA	Statewide		HUA	Transit	346 -Total 346 -State	Local	Local	2019	ALL
PBT001	Jefferson		Operating Assistance	Transit	748 -Total 374 -FTA 5307 374 -Local	Local	Local	2019	PBATS
PBT002	Jefferson		Capital - Preventive Maintenance	Transit	311 -Total 249 -FTA 62 -Local	Local	Local	2019	PBATS
PBT003	Jefferson		Capital - Paratransit Service	Transit	92 -Total 73 -FTA 5307 19 -Local	Local	Local	2019	PBATS
PBT004	Jefferson		Capital - Rolling Stock/Support Equipment	Transit	64 -Total 51 -FTA 5307 13 -Local	Local	Local	2019	PBATS
PBT005	Jefferson		Capital - Planning	Transit	18 -Total 14 -FTA 5307 4 -Local	Local	Local	2019	PBATS
PBT006	Jefferson		Consolidated Planning Program (MPO)	Transit	125 -Total 100 -FTA 5305 25 -Local	Local	Local	2019	PBATS



**PINE BLUFF AREA TRANSPORTATION STUDY  
TRANSPORTATION IMPROVEMENT PROGRAM 2016 – 2020**

TRANSIT PROJECTS FFY 2020

Job / Item Number	County	Route	Termini / Name	Type Work	Estimated Cost (x \$1,000)	Providing Matching Funds	Carrying Out The Project	Let Year	Tip Area
110FTA	Statewide		Seniors and Individuals with Disabilities	Transit	3,444 -Total 2,755 -FTA 5310 689 -Local	Local	Local	2020	ALL
111FTA	Statewide		Rural Area	Transit	16,764 -Total 13,411 -FTA 5311 3,353 -Local	Local	Local	2020	ALL
113FTA	Statewide		Bus and Bus Facilities < 200,000	Transit	667 -Total 534 -FTA 5339 133 -Local	Local	Local	2020	ALL
114FTA	Statewide		Bus and Bus Facilities – Rural Areas	Transit	2,188 -Total 1,750 -FTA 5339 438 -Local	Local	Local	2020	ALL
115FTA	Statewide		Safety Oversight	Transit	310 -Total 248 -FTA 5329 62 -Local	Local	Local	2020	ALL
116FTA	Statewide		Statewide Planning Program	Transit	153 -Total 122 -FTA 5304 31 -Local	Local	Local	2020	ALL
200PTF	Statewide		Public Transit Trust Fund	Transit	4,000 -Total 4,000 -State	Local	Local	2020	ALL
201TLS	Statewide		Translease	Transit	775 -Total 775 -Local	Local	Local	2020	ALL
202HUA	Statewide		HUA	Transit	346 -Total 346 -State	Local	Local	2020	ALL
PBT001	Jefferson		Operating Assistance	Transit	774 -Total 387 -FTA 5307 387 -Local	Local	Local	2020	PBATS
PBT002	Jefferson		Capital - Preventive Maintenance	Transit	312 -Total 250 -FTA 62 -Local	Local	Local	2020	PBATS
PBT003	Jefferson		Capital - Paratransit Service	Transit	92 -Total 74 -FTA 5307 18 -Local	Local	Local	2020	PBATS
PBT004	Jefferson		Capital - Rolling Stock/Support Equipment	Transit	65 -Total 52 -FTA 5307 13 -Local	Local	Local	2020	PBATS
PBT005	Jefferson		Capital - Planning	Transit	18 -Total 14 -FTA 5307 4 -Local	Local	Local	2020	PBATS
PBT006	Jefferson		Consolidated Planning Program (MPO)	Transit	128 -Total 102 -FTA 5305 26 -Local	Local	Local	2020	PBATS



**STATEWIDE  
AND LOCAL  
FINANCIAL  
SUMMARIES**

**PINE BLUFF AREA TRANSPORTATION STUDY**  
**FY 2016 – 2020 TRANSPORTATION IMPROVEMENT PROGRAM**  
**STATEWIDE FINANCIAL SUMMARY**  
(in Thousands \$)

**STATEWIDE HIGHWAY AND ROAD PROJECTS (Includes Generic and Local Projects)**

FUNDING CATEGORY	FY 2016	FY 2017	FY 2018	FY 2019	FY2020
NHPP	292.9	313.3	297.7	314.9	281.5
IRB (2011 Bond)	78.9	0	0	0	0
Connecting Ark Prog	167.0	789.3	135.8	52.9	156.9
STB-GP	131.0	185.3	154.5	139.5	172.1
Highway Safety	30.4	29.3	32.4	29.2	28.8
Rail Highway Crossing	3.6	3.7	3.8	3.8	3.9
CMAQ	11.5	14.1	10.4	13.1	14.2
National Hwy Freight	15.9	15.6	15.8	17.9	14.0
Recreational Trails	1.0	1.0	1.0	1.0	1.0
Transp. Alter. Prog. TAP	7.7	7.7	7.7	7.7	7.8
Earmarked Funds	61.6	26.9	0	0.3	14.0
<b>Subtotal</b>	<b>801.4</b>	<b>1,386.1</b>	<b>659.1</b>	<b>580.5</b>	<b>694.3</b>
State Match	98.8	101.5	95.4	90.4	93.6
IRP Debt Service	16.5	16.5	16.5	16.5	16.5
Local Match	51.3	31.2	17.5	12.3	36.8
<b>GRAND TOTAL</b>	<b>967.9</b>	<b>1,535.2</b>	<b>788.5</b>	<b>699.7</b>	<b>841.2</b>

**STATEWIDE TRANSIT PROJECTS (Includes Generic and Local Projects)**

FUNDING CATEGORY	FY 2016	FY 2017	FY 2018	FY 2019	FY 2020
FTA – 5304	112	115	117	119	122
FTA – 5305	2,054	2,093	2,137	2,179	2,223
FTA – 5307	12,829	13,085	13,348	13,613	13,886
FTA – 5310	2,545	2,596	2,648	2,701	2,755
FTA – 5311	12,390	12,637	12,890	13,148	13,411
FTA – 5329	229	233	238	243	248
FTA – 5337	317	323	330	336	343
FTA – 5339	2,916	2,939	2,963	2,987	3,012
<b>Subtotal</b>	<b>33,392</b>	<b>34,021</b>	<b>34,671</b>	<b>35,326</b>	<b>36,000</b>
State Funds	4,346	4,346	4,346	4,346	4,346
Local Match	26,105	27,746	27,411	28,078	28,339
<b>GRAND TOTAL</b>	<b>63,843</b>	<b>65,113</b>	<b>66,428</b>	<b>67,750</b>	<b>68,685</b>

The funding shown in the Statewide Financial Summary table on the previous page includes projects to be funded throughout the State of Arkansas, not just in the PBATS area. Funds listed in these categories will be spread out over the State and/or in MPO TIP areas. Local projects that have been assigned job numbers and other local projects where it is known that funds will be requested are included in this total.

The table below shows the funding summary for only known local projects. These projects have been listed separately in the TIP project spreadsheets on pages 6, 21, 22, 23, 24, and 25 and are identified as being located in Jefferson County and in the PBATS TIP area. Other local projects for which funding may be requested in the future are contained within the Statewide project categories of the spreadsheets. One of the reasons that this is done is because some of the funds in certain programs must be requested or applied for by local jurisdictions annually, and including these funds as statewide in local TIPs prevents recurrent amendments.

## PBATS AREA FINANCIAL SUMMARY

(in Thousands \$)

### LOCAL HIGHWAY AND ROAD PROJECTS (For which funding is known)

FUNDING CATEGORY	FY 2016	FY 2017	FY 2018	FY 2019	FY 2020
IRB	23,000	-	-	-	-
NHPP IRP	-	14,500	-	*	-
NHPP	-	2,400	8,560	21,600	4,000
NFP	-	12,500	-	-	-
STB-GP	-	-	7,280	4,160	1,200
NHPP-BR	-	-	640	-	-
State	-	3,600	4,120	6,440	1,300
<b>GRAND TOTAL</b>	<b>23,000</b>	<b>33,000</b>	<b>20,600</b>	<b>32,200</b>	<b>6,500</b>

### LOCAL URBAN TRANSIT PROJECTS (For which funding is known)

FUNDING CATEGORY	FY 2016	FY 2017	FY 2018	FY 2019	FY 2020
FTA – 5307 OA	336	347	360	374	387
FTA – 5307 PM	245	247	248	249	250
FTA – 5307 ADA	72	73	73	73	74
FTA – 5307 C-RS	50	50	51	51	52
FTA – 5307 C-P	14	14	14	14	14
FTA - 5305 CPP	94	96	98	100	102
LOCAL	456	467	482	497	510
<b>GRAND TOTAL</b>	<b>1,267</b>	<b>1,294</b>	<b>1,326</b>	<b>1,357</b>	<b>1,389</b>

OA: Operating Assistance    PM: Capital - Preventive Maintenance    ADA: Capital - Paratransit Service    C-P: Capital - Planning  
 C-RS: Capital Rolling Stock    CPP: Consolidated Planning Program



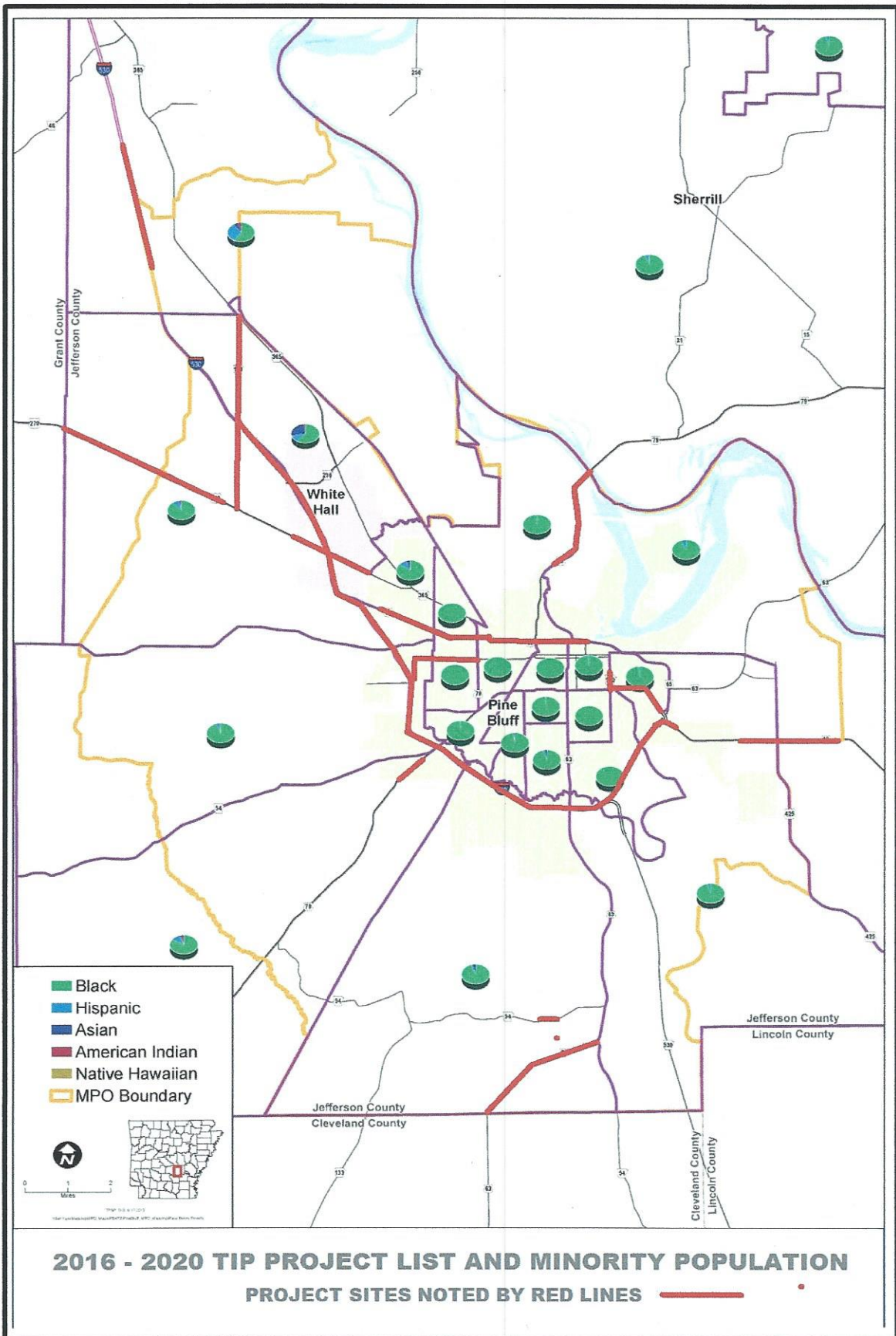
## ENVIRONMENTAL JUSTICE

Environmental Justice is a process that ensures that the minority and low-income populations are not excluded from policy-setting or decision making processes with regards to transportation and are also not negatively impacted by environmental burdens.

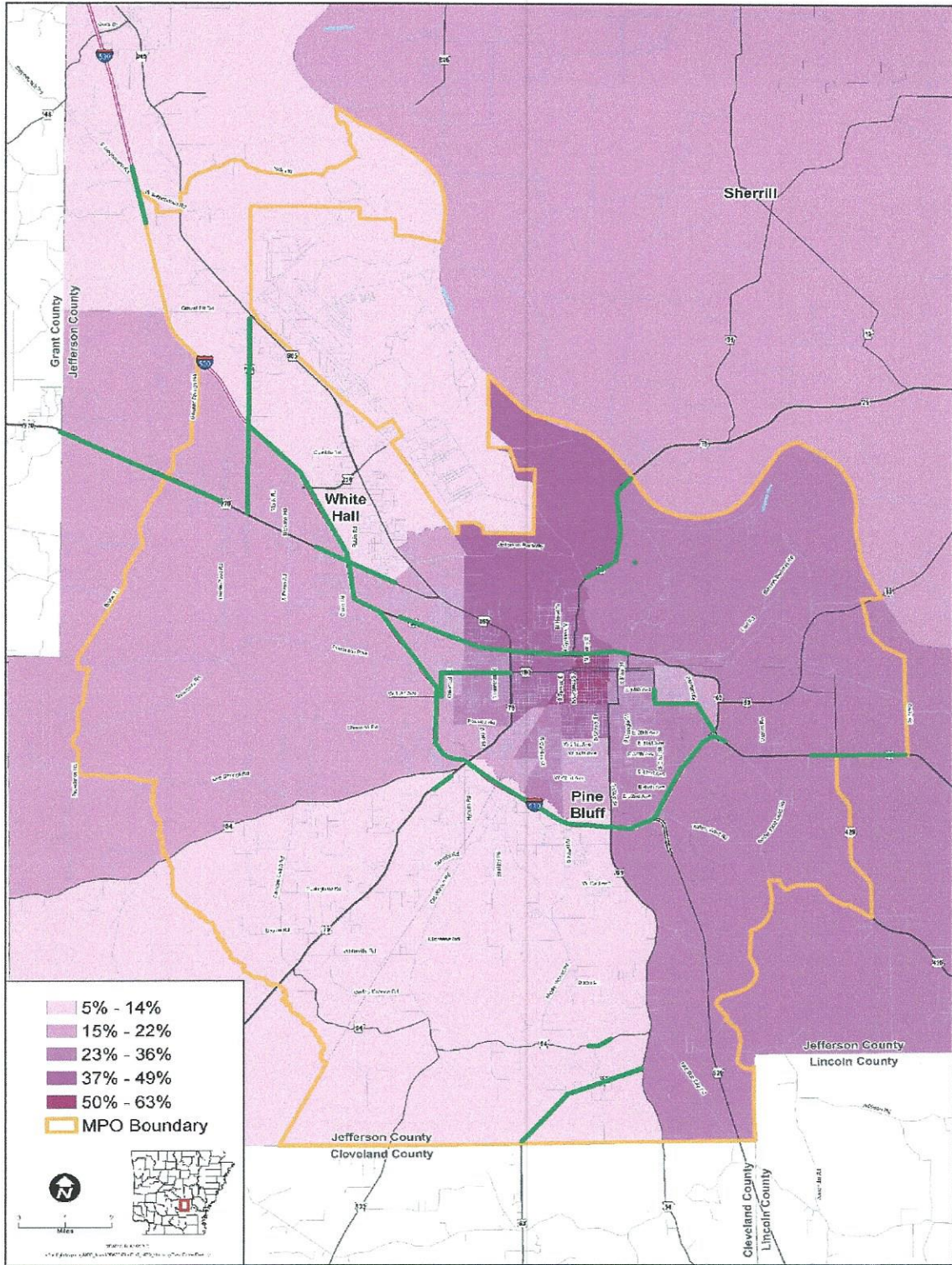
The framework for the approach to environmental justice is found in Title VI of the 1964 Civil Rights Act. The Executive Order 12898, 'Federal Actions to Address Environmental Justice in Minority Populations and Low-Income Populations' was signed on February 11, 1994. The Presidential memorandum accompanying EO 12898 identified Title VI of the Civil Rights Act of 1964 as one of several federal laws that should be applied 'to prevent minority communities and low-income communities from being subject to disproportionately high and adverse environmental effects.' According to the U.S. Department of Justice, '...the core tenet of environmental justice – that development and urban renewal benefitting a community as a whole not be unjustifiably purchased through the disproportionate allocation of its adverse environmental and health burdens on the community's minority – flows directly from the underlying principle of Title VI itself'.

The TIP follows the 2040 MTP Constrained List which follows the Federal Highway Administration guidance with regard to the compliance with the intent of the environmental justice provisions.

The Environmental Justice maps on the following pages illustrate the locations of the FY 2016 -2020 TIP projects in relation to minority population and low income population distributions in the MPA.







**FY 2016 - 2020 TIP PROJECTS MAP AND POPULATION BELOW POVERTY**

**PROJECT SITES NOTED BY GREEN LINES** ———



**CERTIFICATIONS  
AND  
ADOPTION**

## SELF -CERTIFICATIONS

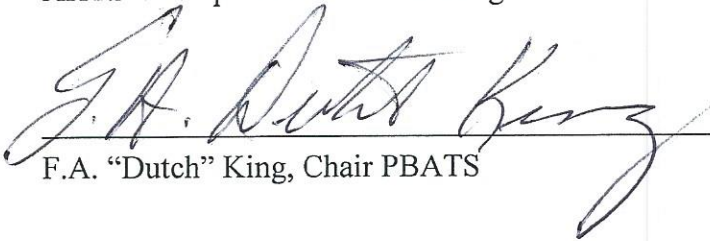
The Arkansas State Highway and Transportation Department and the Pine Bluff Area Transportation Study for the Pine Bluff Metropolitan Area certify that the Transportation Planning Process is being carried out in accordance with all applicable requirements of:

- (1) 23 U.S.C. 134 and 135, 49 U.S.C. 5303 and 5304, and this part;
- (2) Title VI of the Civil Rights Act of 1964, as amended (42 U.S.C. 2000d-1) and 49 CFR part 21;
- (3) 49 U.S.C. 5332, prohibiting discrimination on the basis of race, color, creed, national origin, sex, or age in employment or business opportunity;
- (4) Section 1101(b) of the SAFETEA-LU (Pub. L. 109-59) and 49 CFR part 26 regarding the involvement of disadvantaged business enterprises in USDOT funded projects;
- (5) 23 CFR part 230, regarding implementation of an equal employment opportunity program on Federal and Federal aid highway construction contracts;
- (6) The provisions of the Americans with Disabilities Act of 1990 (42 U.S.C. 12101 et seq.) and 49 CFR parts 27, 37 and 38;
- (7) In States containing nonattainment and maintenance areas, sections 174 and 176 (c) and (d) of the Clean Air Act, as amended (42 U.S.C. 7504, 7506 (c) and (d)) and 40 CFR part 93;
- (8) The Older Americans Act, as amended (42 U.S.C. 6101), prohibiting discrimination on the basis of age in programs or activities receiving Federal financial assistance;
- (9) Section 324 of title 23 U.S.C, regarding the prohibition of discrimination based on gender; and
- (10) Section 504 of the Rehabilitation Act of 1973 (29 U.S.C. 794) and 49 CFR part 27 regarding discrimination against individuals with disabilities.



Jesse Jones, Division Engineer  
AHTD Transportation and Planning

Date: 5/12/16



F.A. "Dutch" King, Chair PBATS

Date: 5-4-16

**A RESOLUTION ADOPTING  
THE FY 2016 - 2020 TRANSPORTATION IMPROVEMENT PROGRAM  
FOR THE  
PINE BLUFF AREA TRANSPORTATION STUDY  
METROPOLITAN AREA**

WHEREAS, the U.S. Department of Transportation requires development of a five year Transportation Improvement Program (TIP) for each urbanized area under the direction of a Metropolitan Planning Organization; and

WHEREAS, local transportation projects utilizing Federal Highway Administration fund must be included in the TIP; and

WHEREAS, local transit projects utilizing Federal Transit Administration funds must also be listed in the TIP; and

WHEREAS, the Pine Bluff Area Transportation Study (PBATS) Policy Committee is designated as the policy body responsible for performing the transportation planning; and

WHEREAS, the PBATS complied with its public involvement policy to solicit public and private sector involvement in review and attend meetings to discuss the draft TIP; and

WHEREAS, the PBATS Policy Committee self-certifies that the Planning Process is consistent with 23 CFR part 450.334; and other Federal requirements; and

NOW, THEREFORE BE IT RESOLVED, that the PBATS Policy Committee adopts the FY 2016 - 2020 TIP.

PASSED AND APPROVED THIS 5th DAY OF May, 2016.



F.A. "Dutch" King, Chair PBATS



## PBATS 2016 - 2020 TIP ADOPTION

This Transportation Improvement Program for Fiscal Years 2016 - 2020 was prepared as part of the Pine Bluff Area Transportation Study and approved by the Technical Committee and Policy Committee with the assistance of the Southeast Arkansas Regional Planning Commission. The TIP was placed on the SARPC website and Public Notice concerning this program was published in the Pine Bluff Commercial newspaper. No comments were received from the general public. The PBATS Policy Committee reviewed and approved the TIP on May 5th, 2016

I hereby certify the adoption of the Transportation Improvement Program for the Federal Fiscal Years 2016 - 2020 by the Pine Bluff Area Transportation Study Policy Committee on the 5th day of May, 2016



\_\_\_\_\_  
Larry Reynolds, Study Director

## Public Comments Received

As required by federal regulations and as part of the PBATS Public Participation Process notice was made requesting input from the public on the proposed 2016-2020 Transportation Improvement Plan. Following is a synopsis of the comments received.

1. The Highway 270 project (local project 02X016) shows the "Let" year as 2019. That's too long away. This project has been in the plan since 2010 or before. Don't they know how much traffic demand has increased out there and the condition of 270 east of I-530 is pathetic. (Foster)
2. We are so glad that our project (local project 02X018 Franklin and 6th) is getting some attention. We have worked hard on getting this area and road improved. It's a safety hazard out here. (Mr. & Mrs. Mays)